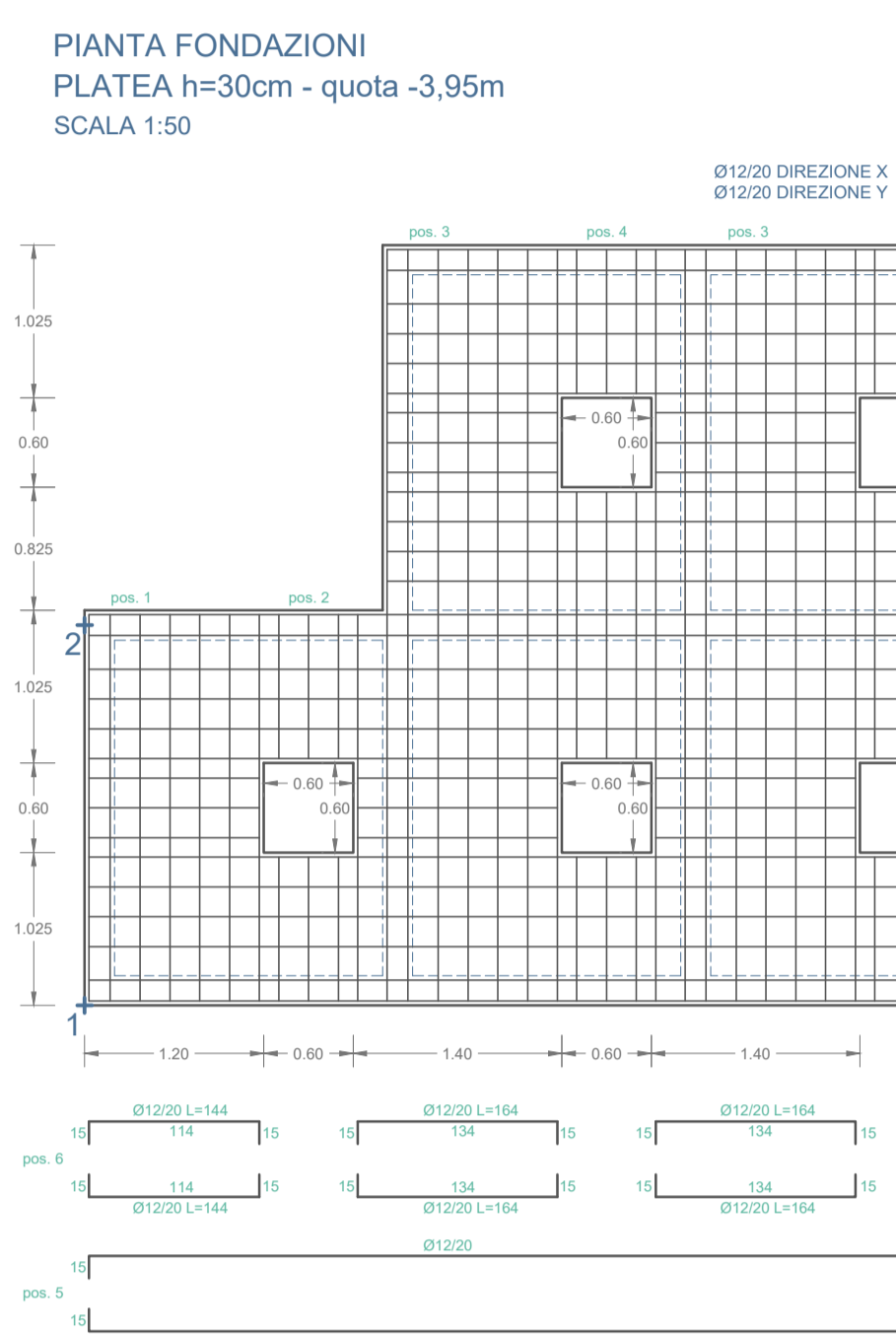
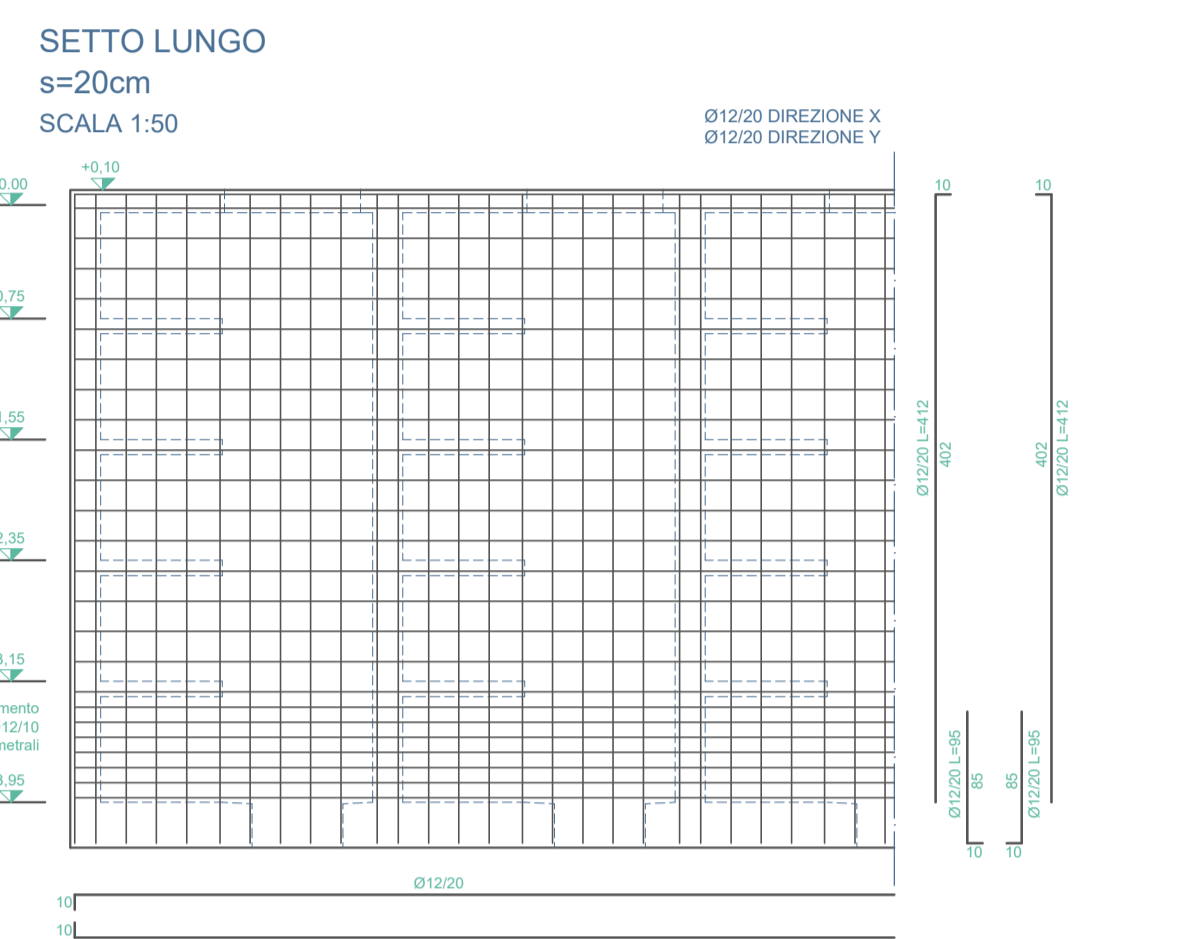
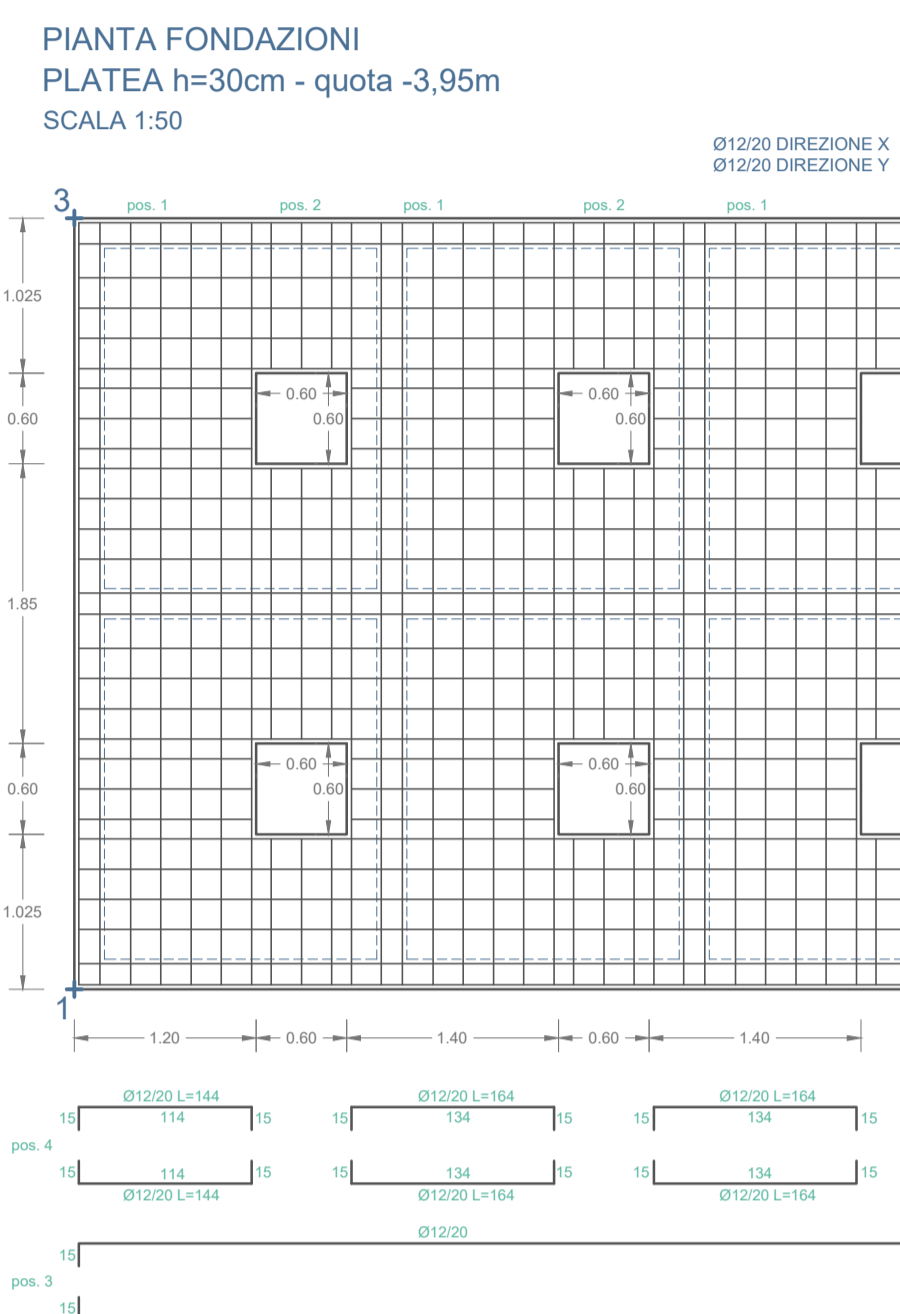
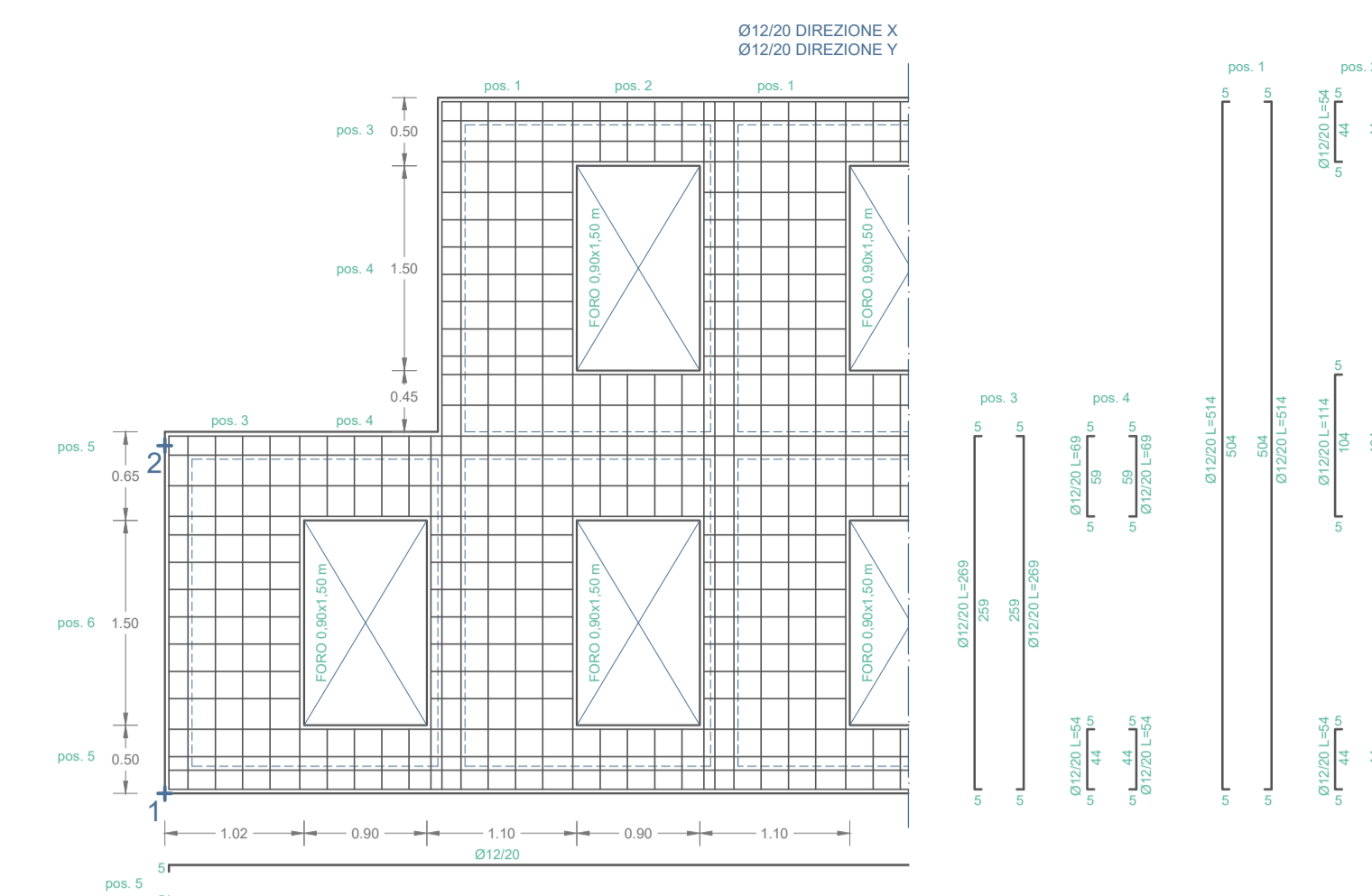
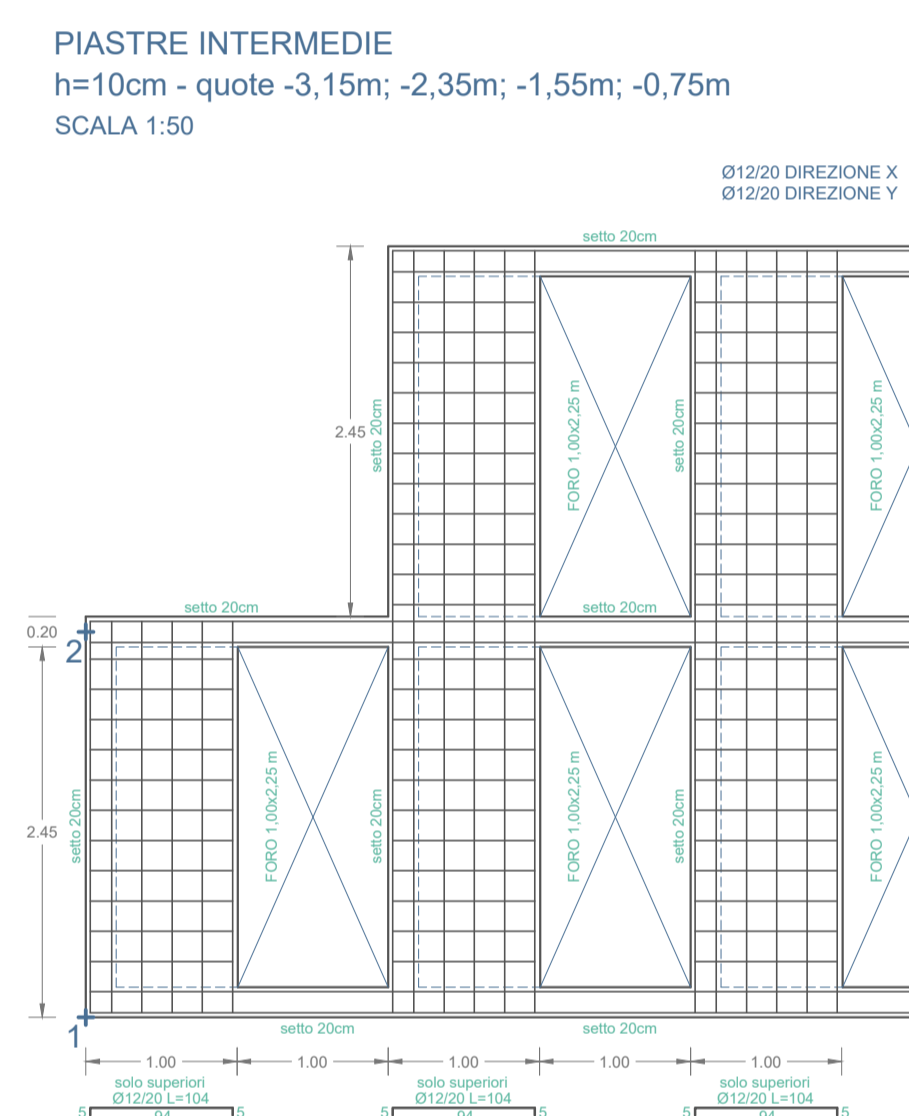
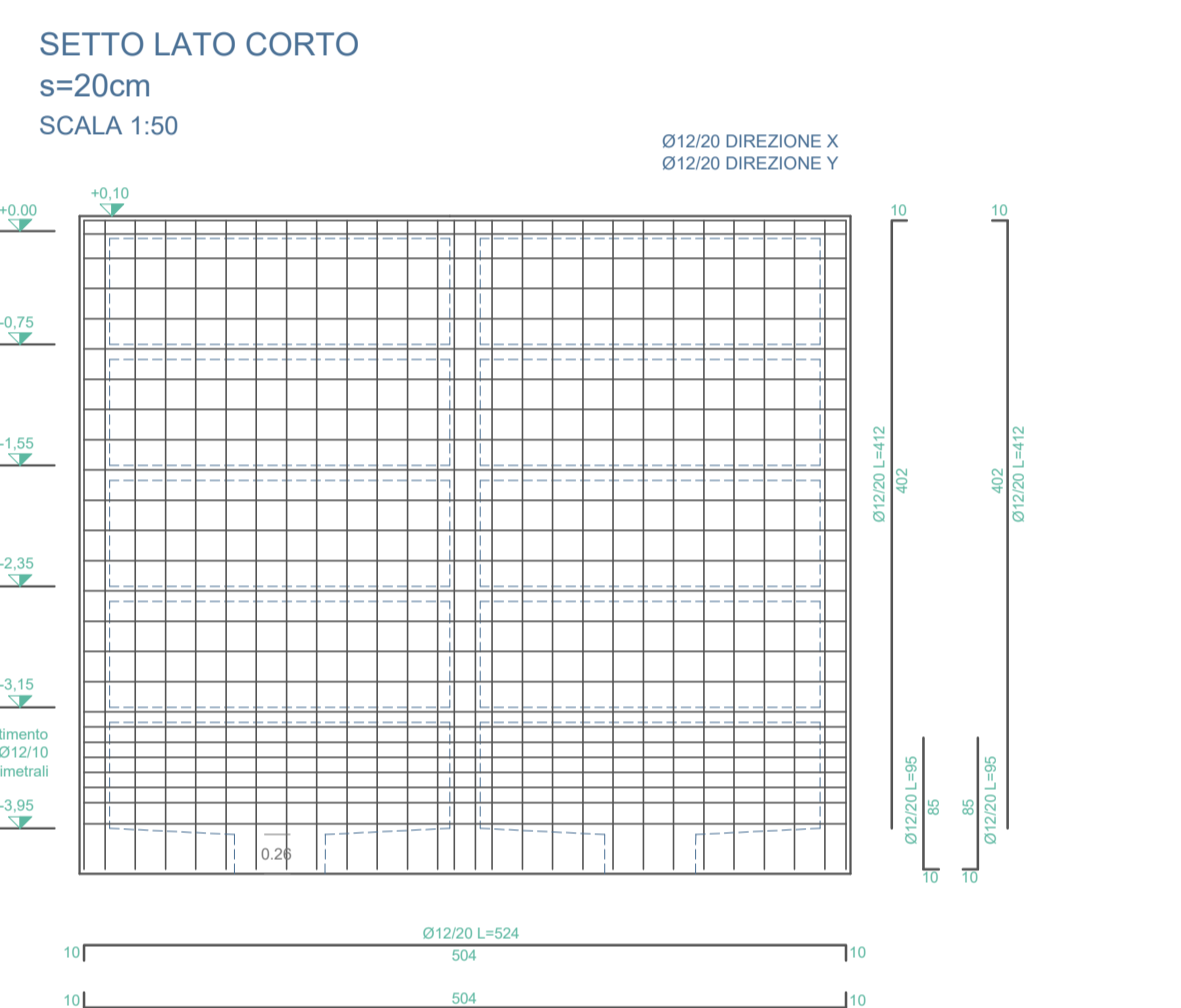
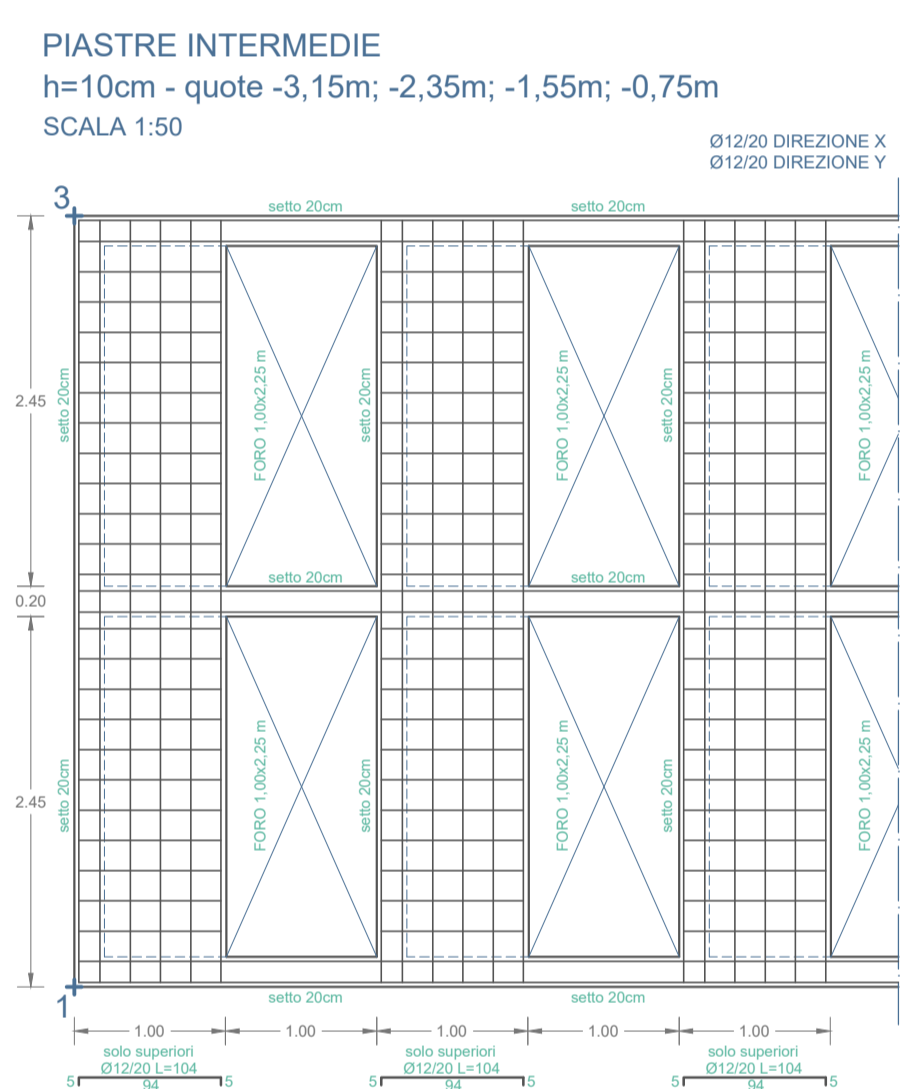
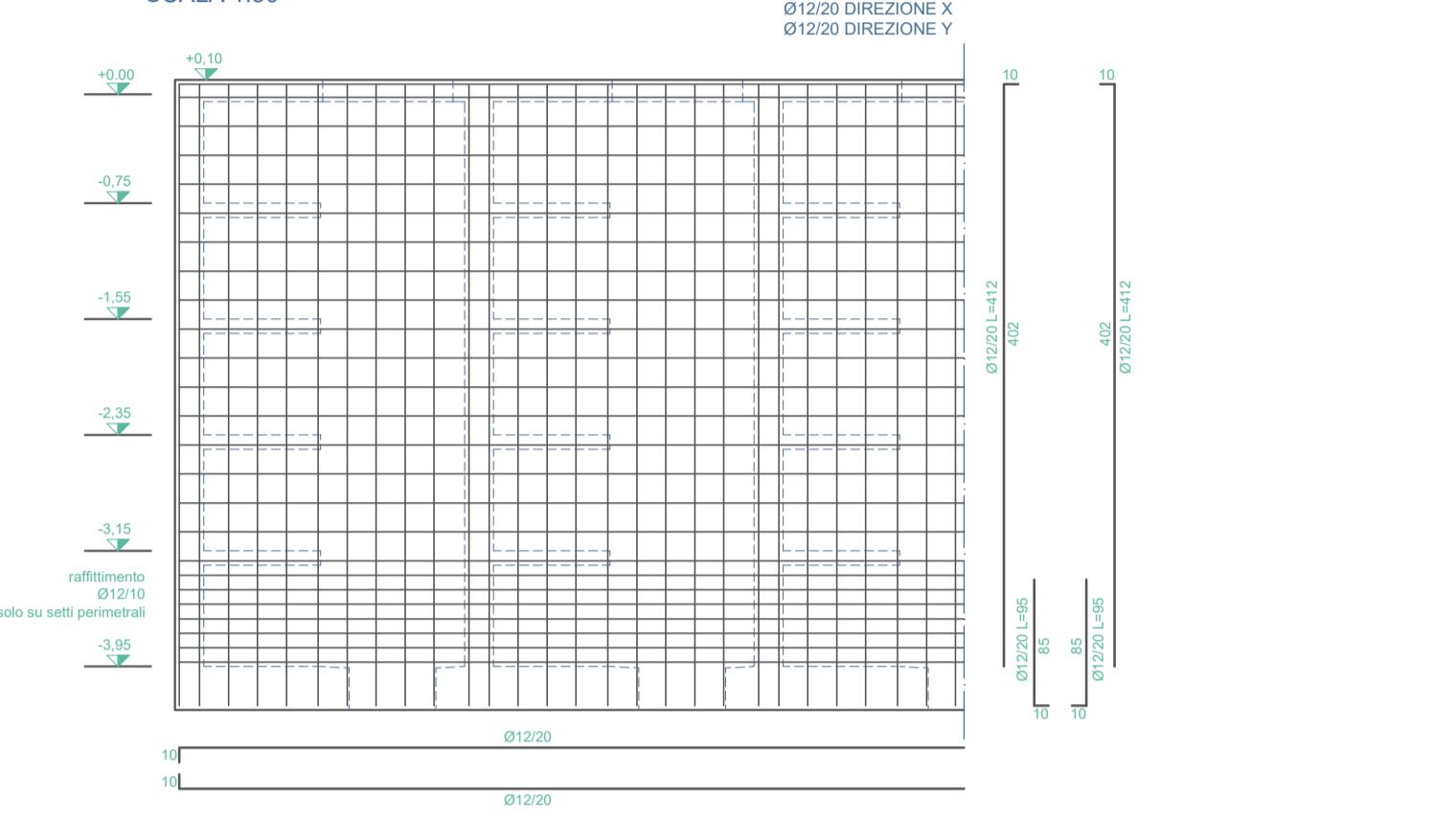


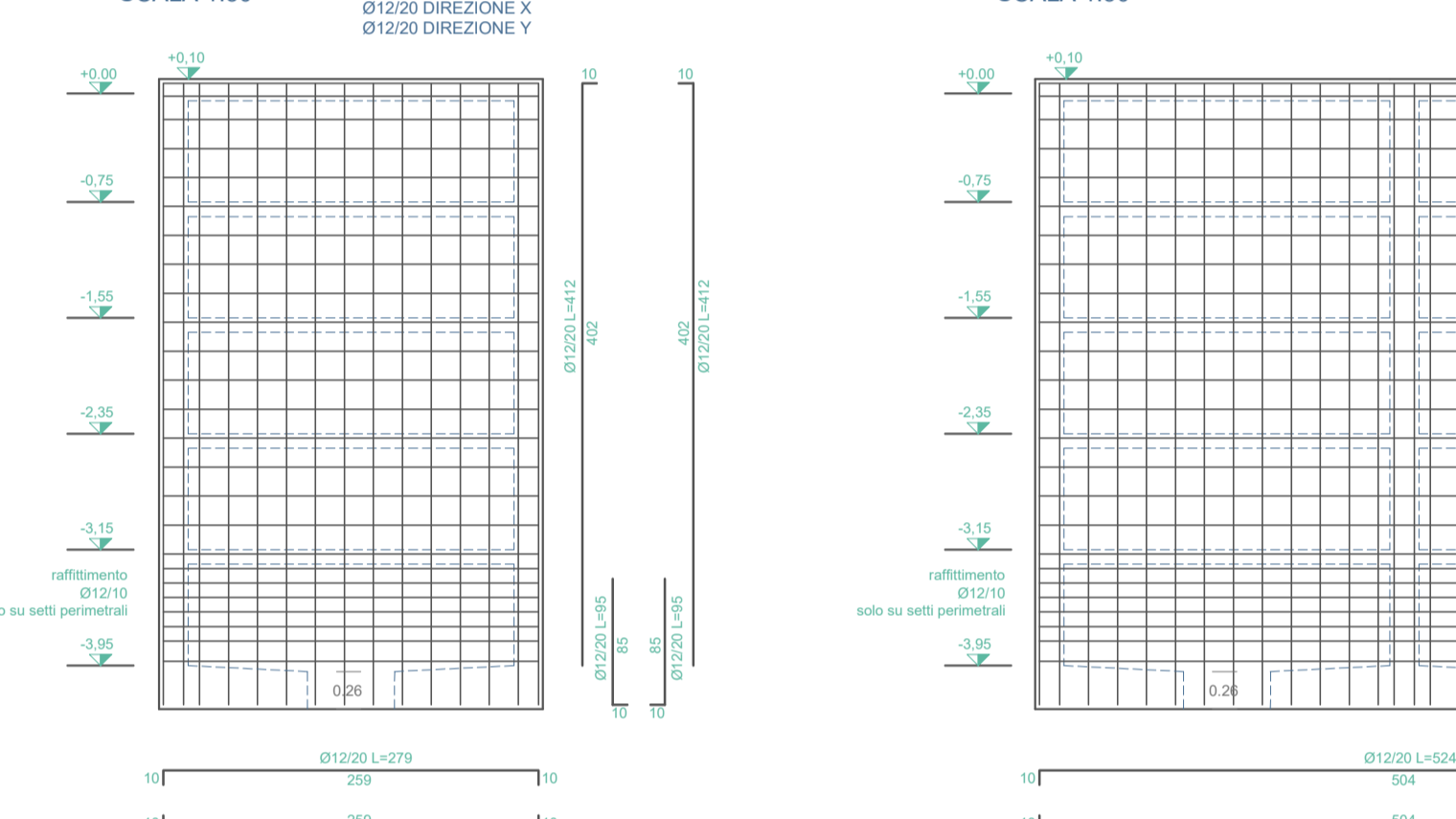
PIASTRA COPERTURA
h=15cm - quota +0,10m
SCALA 1:50



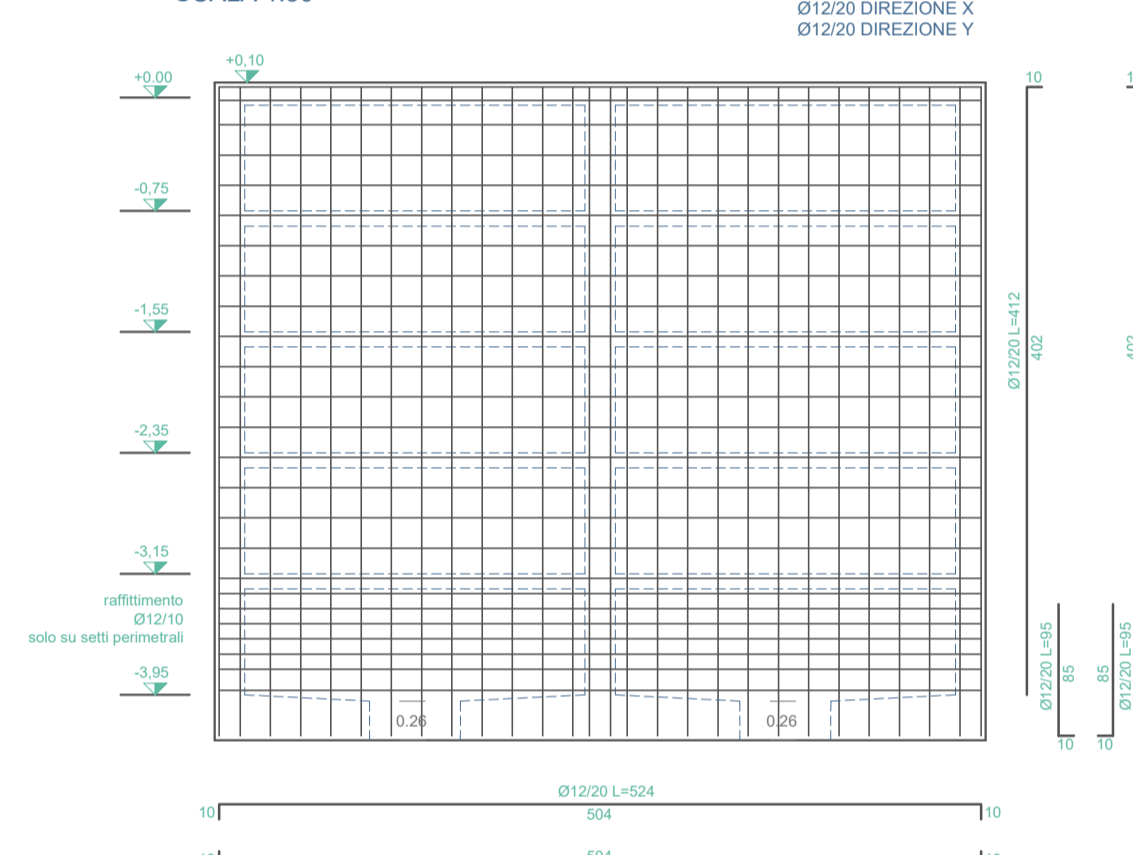
SETTO LUNGO
s=20cm
SCALA 1:50



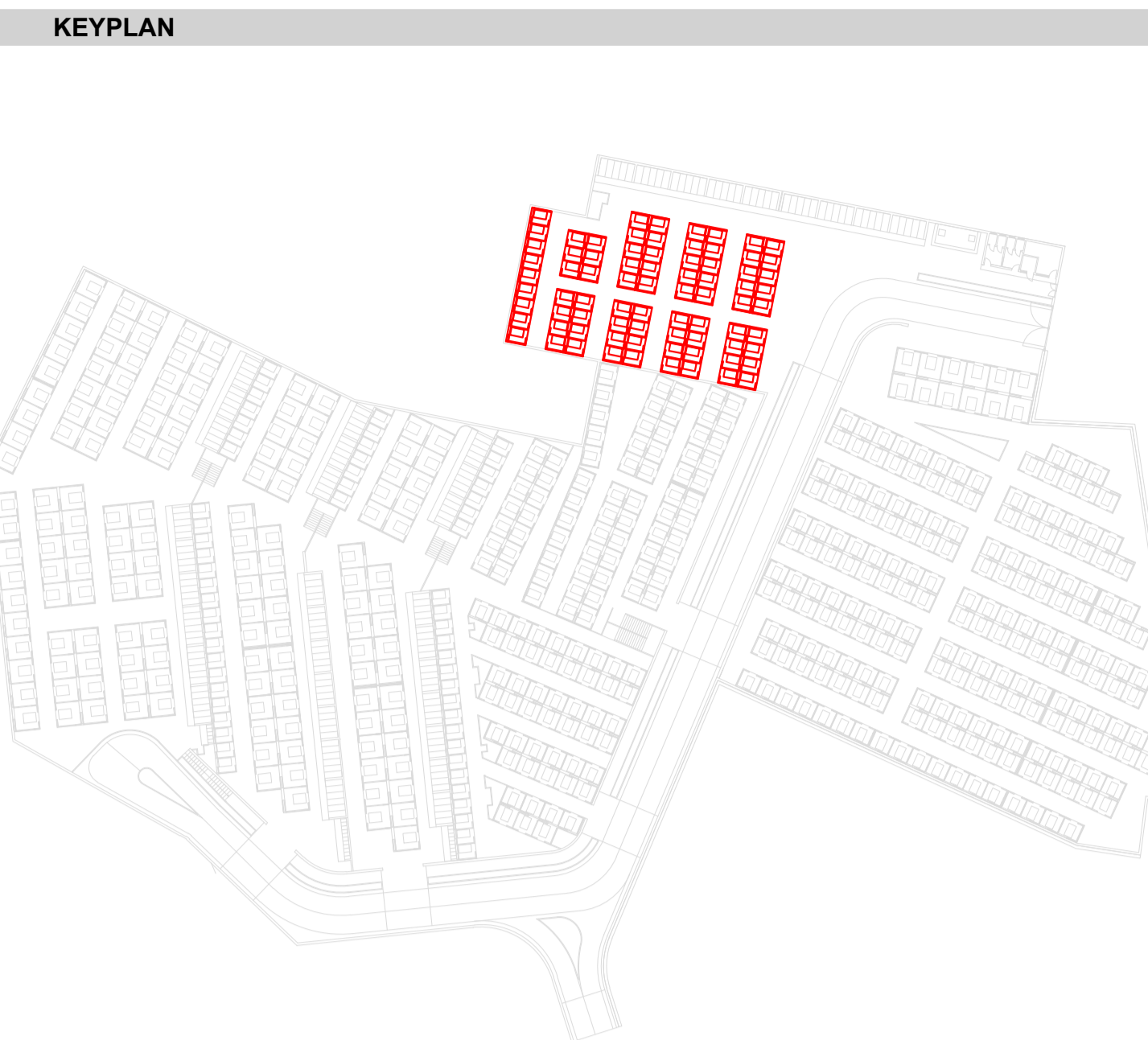
SETTO LATO CORTO
s=20cm
SCALA 1:50



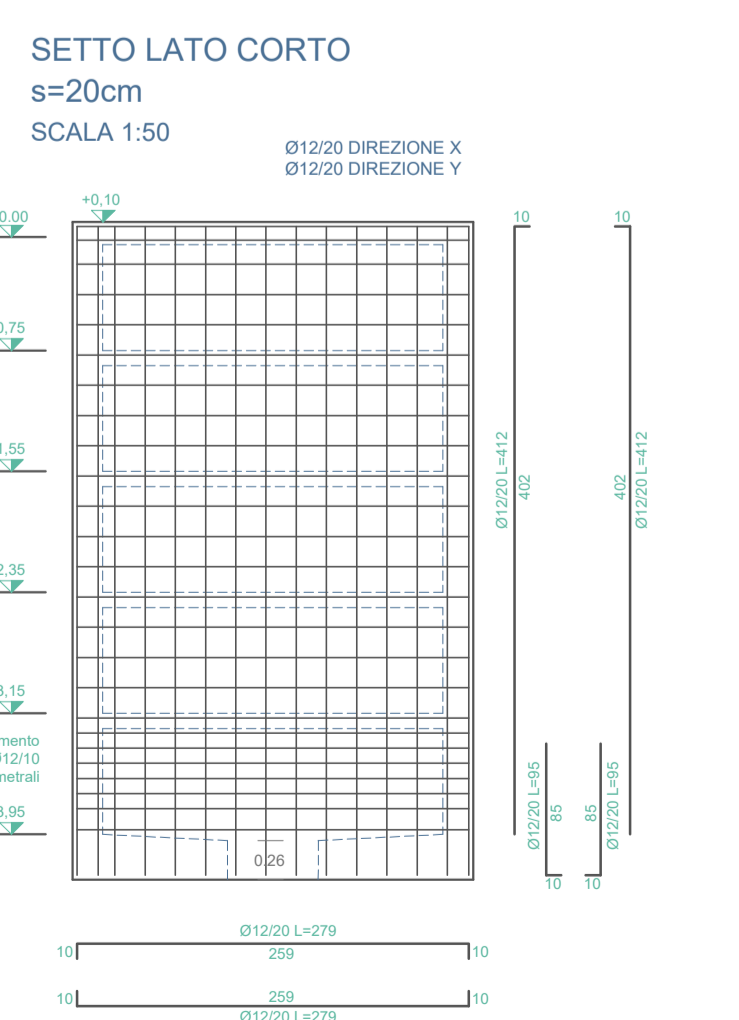
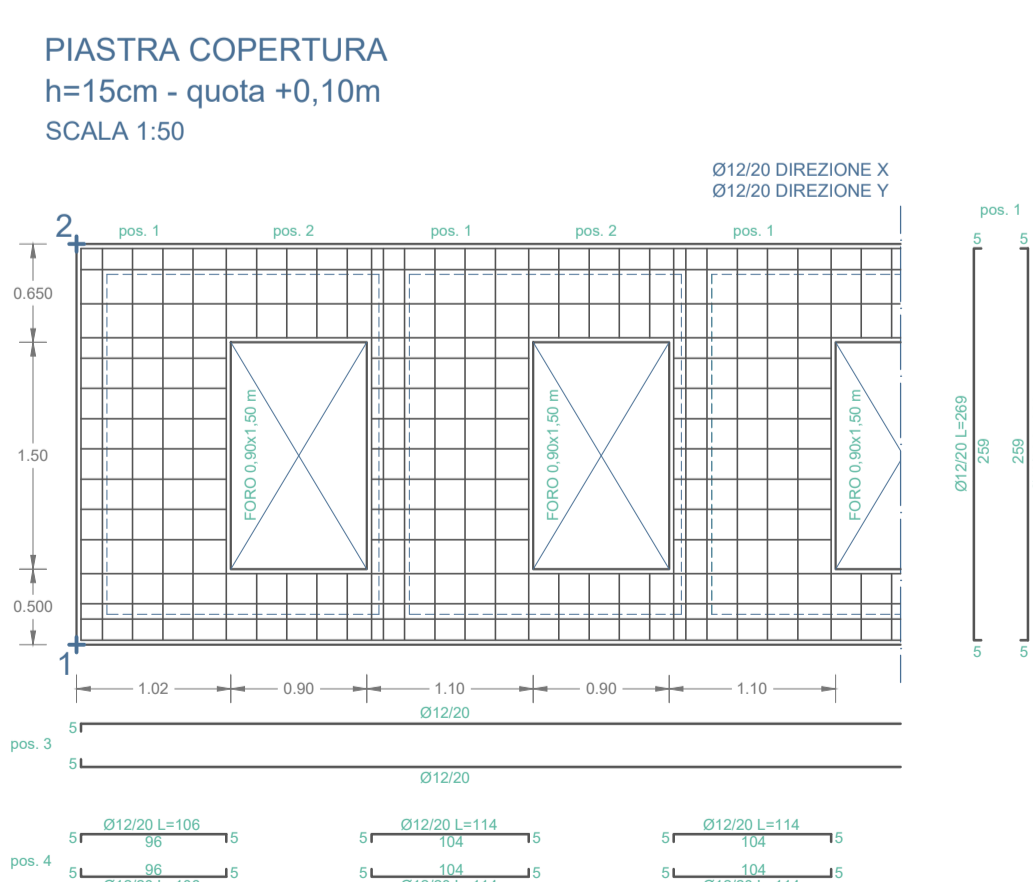
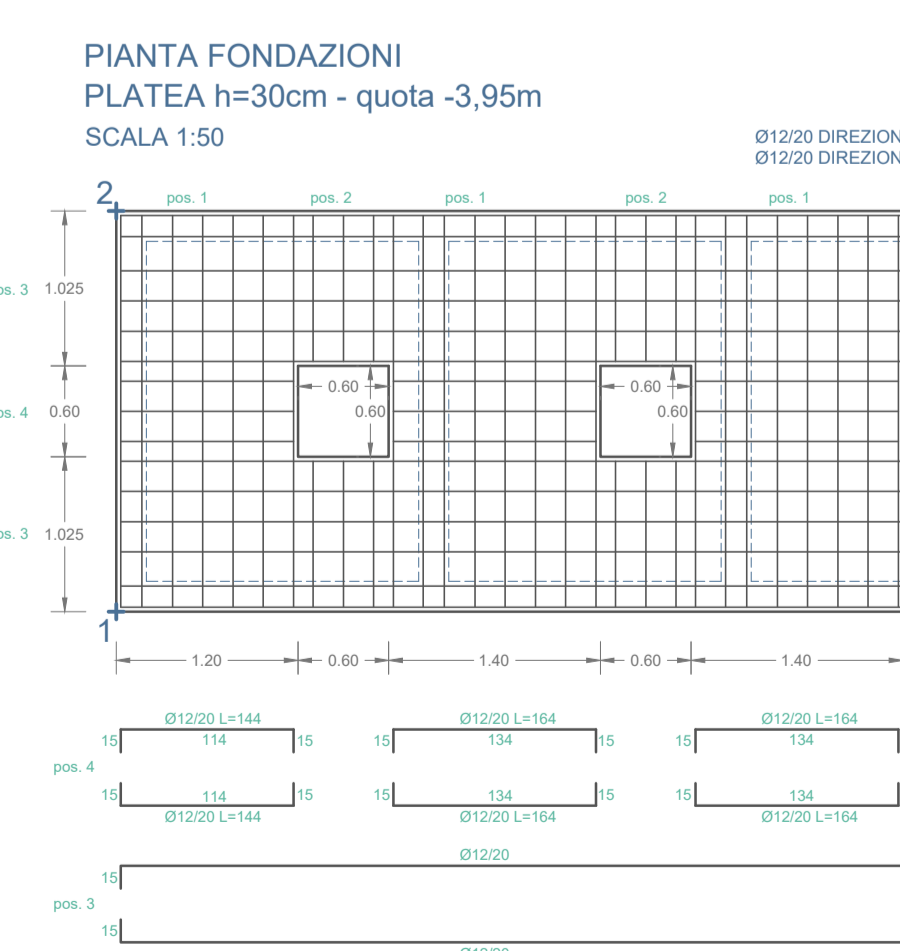
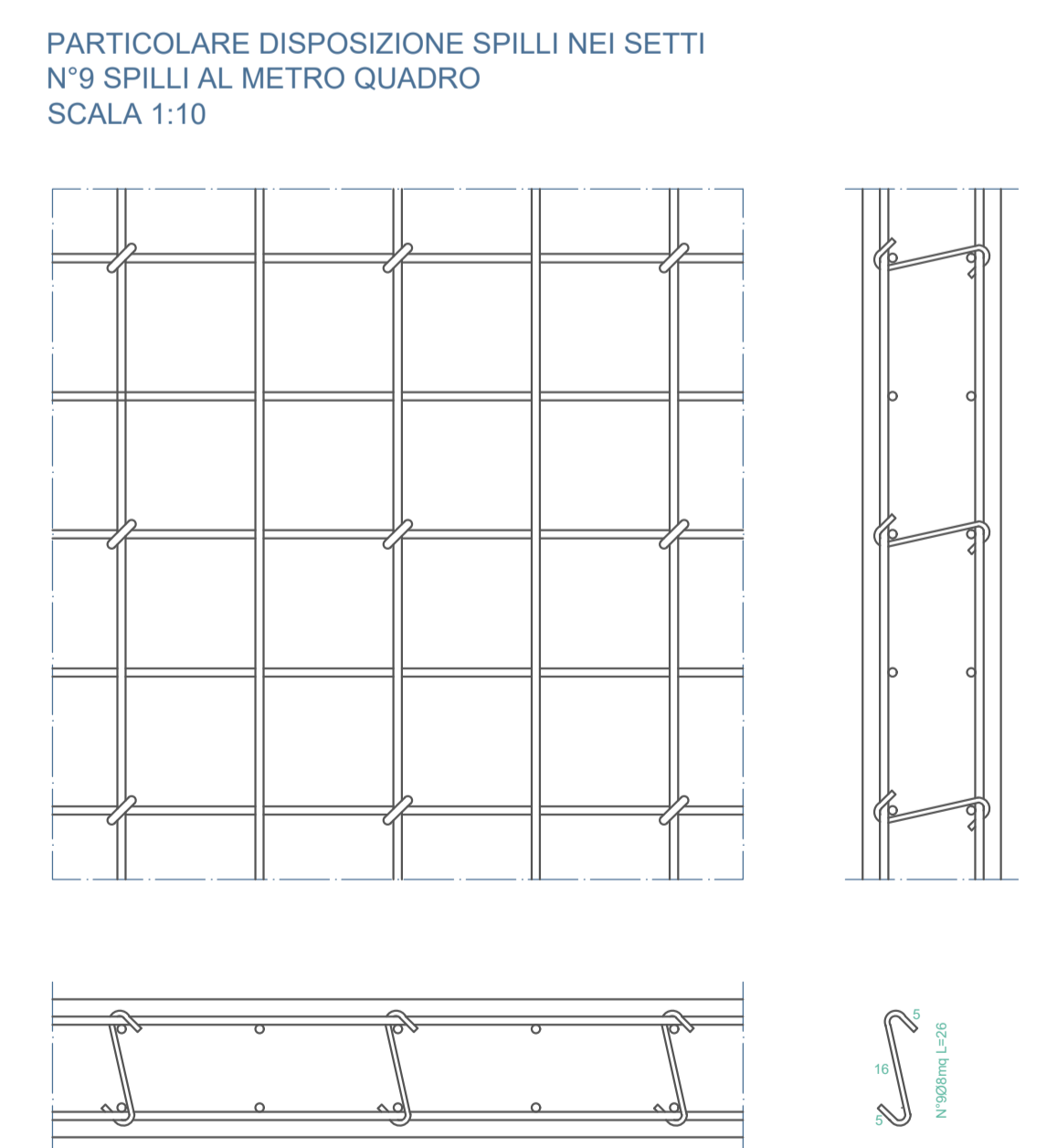
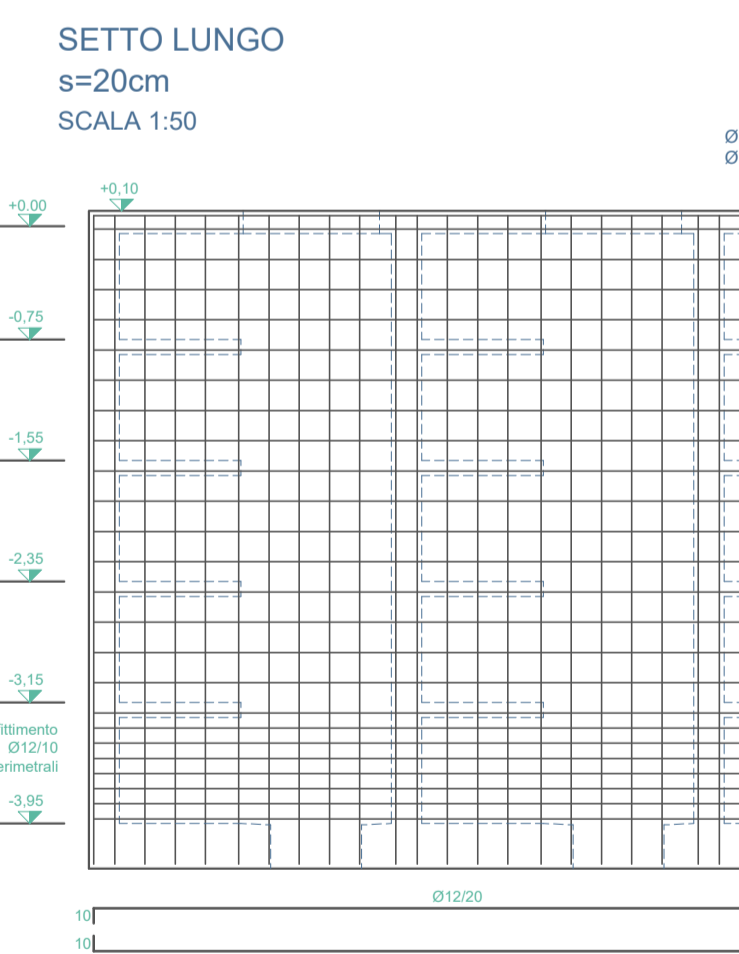
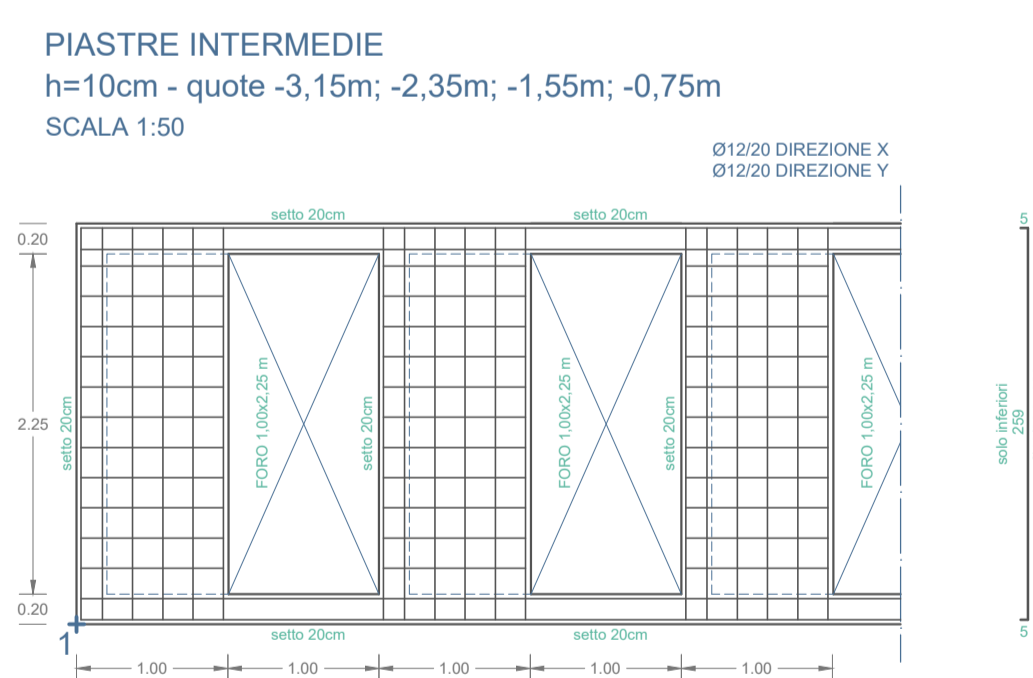
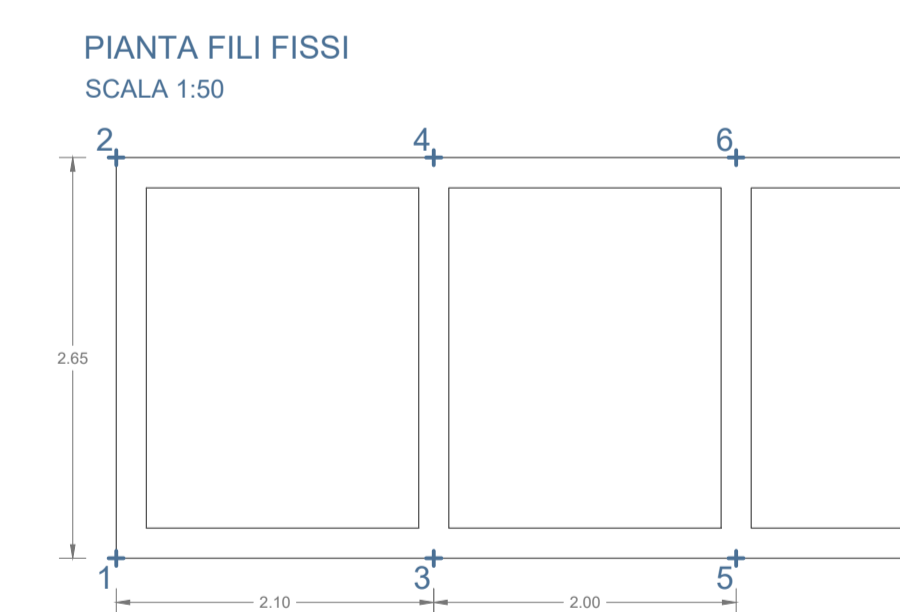
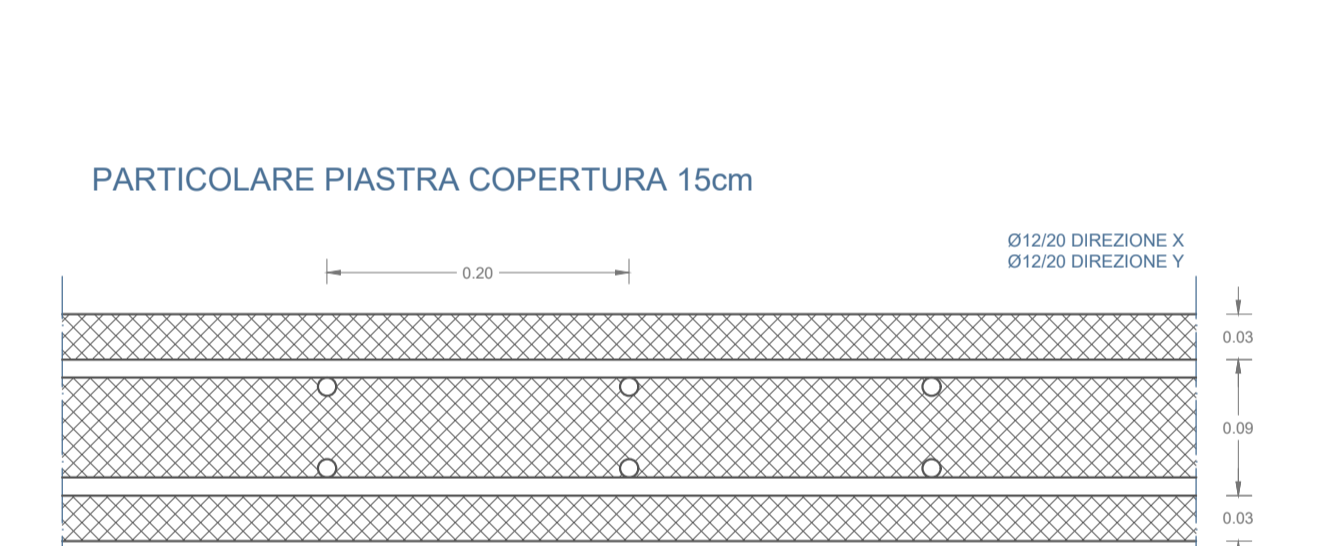
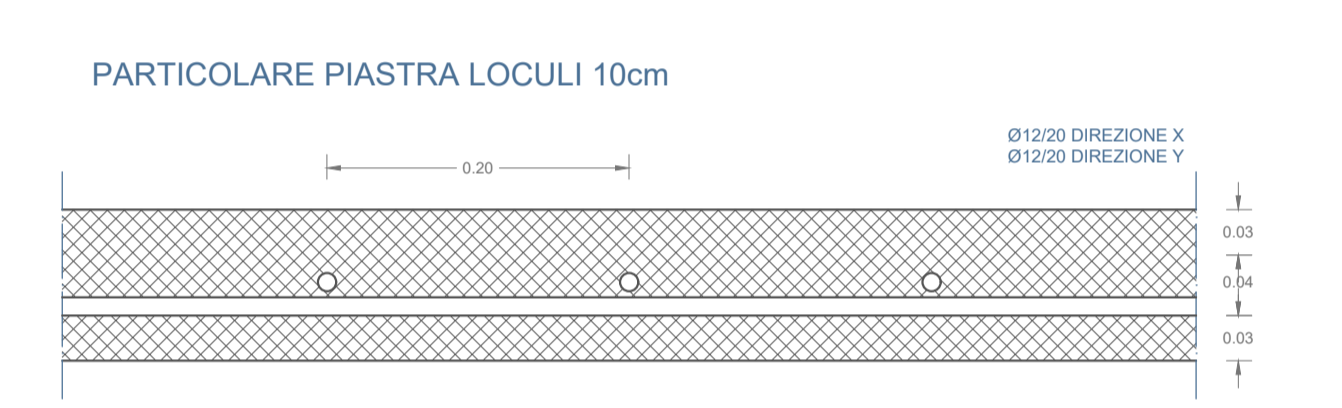
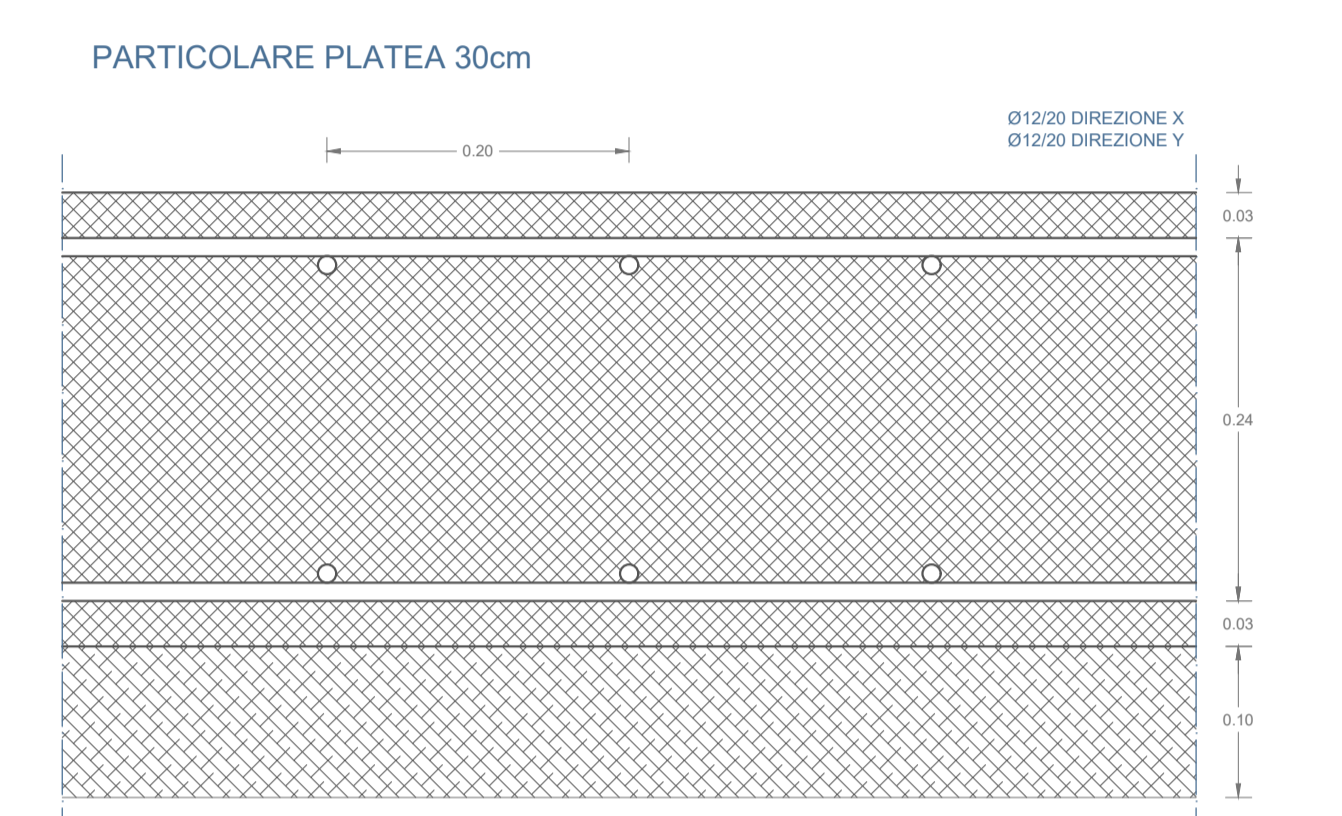
SETTO LATO CORTO
s=20cm
SCALA 1:50



CARATTERISTICHE DEI MATERIALI	PRESCRIZIONI D'OPERA
FONDAZIONI: Plateacalcestruzzo C28/35 acciaio B450C	-Copriferro: 2,5 cm in fondazione ed in elevazione.
ELEVAZIONE: Setti e piastrecalcestruzzo C28/35 acciaio B450C	-Sovrapposizione armature: 40a



PARTICOLARI COSTRUTTIVI SCALE: 1:5



PROGETTO ESECUTIVO
ai sensi degli artt. 43 e 43 bis del D.P.R. 307/2010

IL CONCESSIONARIO

Termini Imerese Srl

Amministratore
Luigi Galasso

I PROGETTISTI

PROGECA
PROGETTAZIONE ESECUTIVA
ARCHITETTURA
ING. VILKAS ČIPIKAS
Ord. Ing. Caserta n° 3358

Ing. Domenico Forlida
Ord. Ing. Caserta n° 2632

Ing. Mario Perri
Ord. Ing. Caserta n° 4326

TAV S.14

**ESECUTIVI STRUTTURALI E PARTICOLARI COSTRUTTIVI
SEPOLTURA SEMPLICE**

COMUNE DI TERMINI IMERESE
Provincia di Palermo

CONTRATTO PER L'AMPLIAMENTO CIMITERO E GESTIONE DEL NUOVO E VECCHIO CIMITERO DEL COMUNE DI TERMINI IMERESE
(Contratto di concessione del 27 Settembre 2012 - Rep. n. 10829 - Racc. n. 31)

GENNAIO 2019