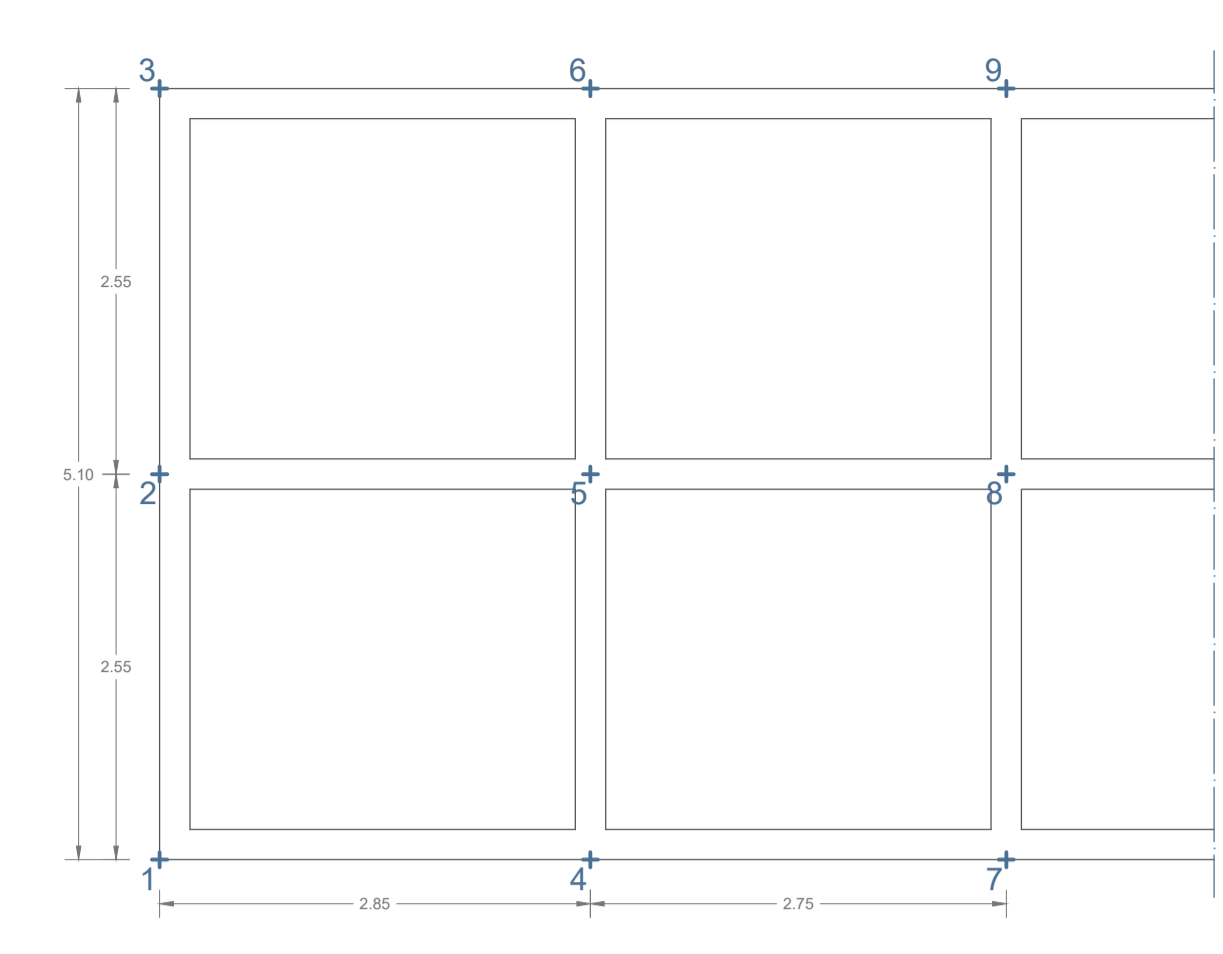
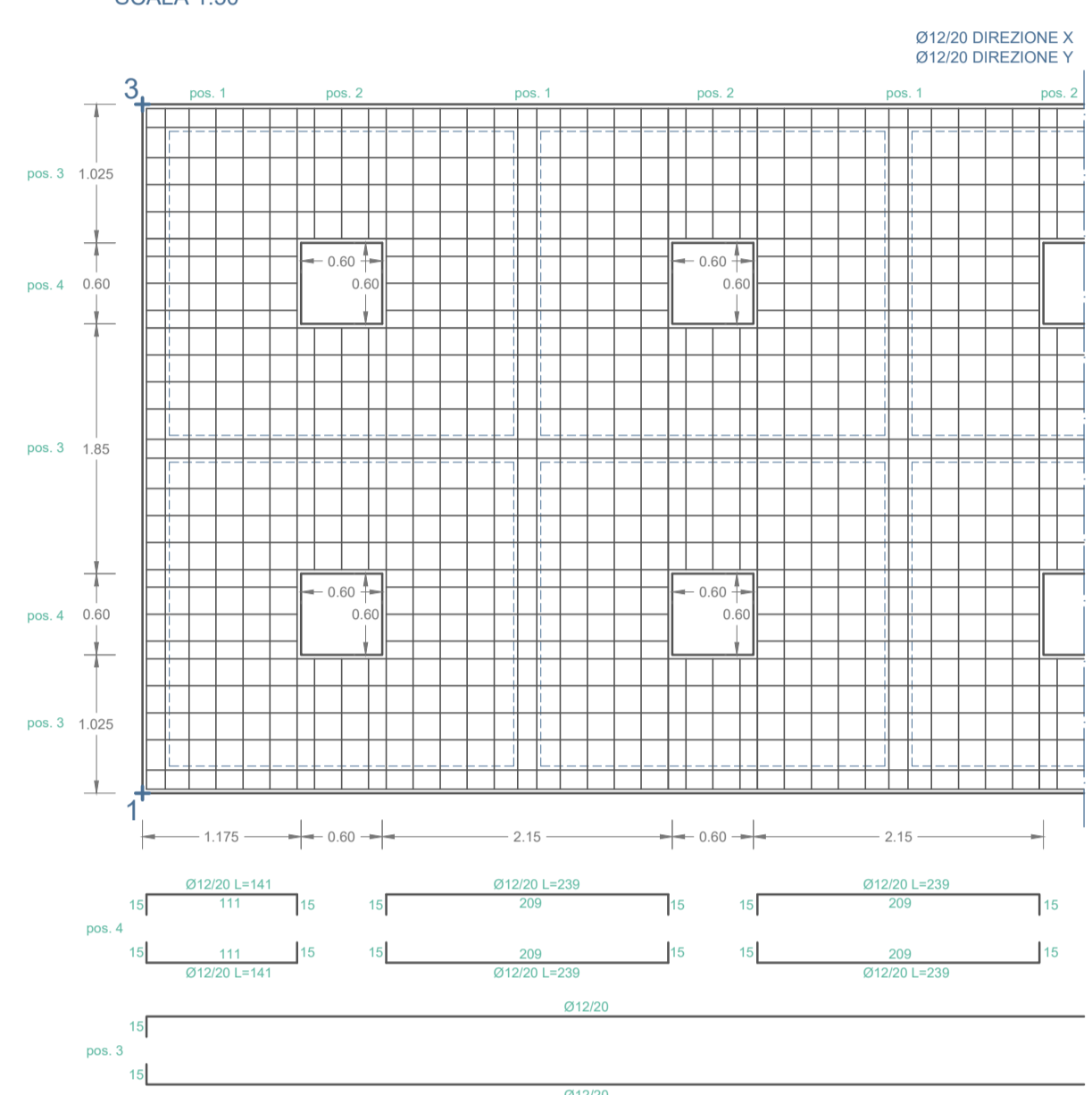


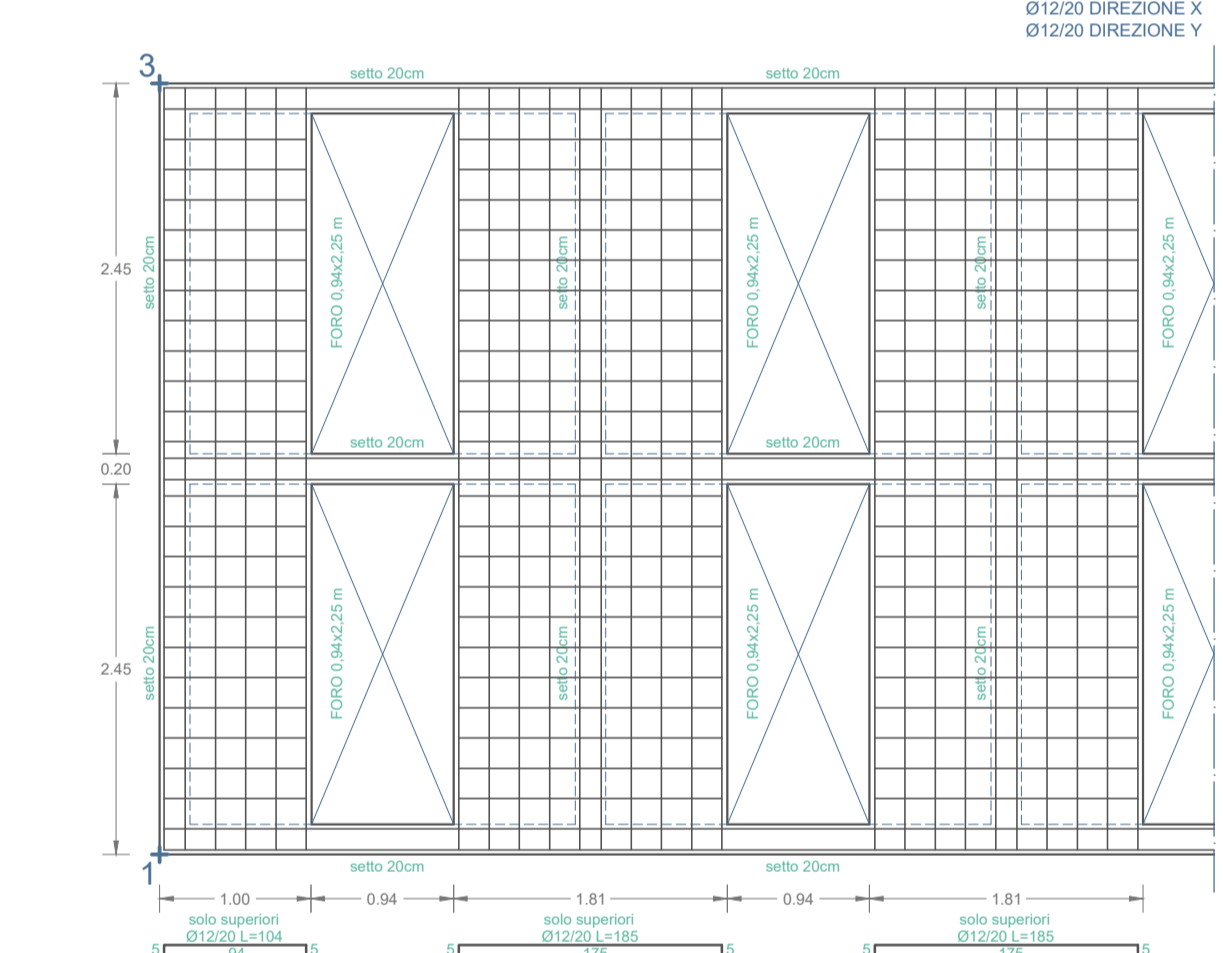
PIANTA FILI FISSI
SCALA 1:50



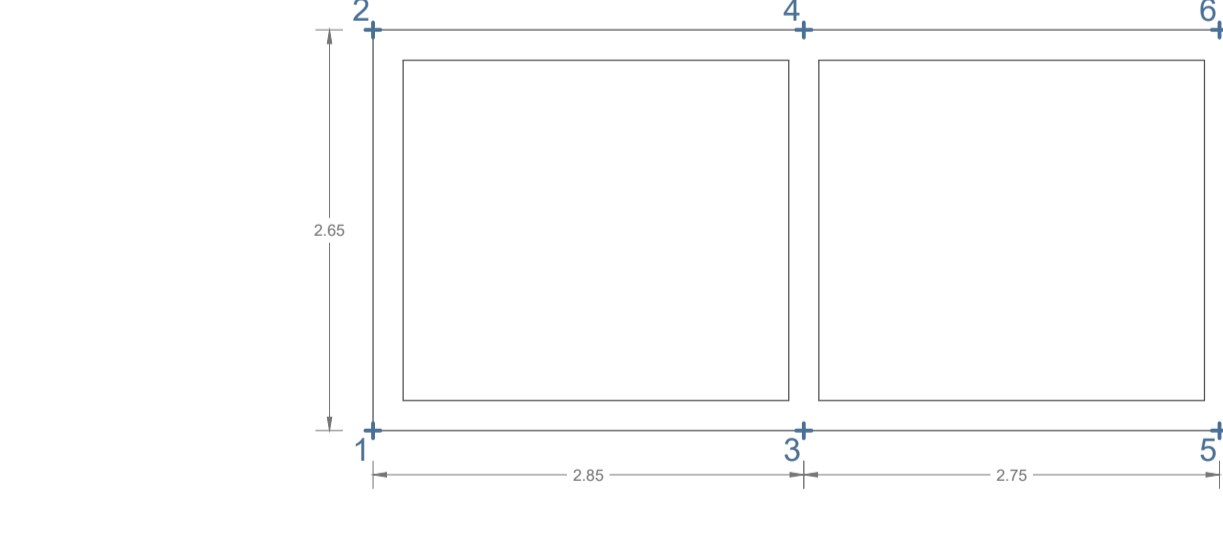
PIANTA FONDAZIONI
PLATEA h=30cm - quota -3,95m
SCALA 1:50



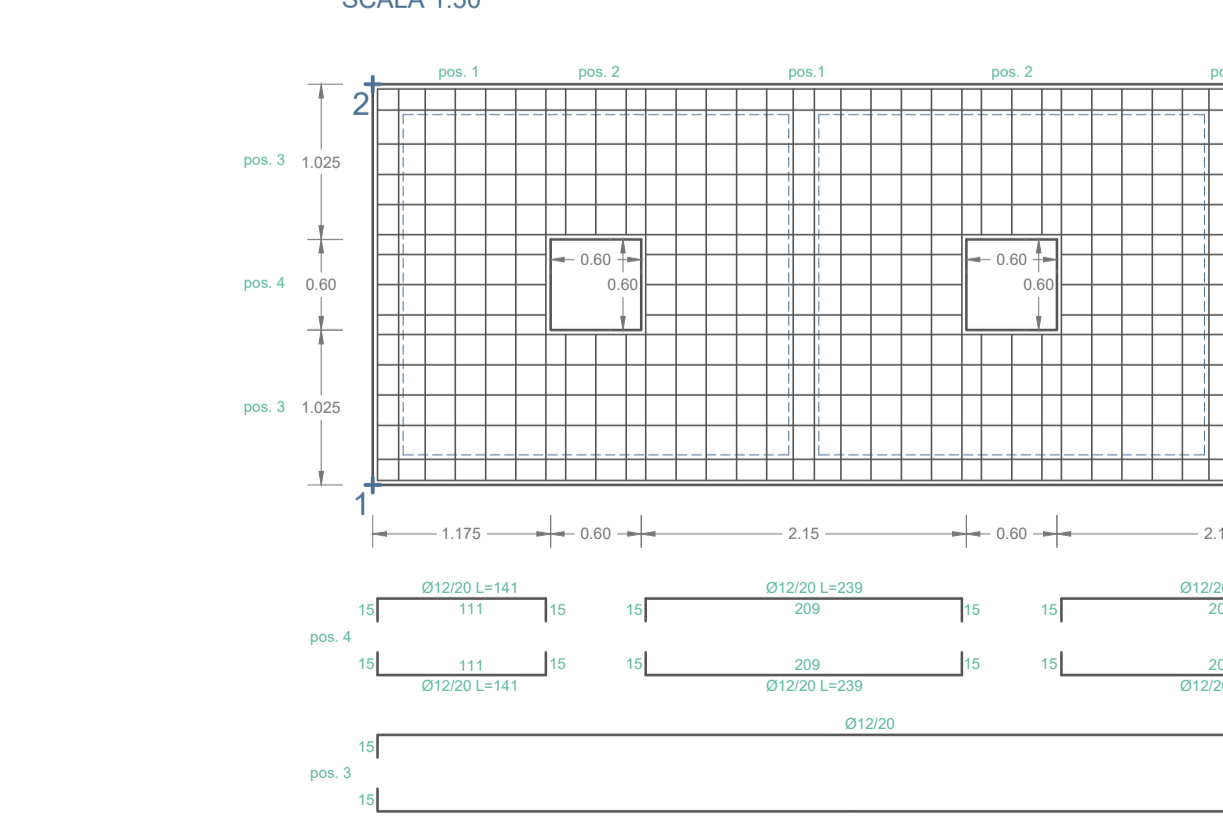
PIASTRE INTERMEDIE
h=10cm - quote -3,15m; -2,35m; -1,55m; -0,75m
SCALA 1:50



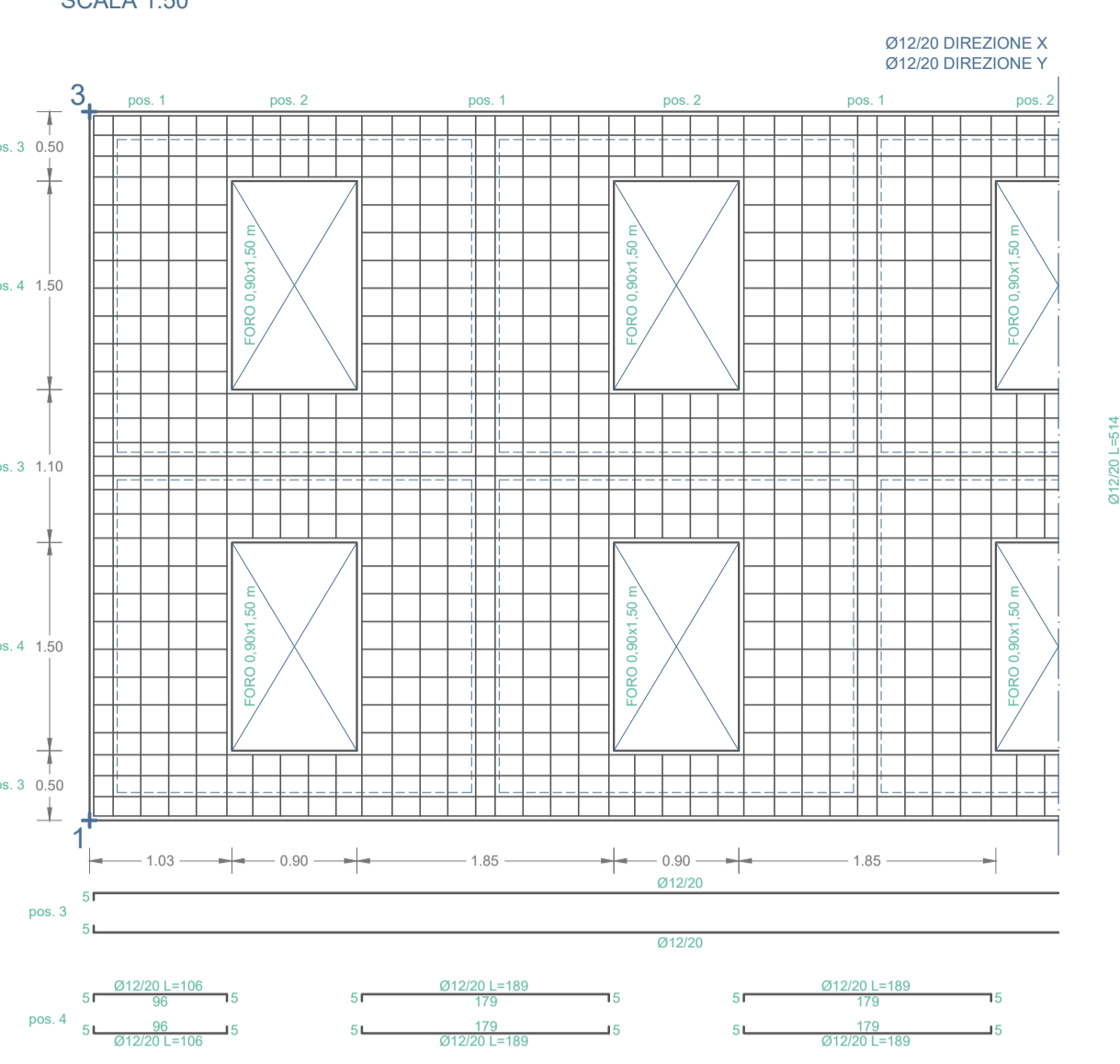
PIANTA FILI FISSI
SCALA 1:50



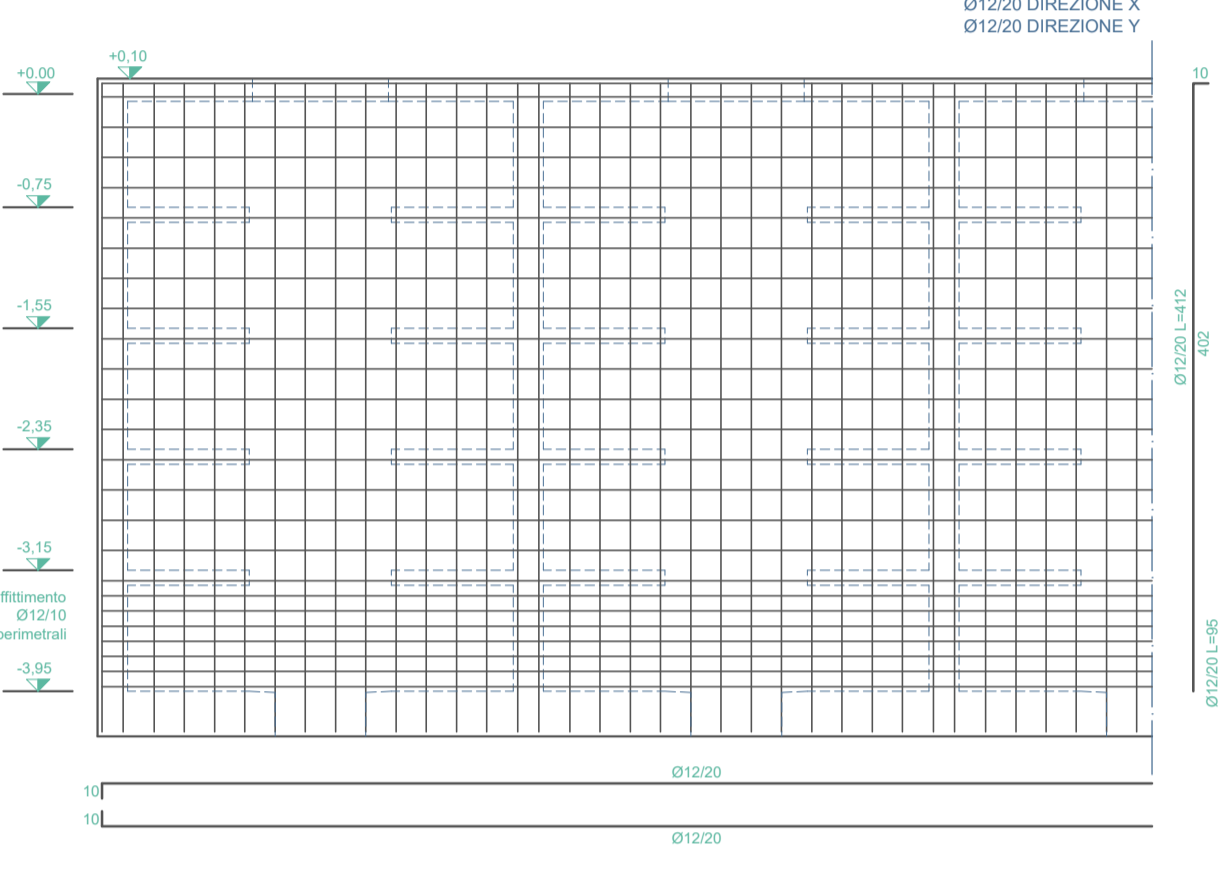
PIANTA FONDAZIONI
PLATEA h=30cm - quota -3,95m
SCALA 1:50



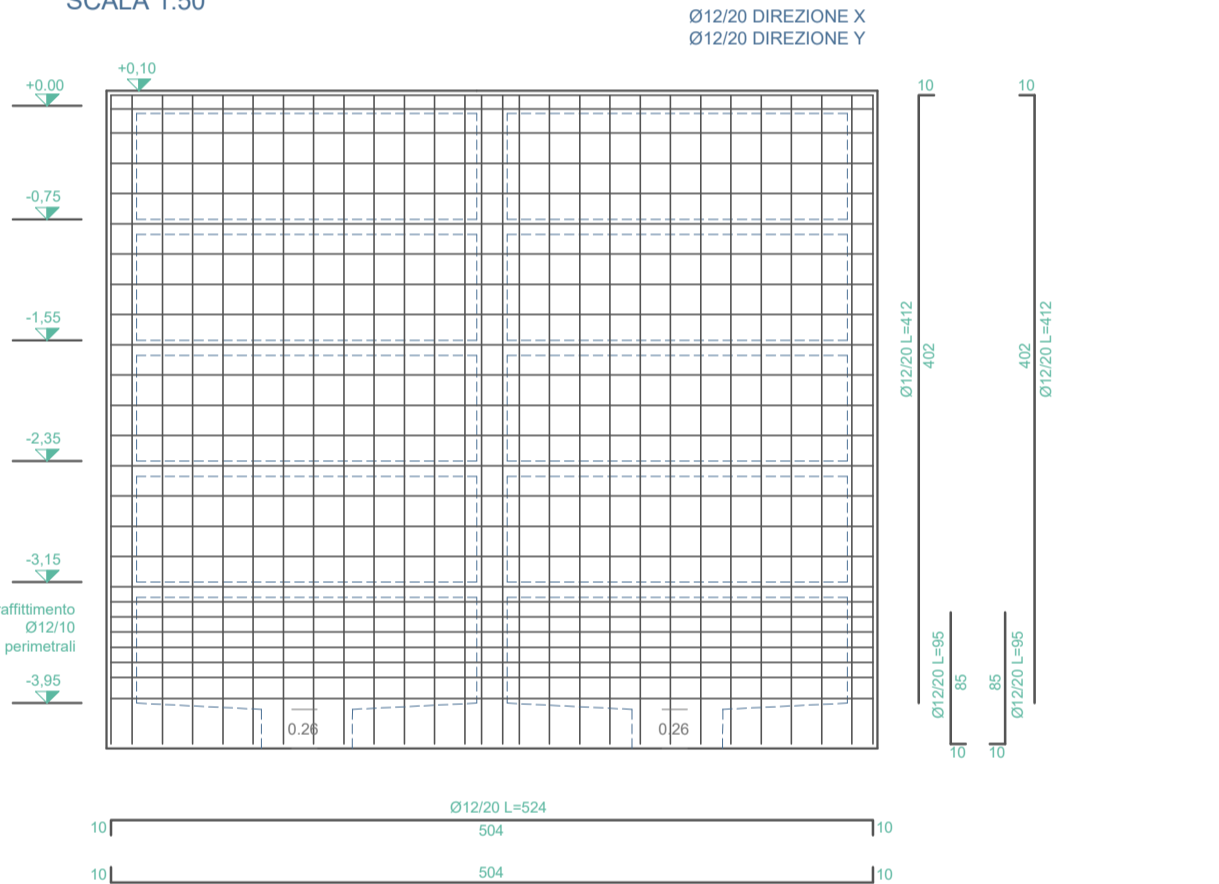
PIASTRA COPERTURA
h=15cm - quota +0,10m
SCALA 1:50



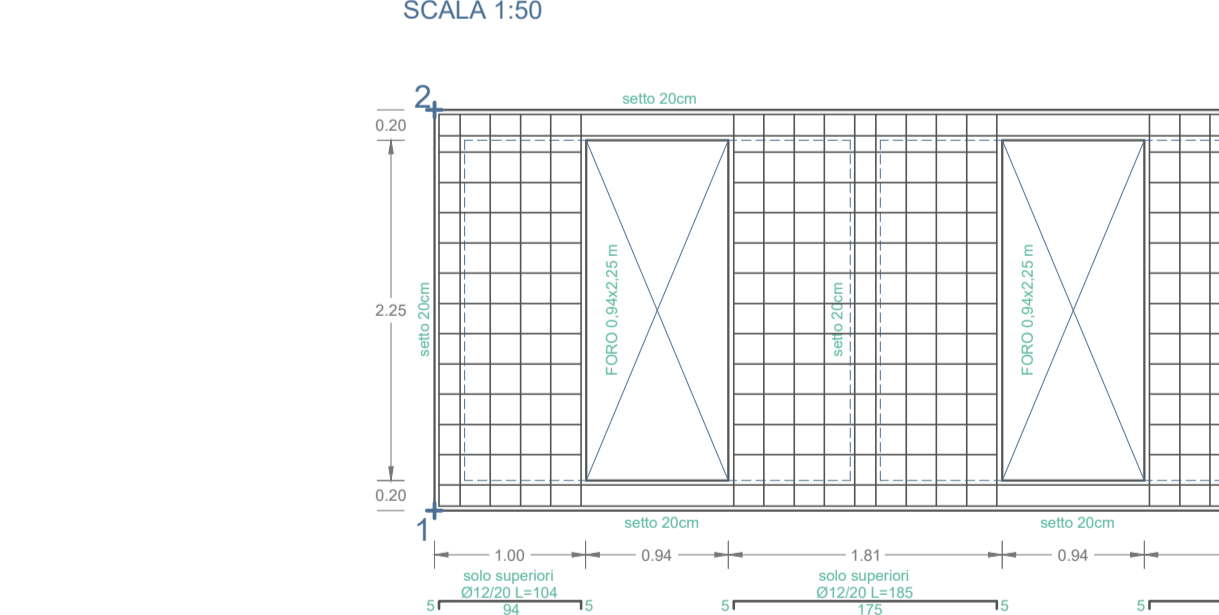
SETTO LUNGO
s=20cm
SCALA 1:50



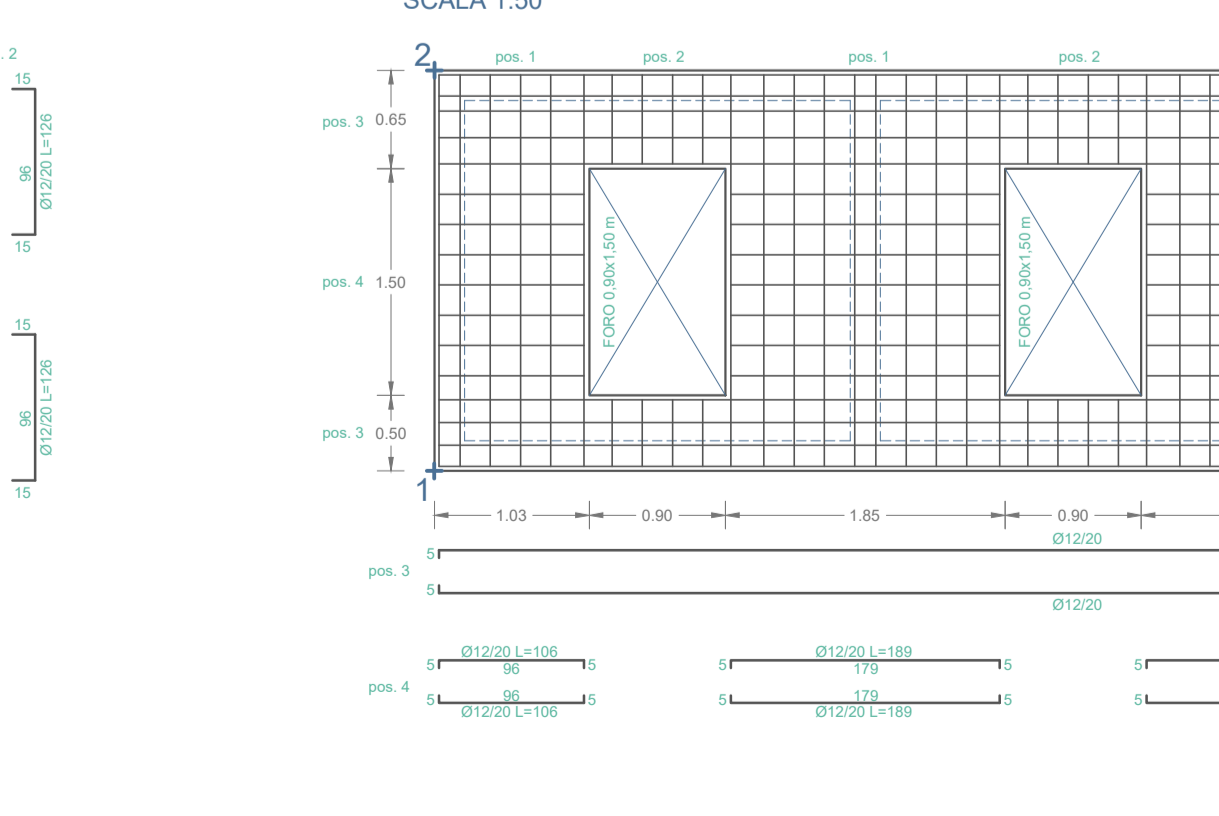
SETTO LATO CORTO
s=20cm
SCALA 1:50



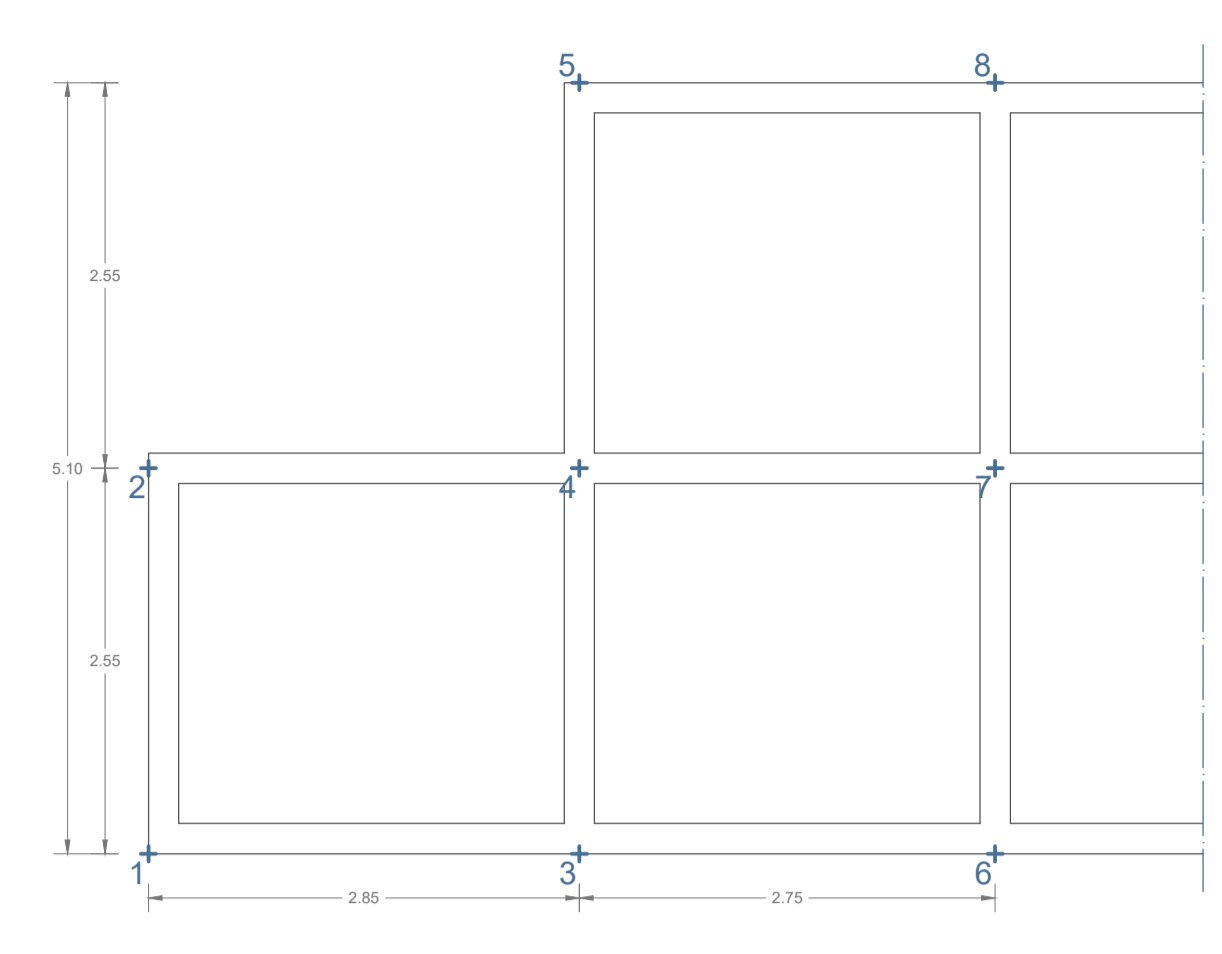
PIASTRE INTERMEDIE
h=10cm - quote -3,15m; -2,35m; -1,55m; -0,75m
SCALA 1:50



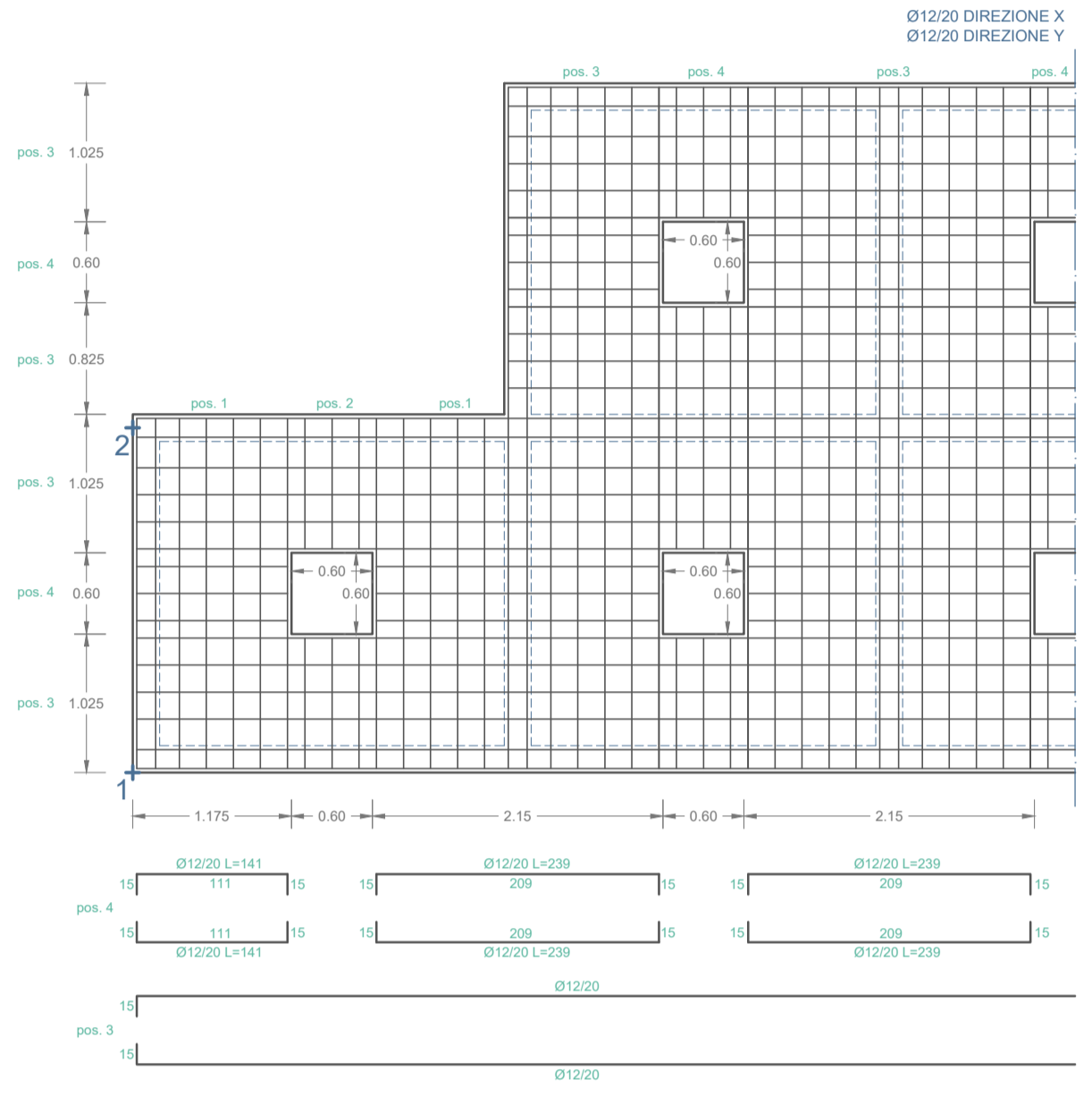
PIASTRA COPERTURA
h=15cm - quota +0,10m
SCALA 1:50



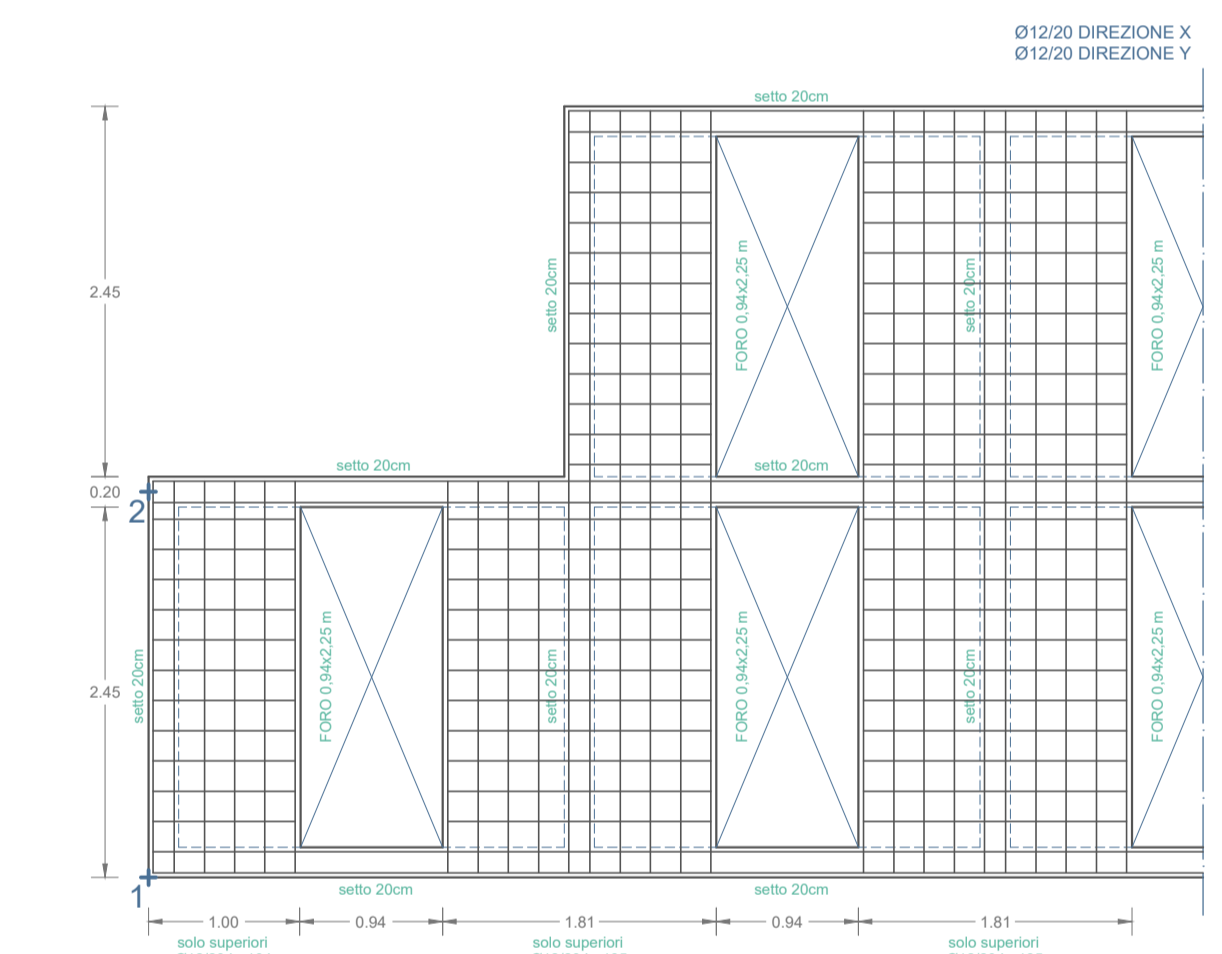
PIANTA FILI FISSI
SCALA 1:50



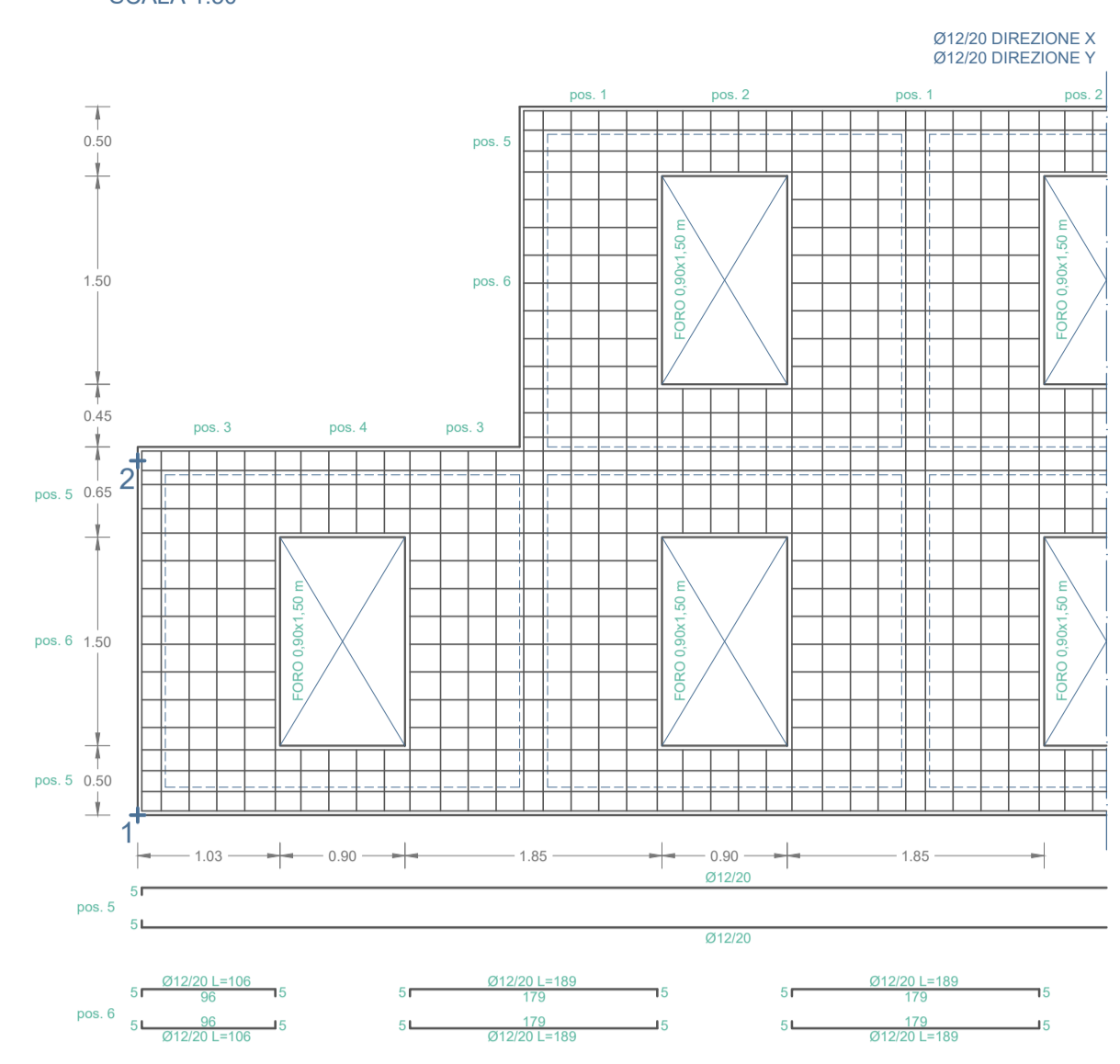
PIANTA FONDAZIONI
PLATEA h=30cm - quota -3,95m
SCALA 1:50



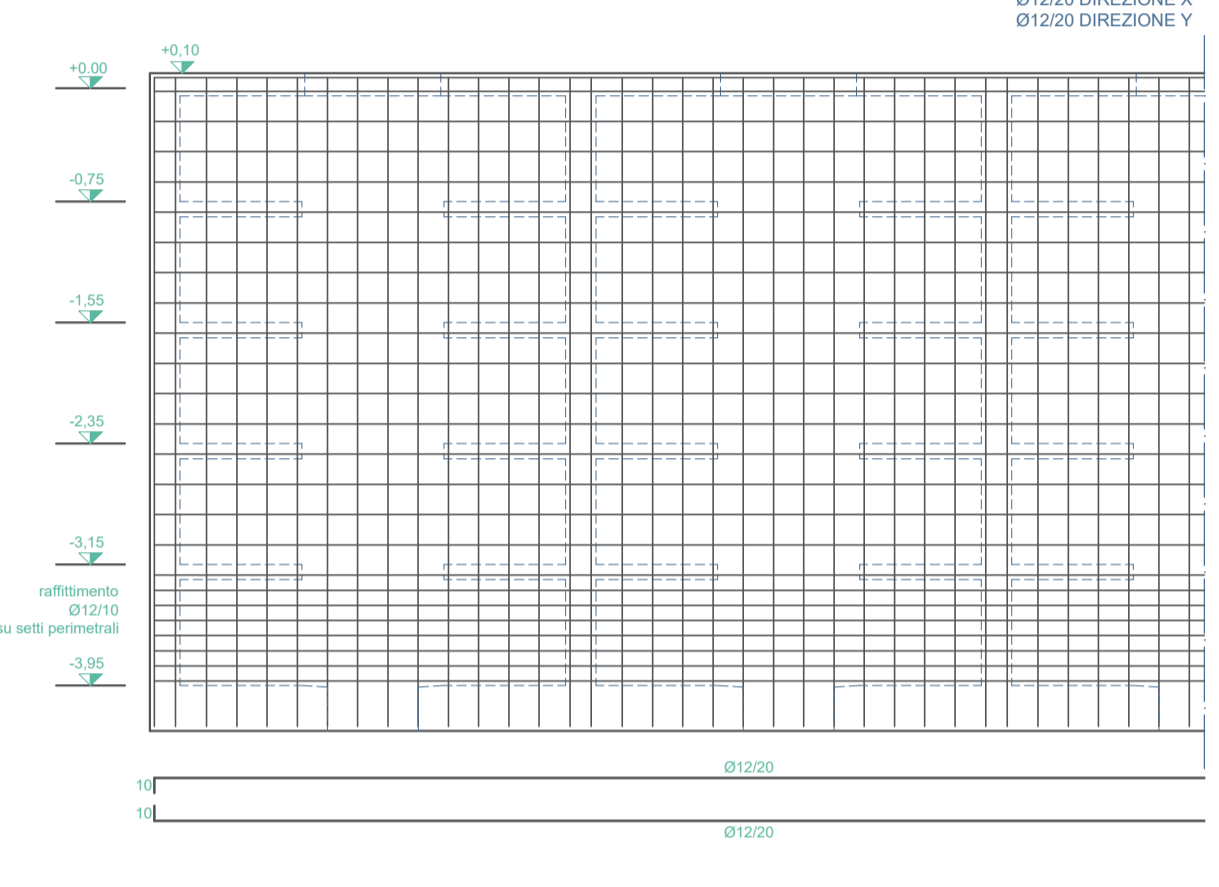
PIASTRE INTERMEDIE
h=10cm - quote -3,15m; -2,35m; -1,55m; -0,75m
SCALA 1:50



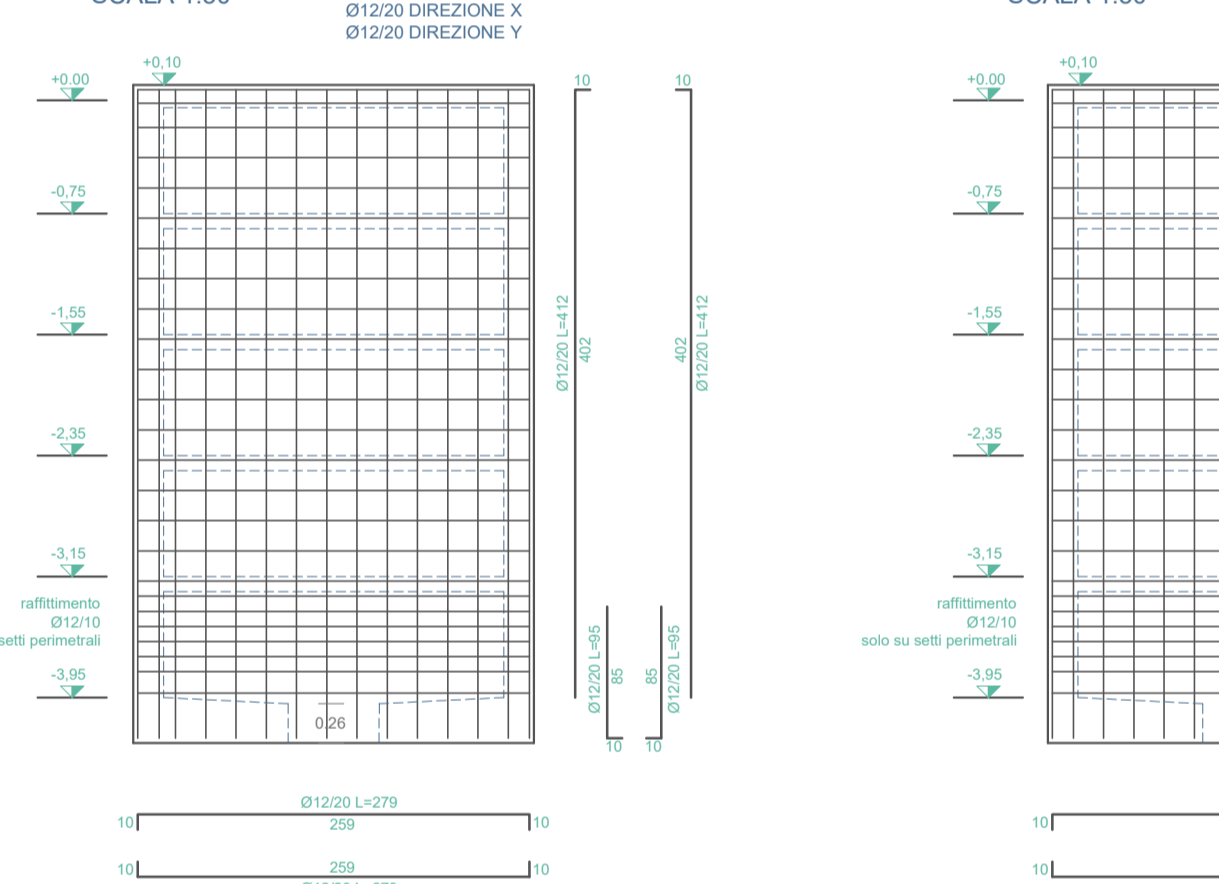
PIASTRA COPERTURA
h=15cm - quota +0,10m
SCALA 1:50



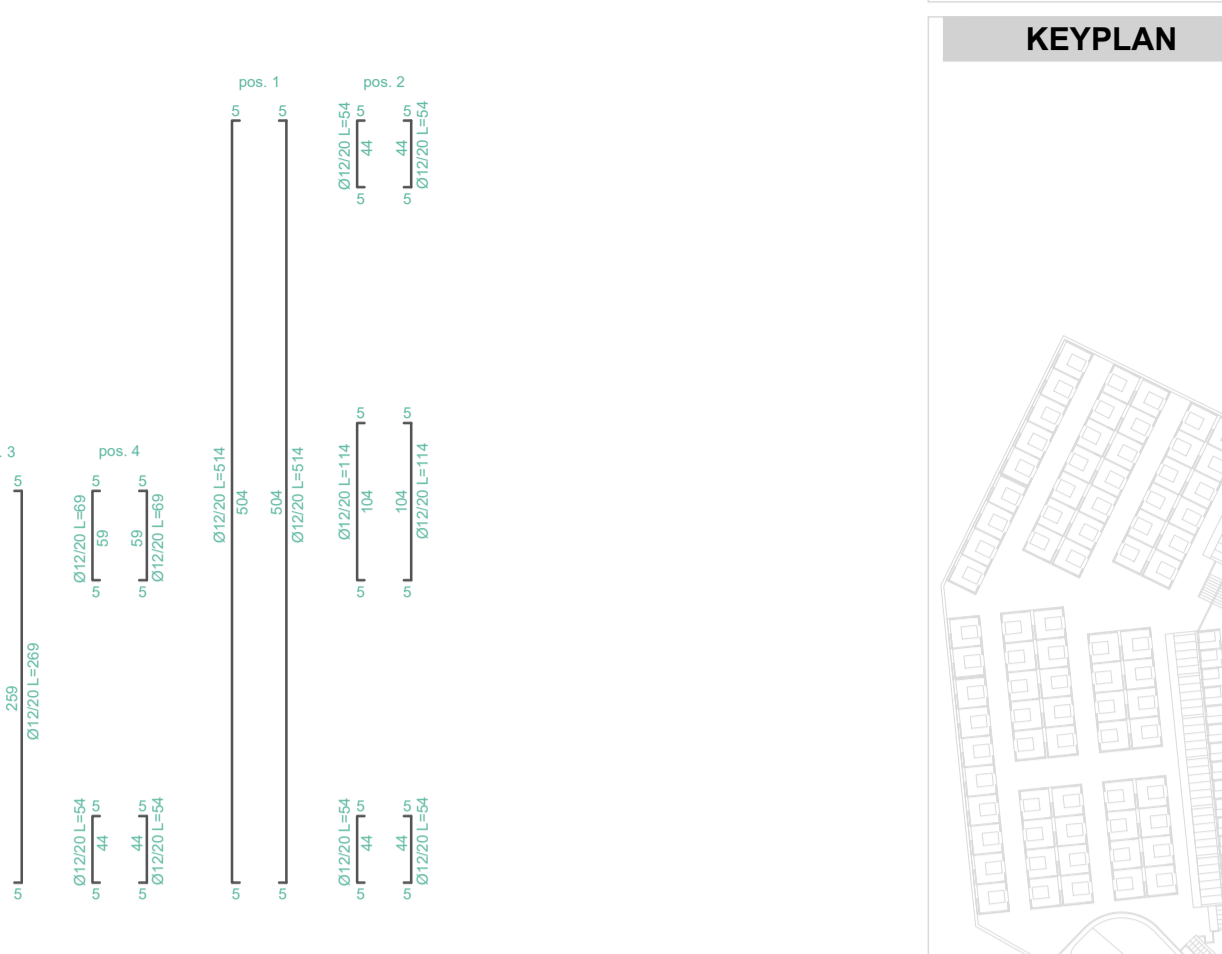
SETTO LUNGO
s=20cm
SCALA 1:50



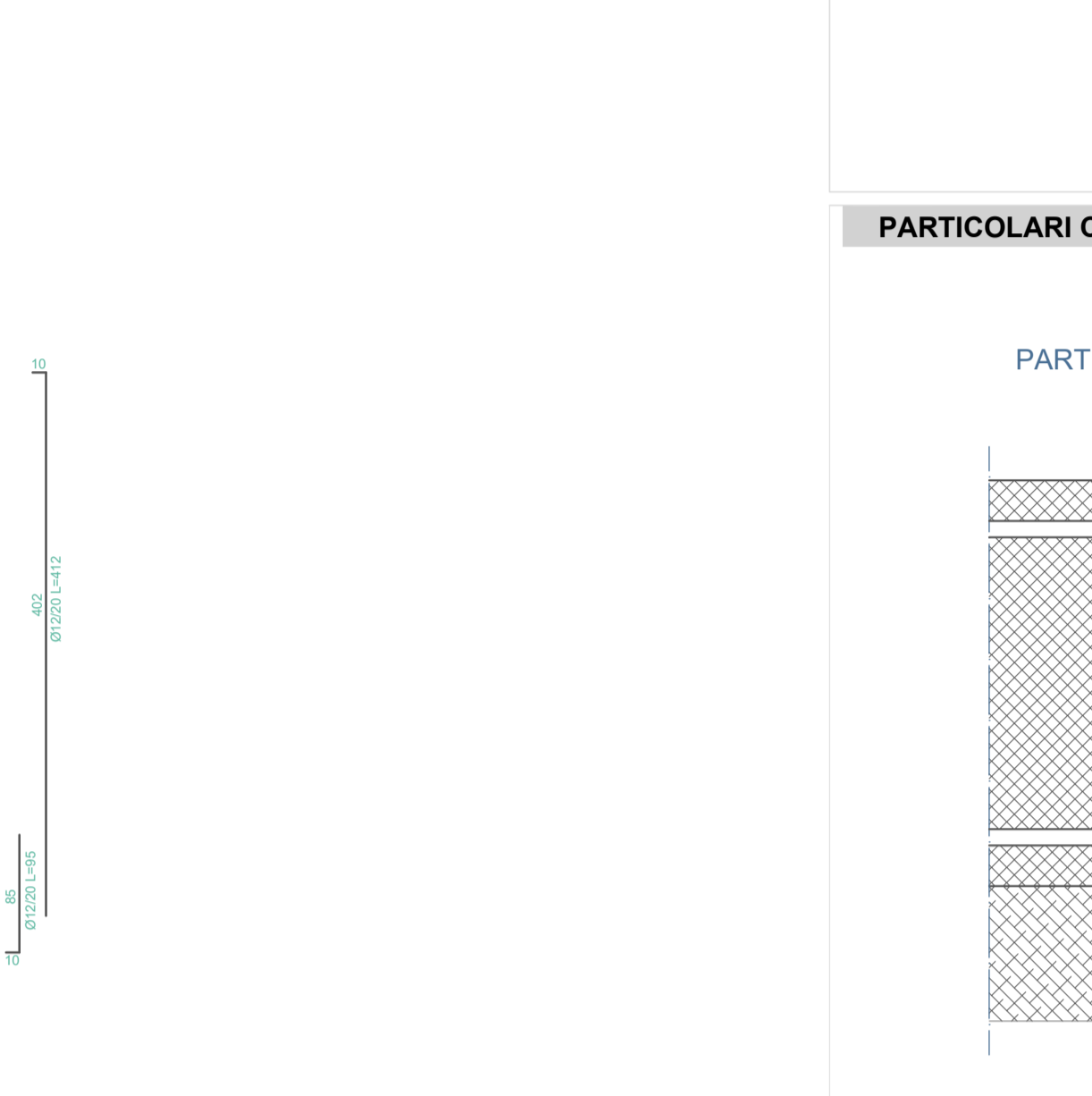
SETTO LATO CORTO
s=20cm
SCALA 1:50



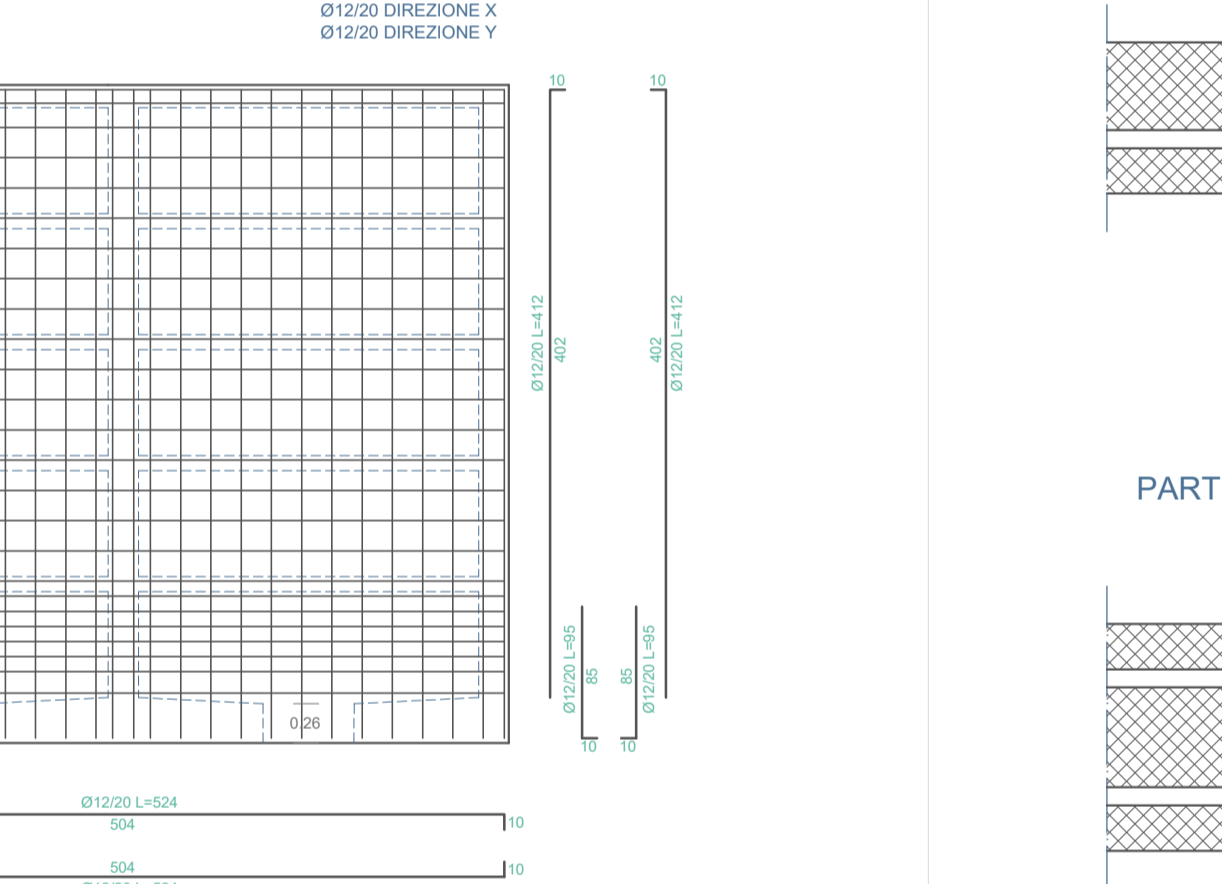
PIASTRE INTERMEDIE
h=10cm - quote -3,15m; -2,35m; -1,55m; -0,75m
SCALA 1:50



PIANTA FONDAZIONI
PLATEA h=30cm - quota -3,95m
SCALA 1:50



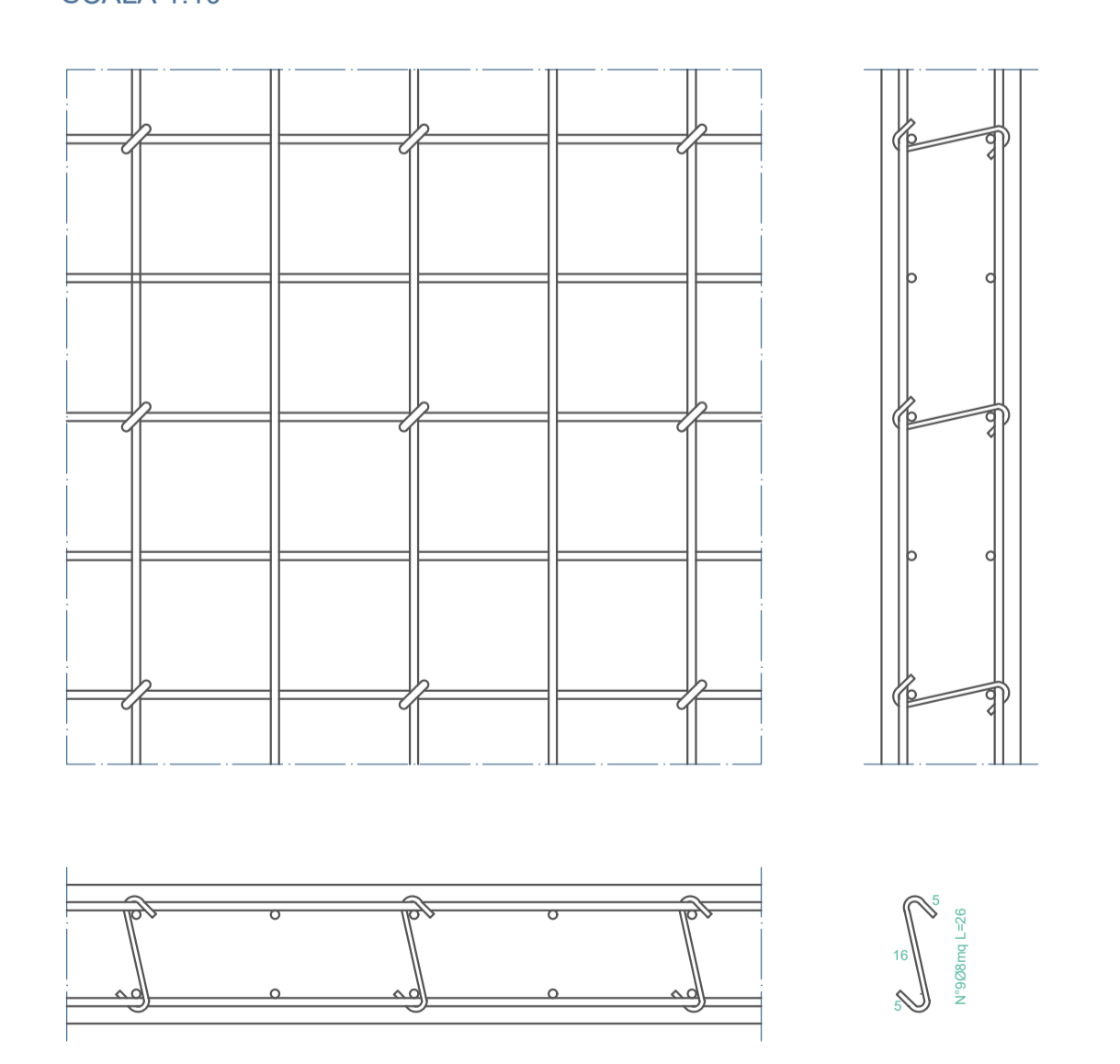
SETTO LUNGO
s=20cm
SCALA 1:50



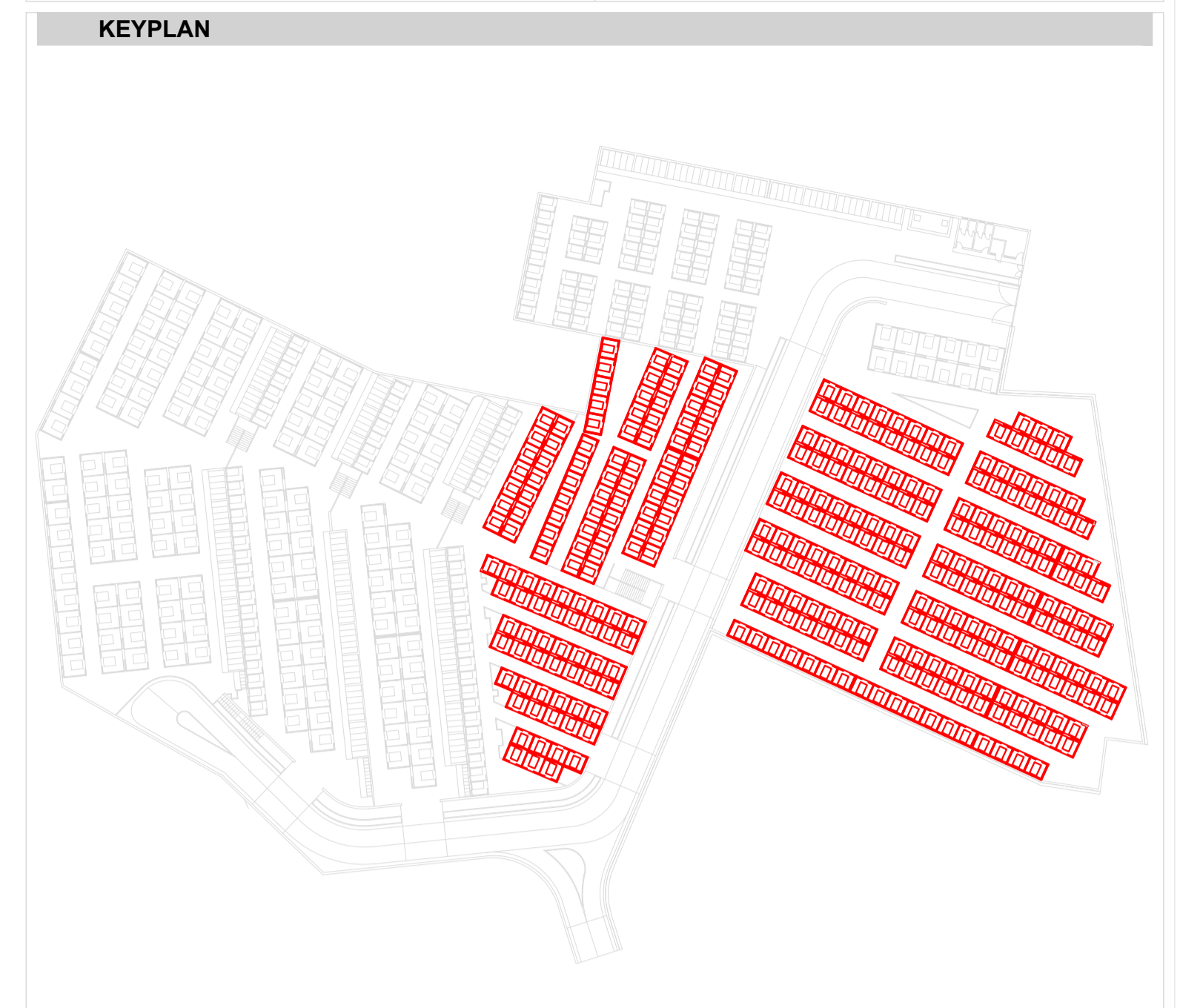
SETTO LATO CORTO
s=20cm
SCALA 1:50



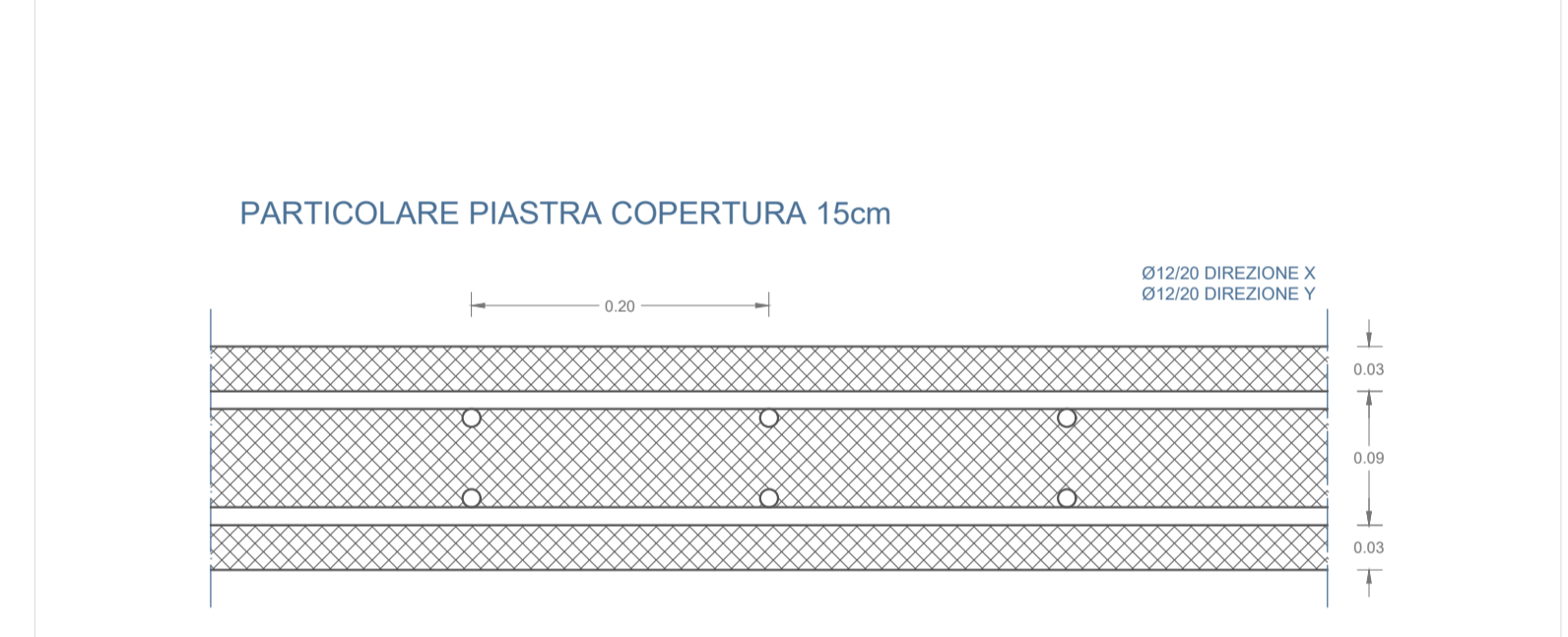
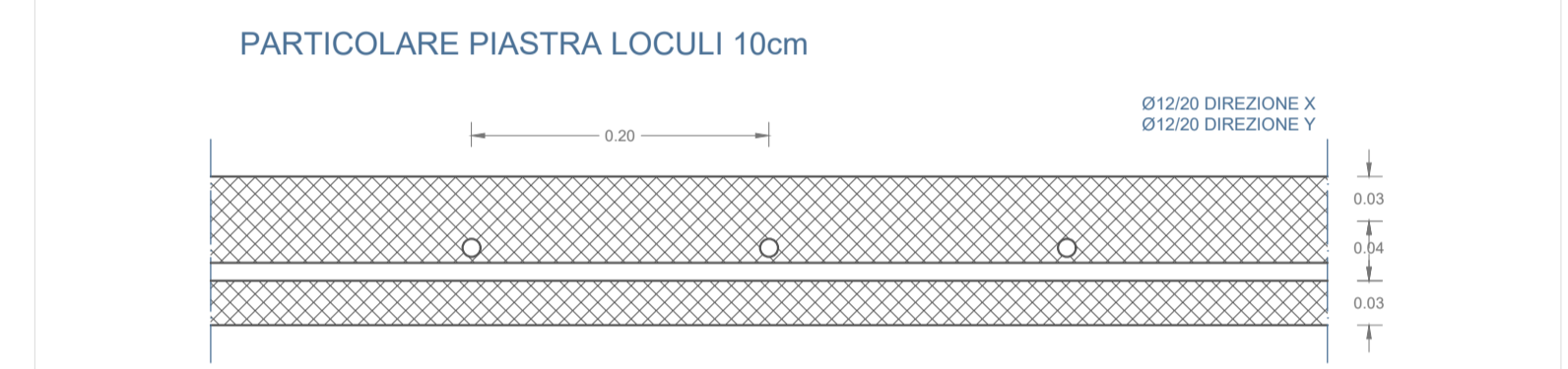
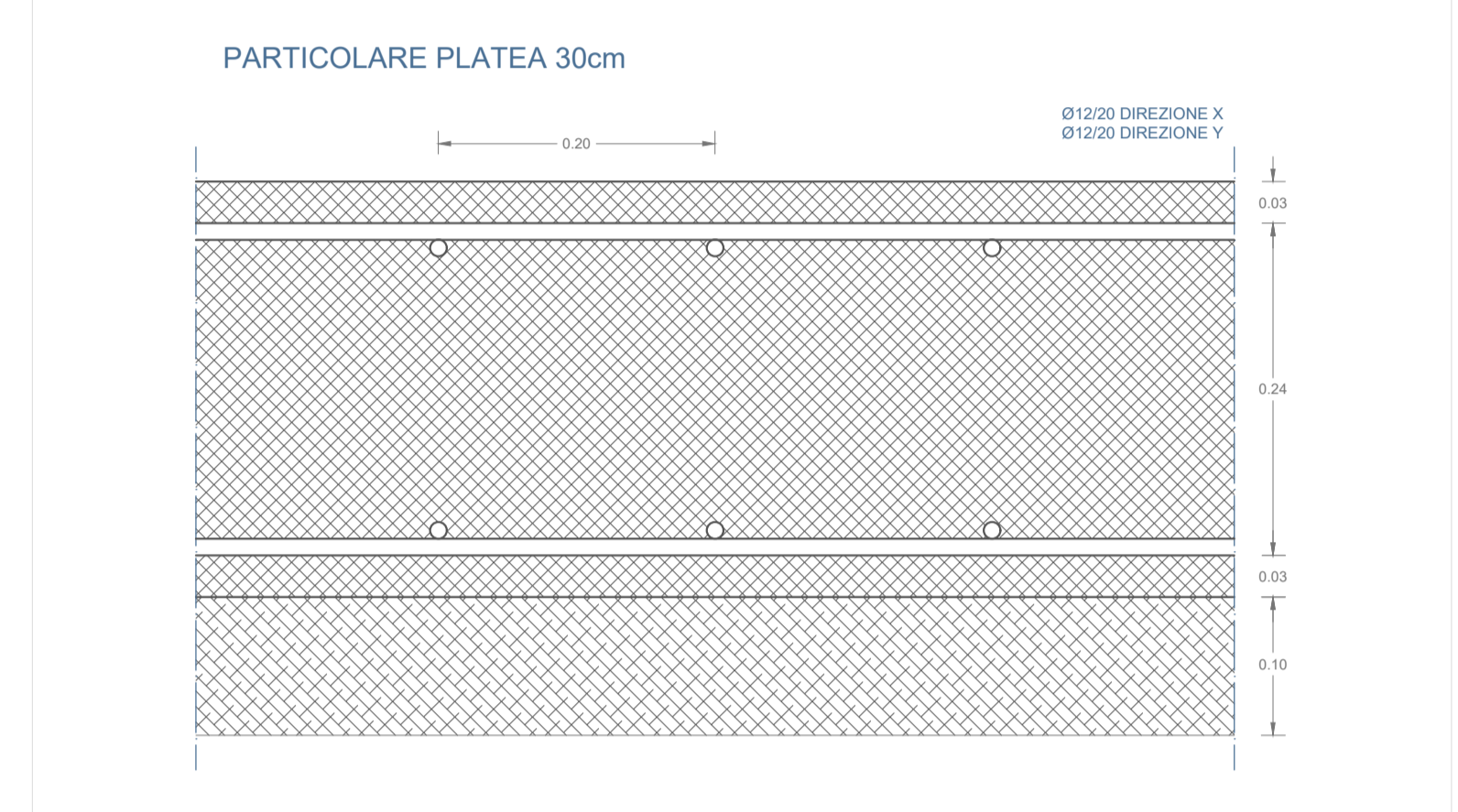
PARTICOLARE DISPOSIZIONE SPILLI NEI SETTI
N°9 SPILLI AL METRO QUADRO
SCALA 1:10



CARATTERISTICHE DEI MATERIALI	PRESCRIZIONI D'OPERA
FONDAZIONI: Plateacalcestruzzo C28/35 acciaio B450C	-Coproferro: 2,5 cm in fondazione ed in elevazione.
ELEVAZIONE: Setti e piastrecalcestruzzo C28/35 acciaio B450C	-Sovrapposizione armature: 40s



PARTICOLARI COSTRUTTIVI SCALE: 1:5



PROGETTO ESECUTIVO
di lavori degli articoli 23 e 43 del D.P.R. 207/2010

IL CONCESSIONARIO

Amme Usl 100
Luigi Campese
Termini Imerese Srl

I PROGETTISTI

PROGCA
Progettazione e Ricerca Grafica
 Ing. Vincenzo Caputo
 Ing. Vincenzo Caputo
 C.G. Ing. Caserta n° 3358

Ing. Domenico Porfida
 Ord. Ing. Caserta n° 2652

Ing. Mario Perri
 Ord. Ing. Caserta n° 4326

TAV S.15 ESECUTIVI STRUTTURALI E PARTICOLARI COSTRUTTIVI
SEPOLTURA DOPPIA

CONTRATTO PER L'AMPLIAMENTO CIMITERO E GESTIONE DEL NUOVO
 E VECCHIO CIMITERO DEL COMUNE DI TERMINI IMERESE
(Contratto di concessione del 27 Settembre 2012 - Rep. A. 10829 - Roc. n. 31)

COMUNE DI TERMINI IMERESE
 Provincia di Palermo

GENNAIO 2019