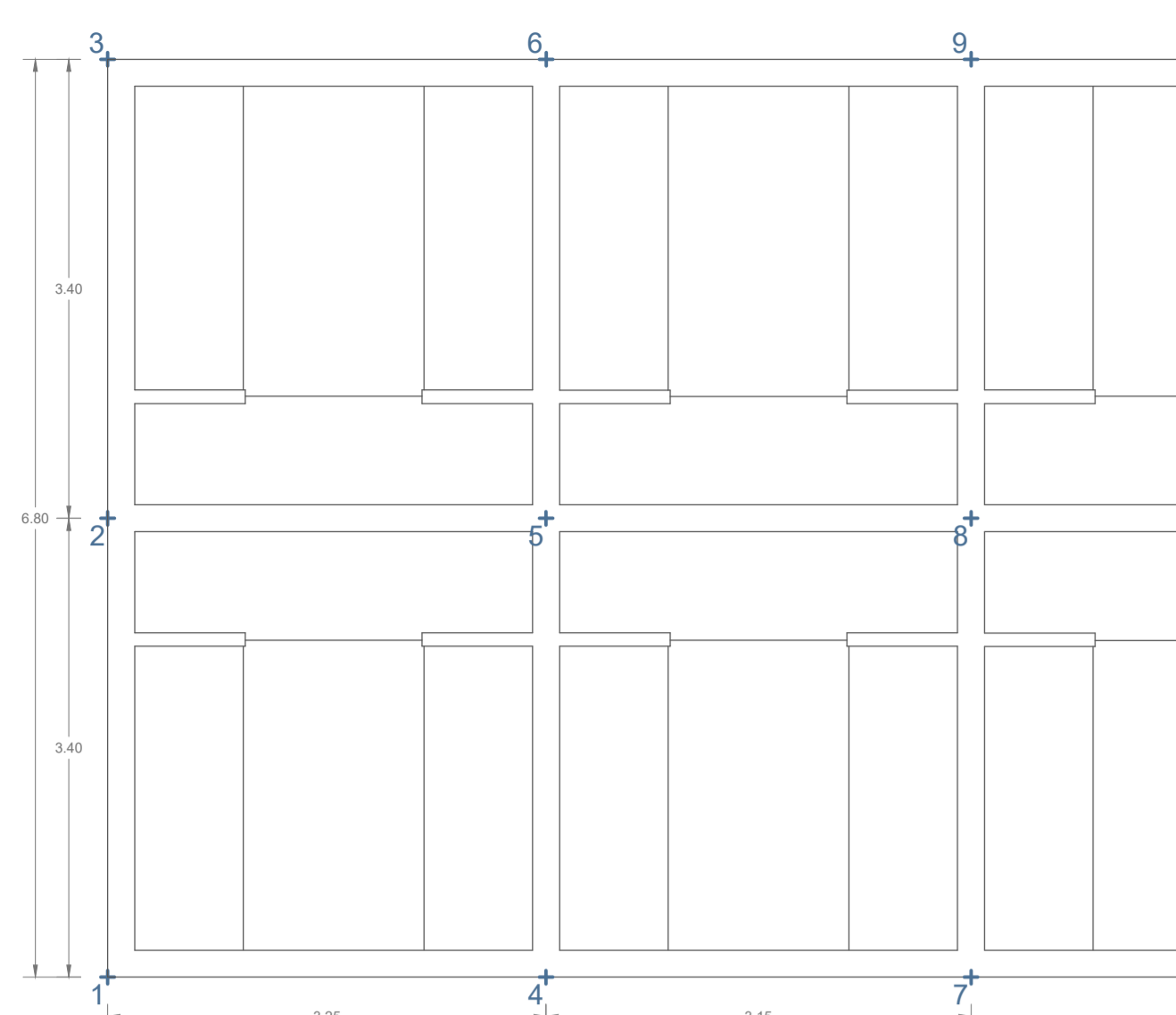
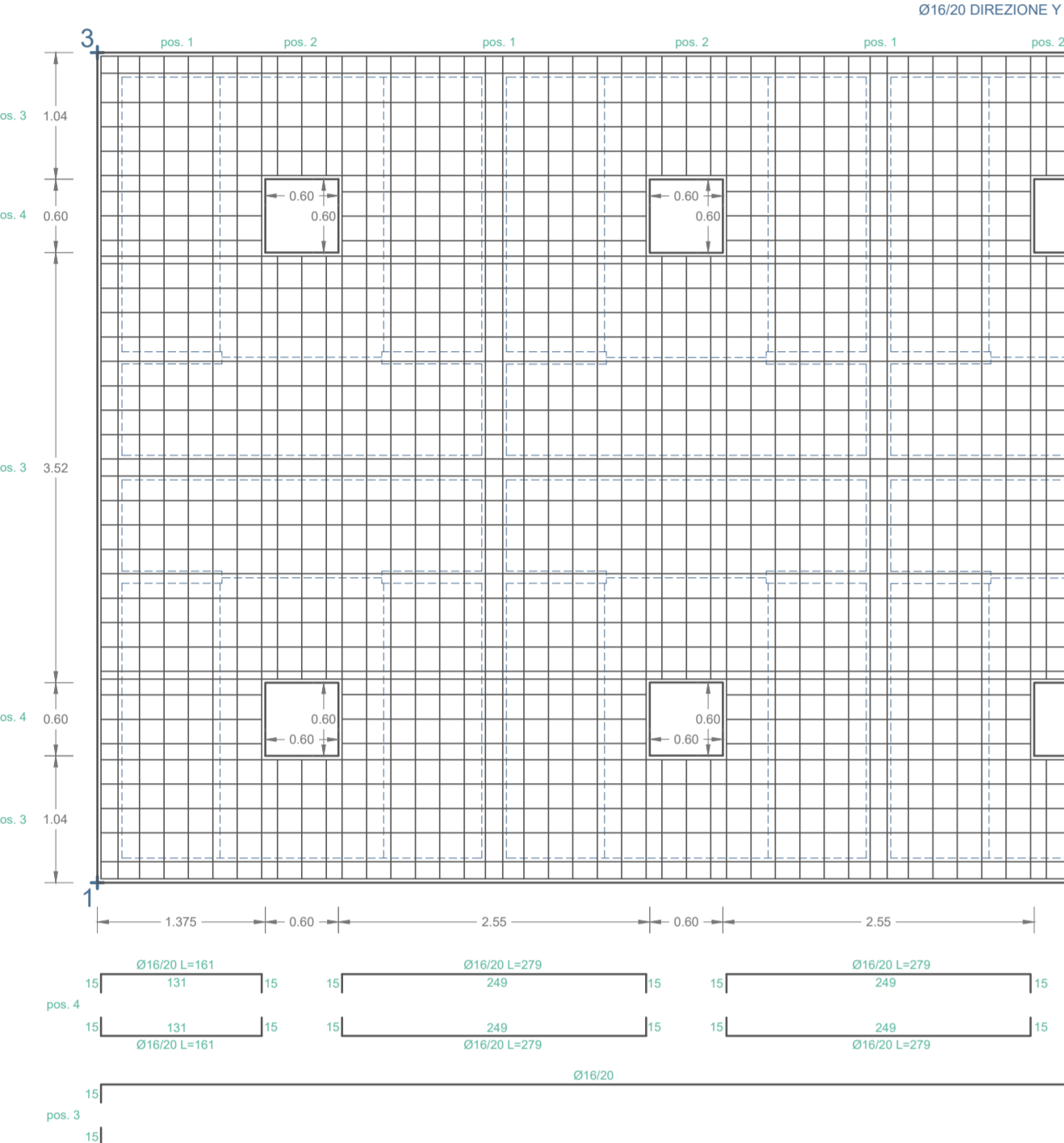


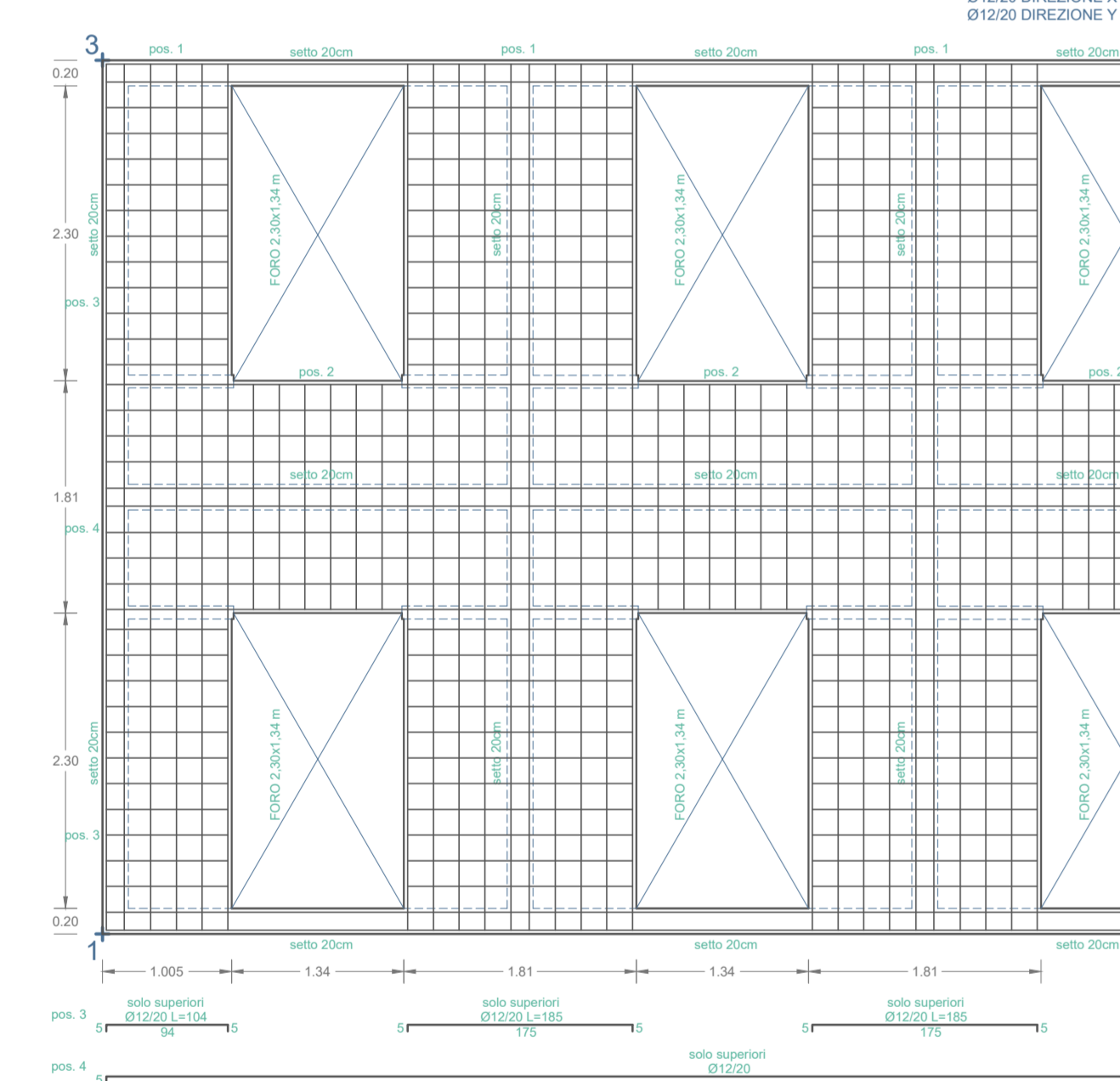
PIANTA FILI FISSI  
SCALA 1:50



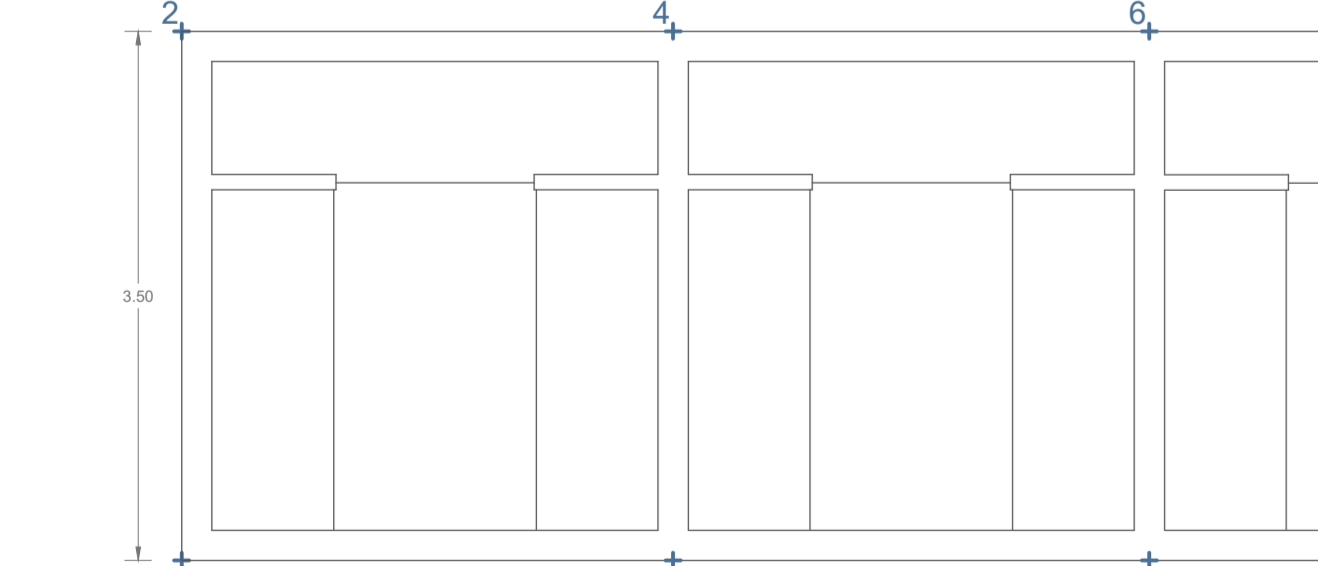
PIANTA FONDAZIONI  
PLATEA h=30cm - quota -3,95m  
SCALA 1:50



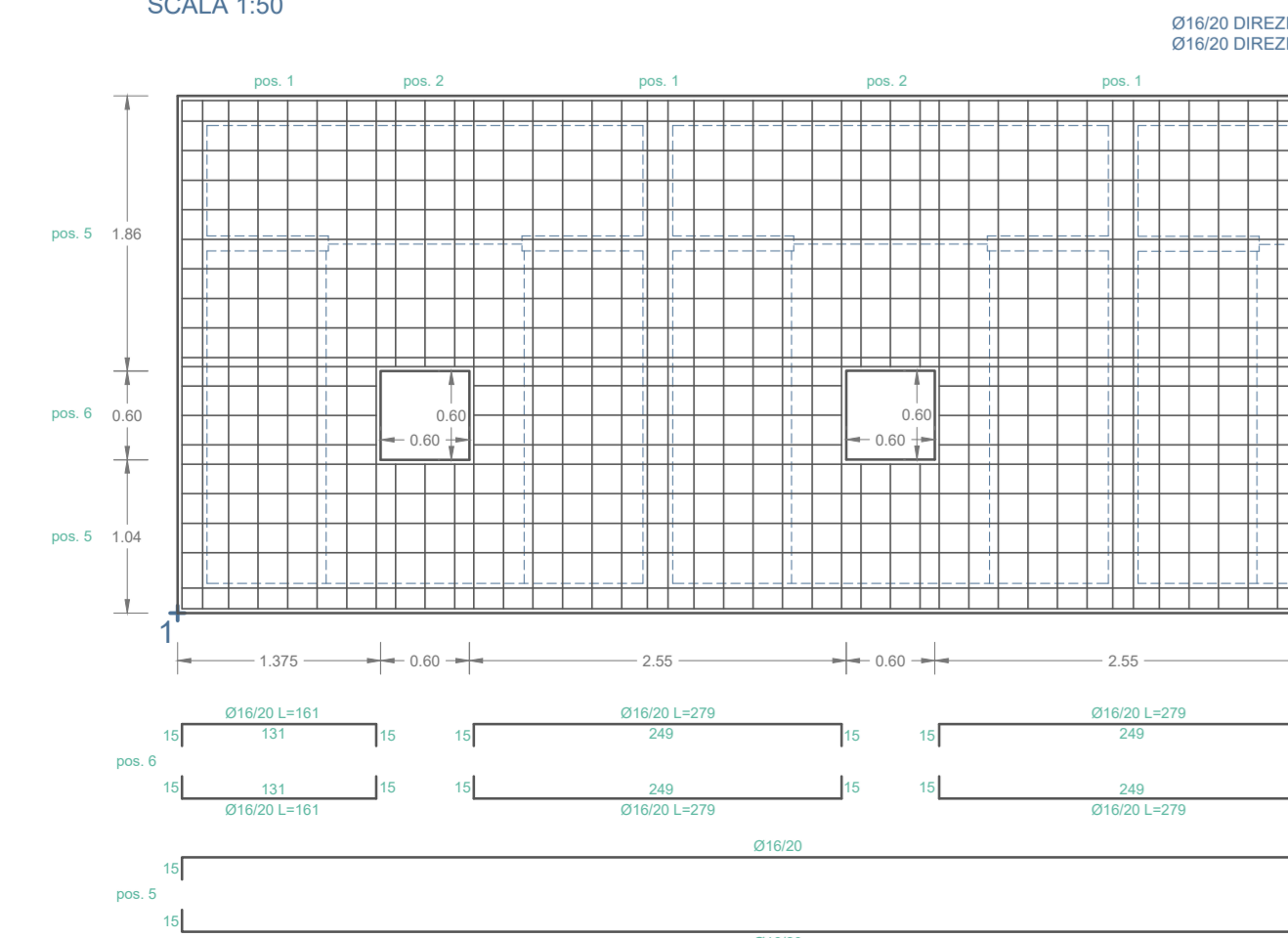
PIASTRE INTERMEDIE  
h=10cm - quote -3,15m; -2,35m; -1,55m; -0,75m  
SCALA 1:50



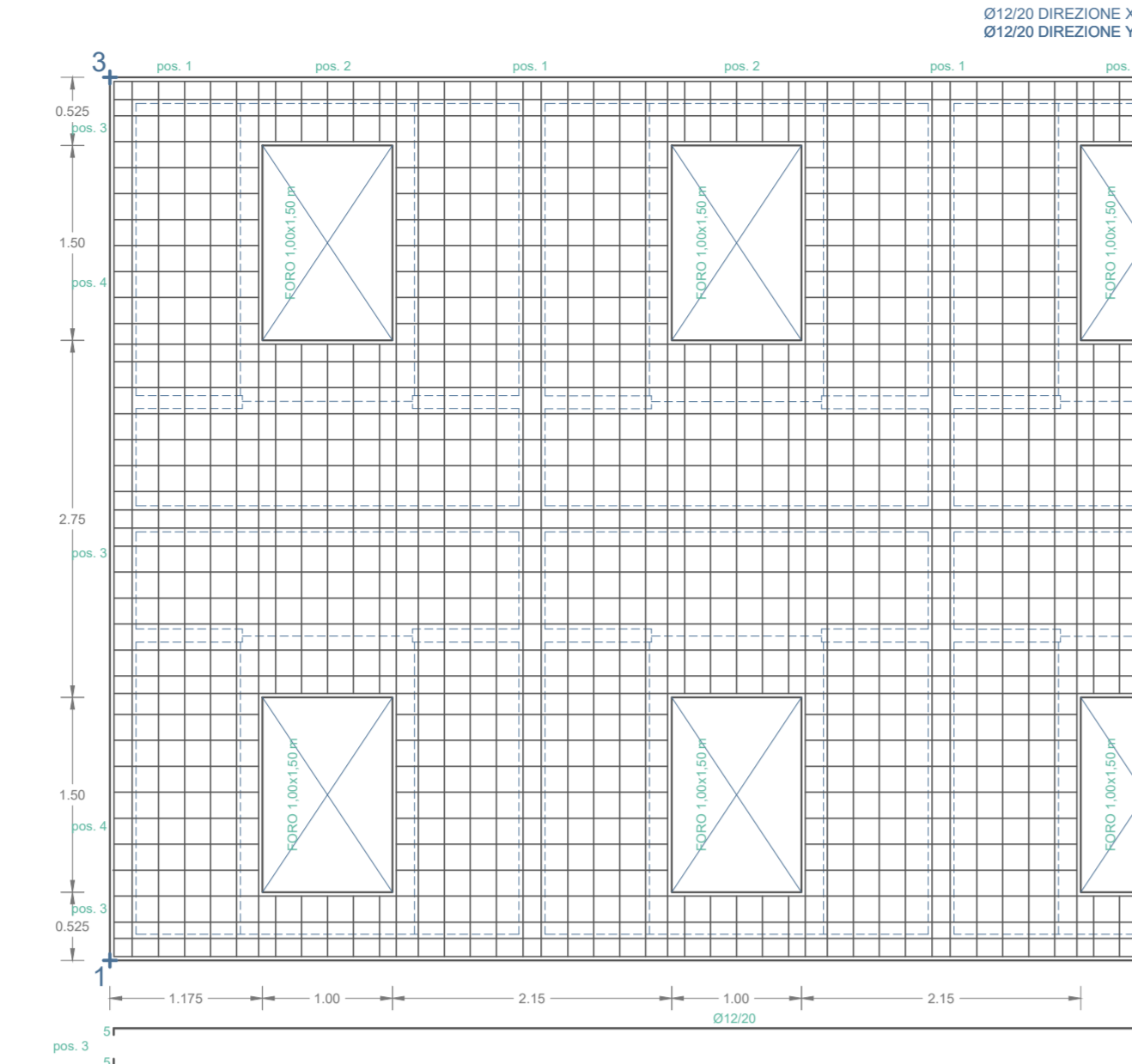
PIANTA FILI FISSI  
SCALA 1:50



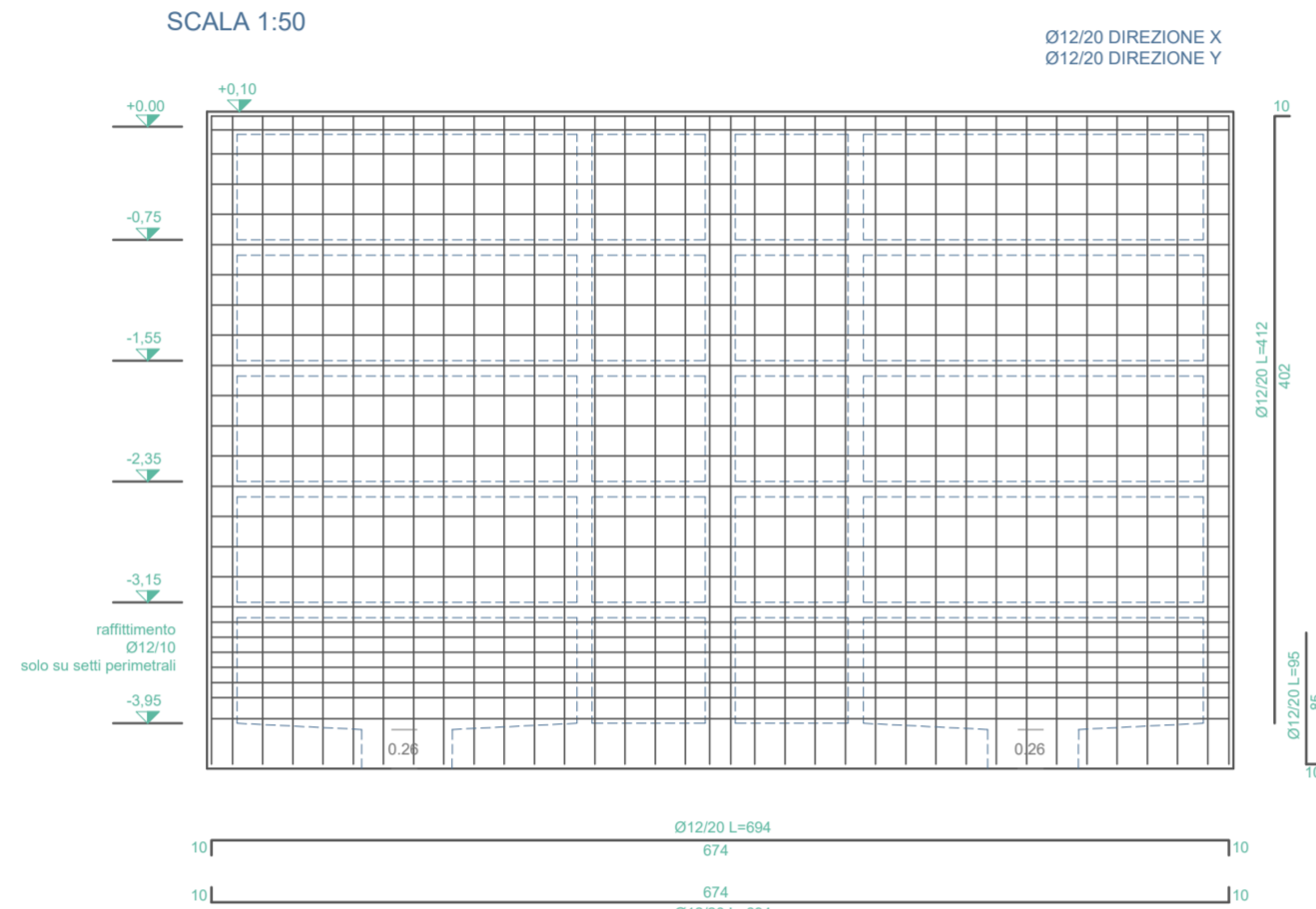
PIANTA FONDAZIONI  
PLATEA h=30cm - quota -3,95m  
SCALA 1:50



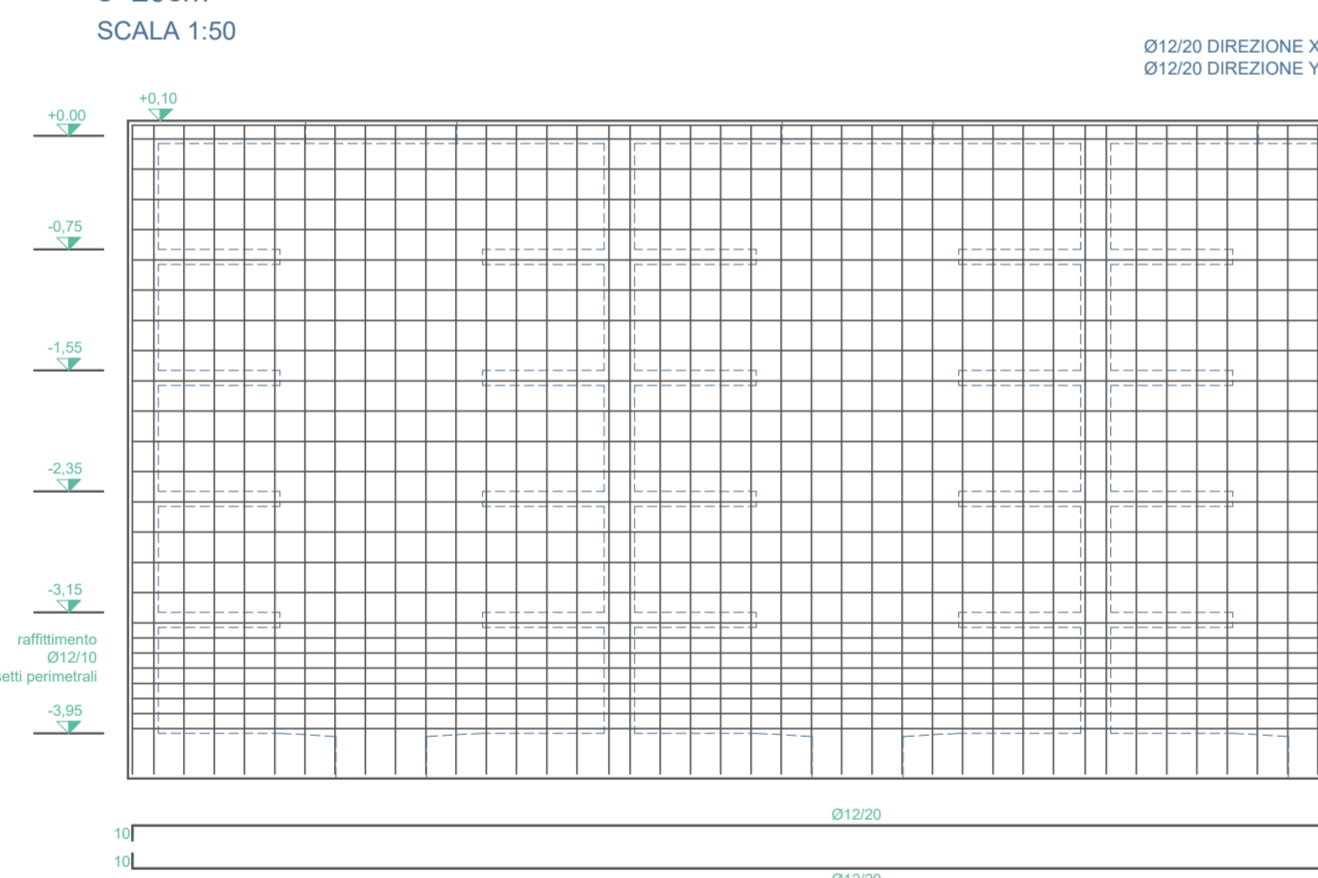
PIASTRA COPERTURA  
h=15cm - quota +0,10m  
SCALA 1:50



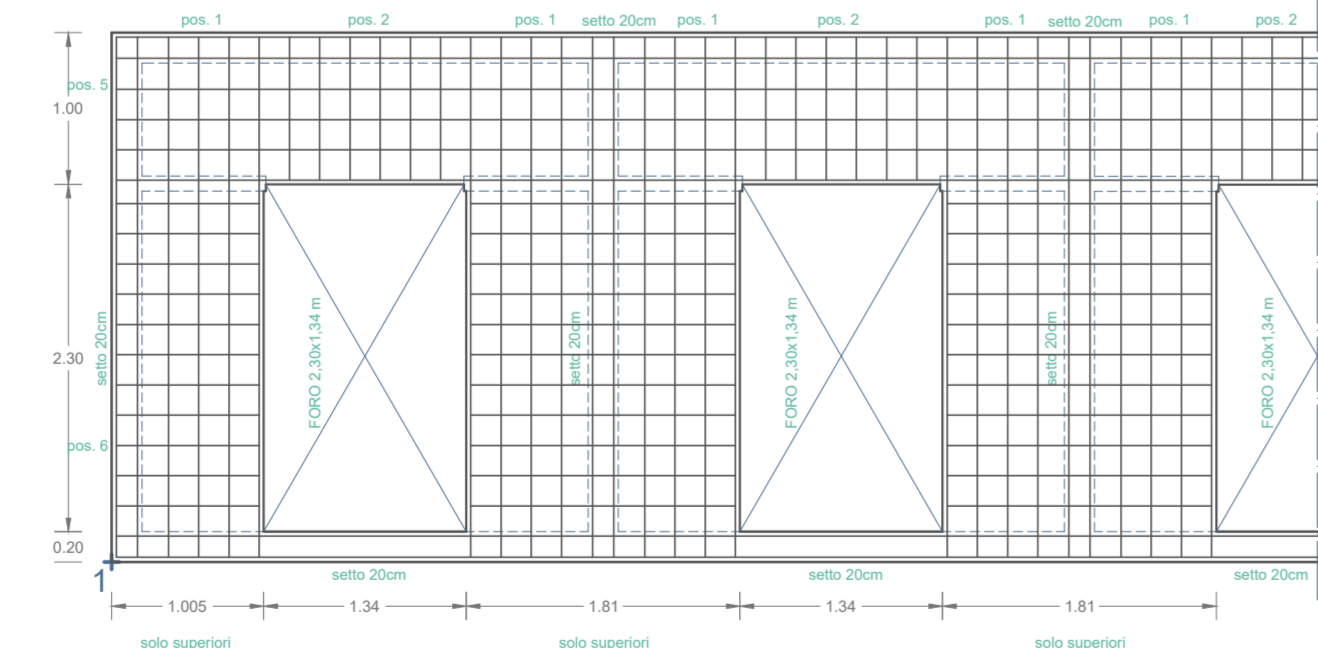
SETTO LATO CORTO  
s=20cm  
SCALA 1:50



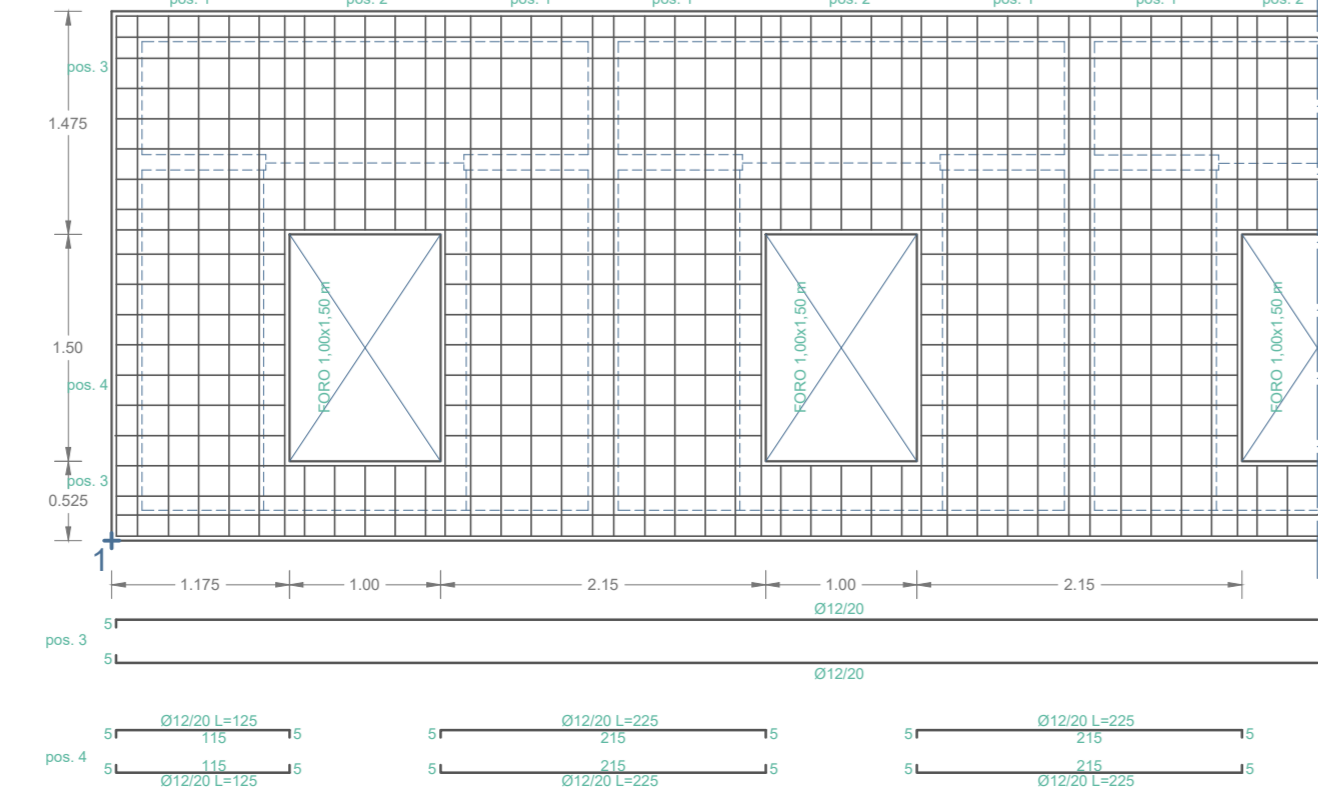
SETTO LUNGO  
s=20cm  
SCALA 1:50



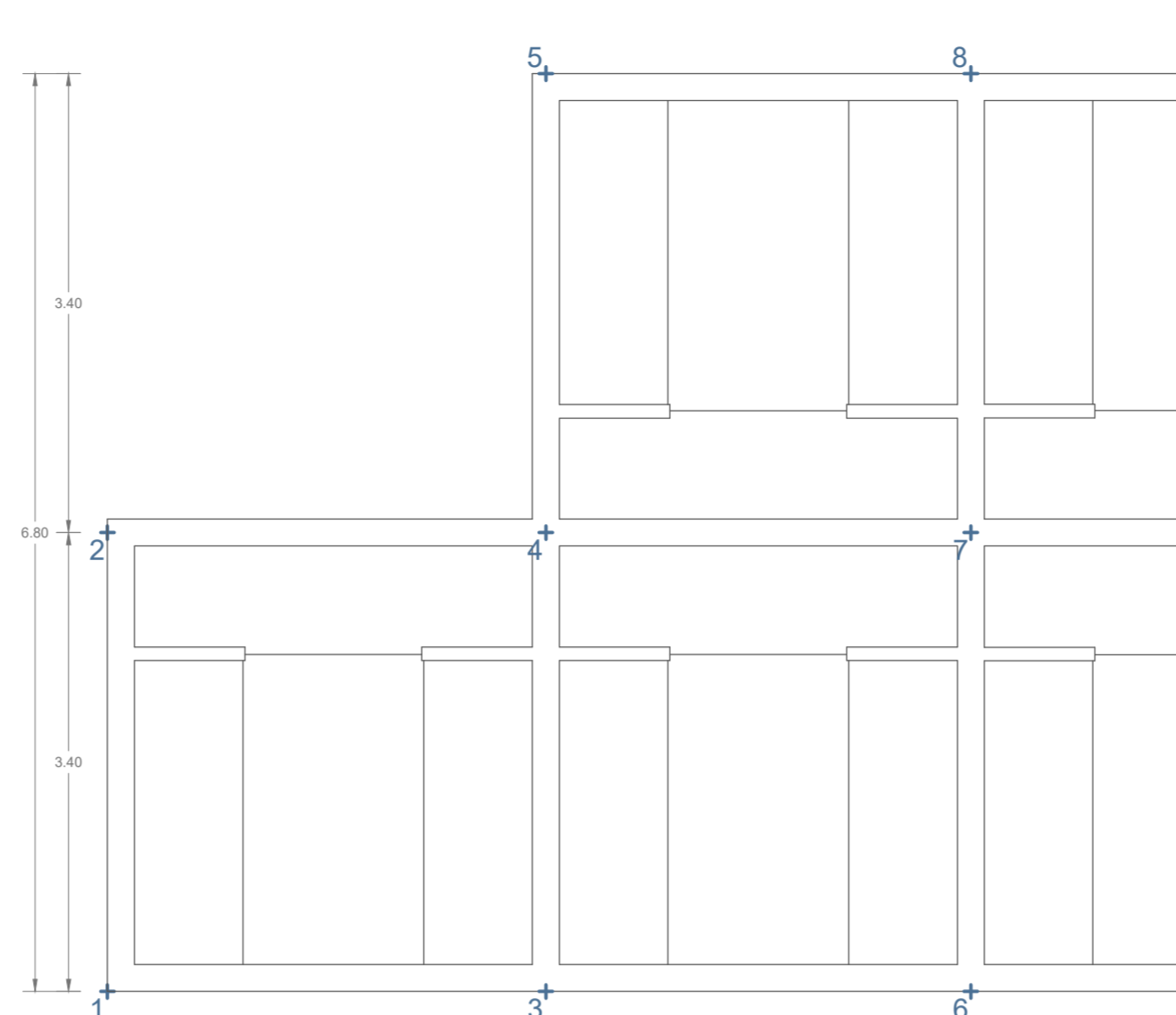
PIASTRE INTERMEDIE  
h=10cm - quote -3,15m; -2,35m; -1,55m; -0,75m  
SCALA 1:50



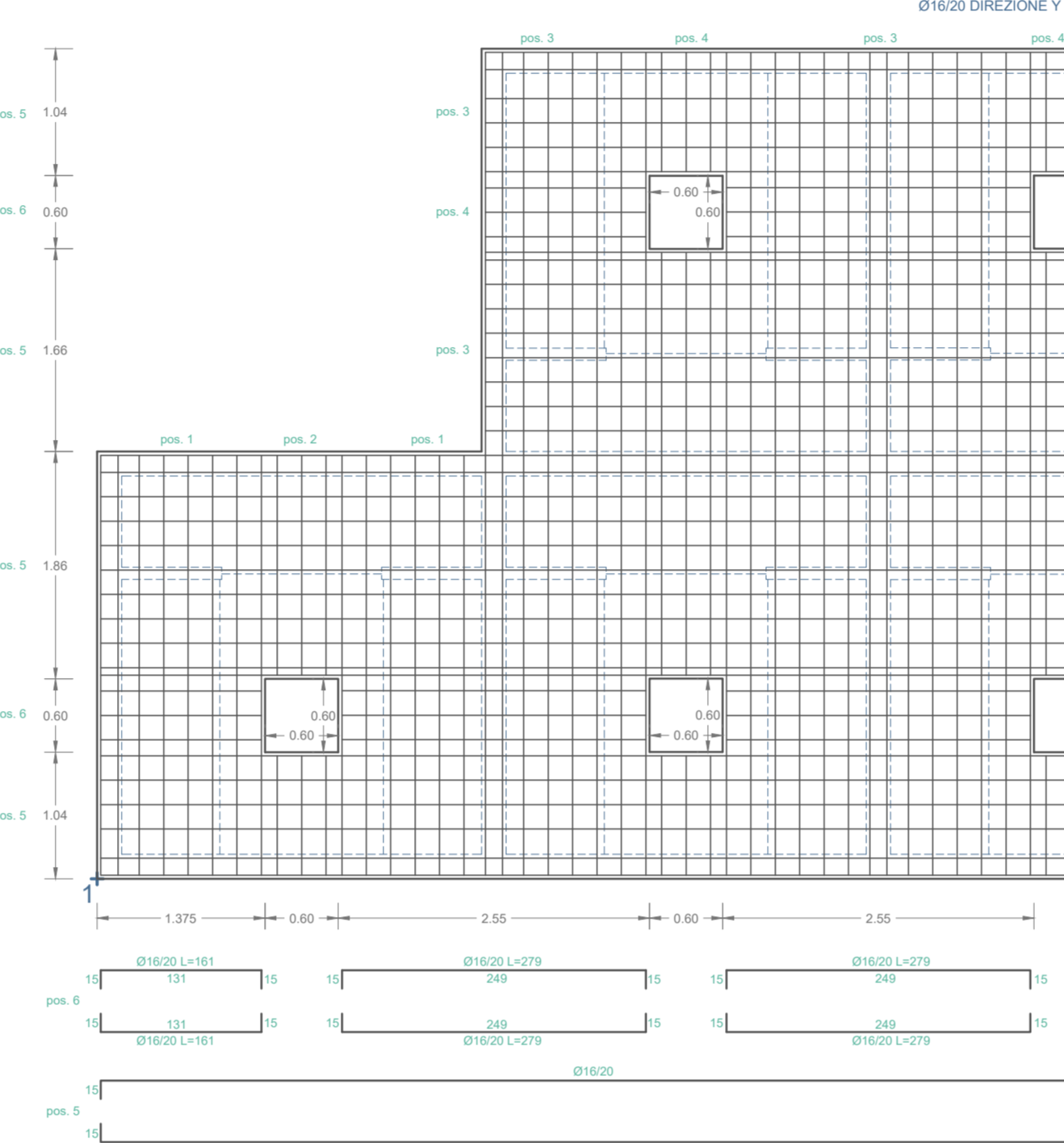
PIASTRA COPERTURA  
h=15cm - quota +0,10m  
SCALA 1:50



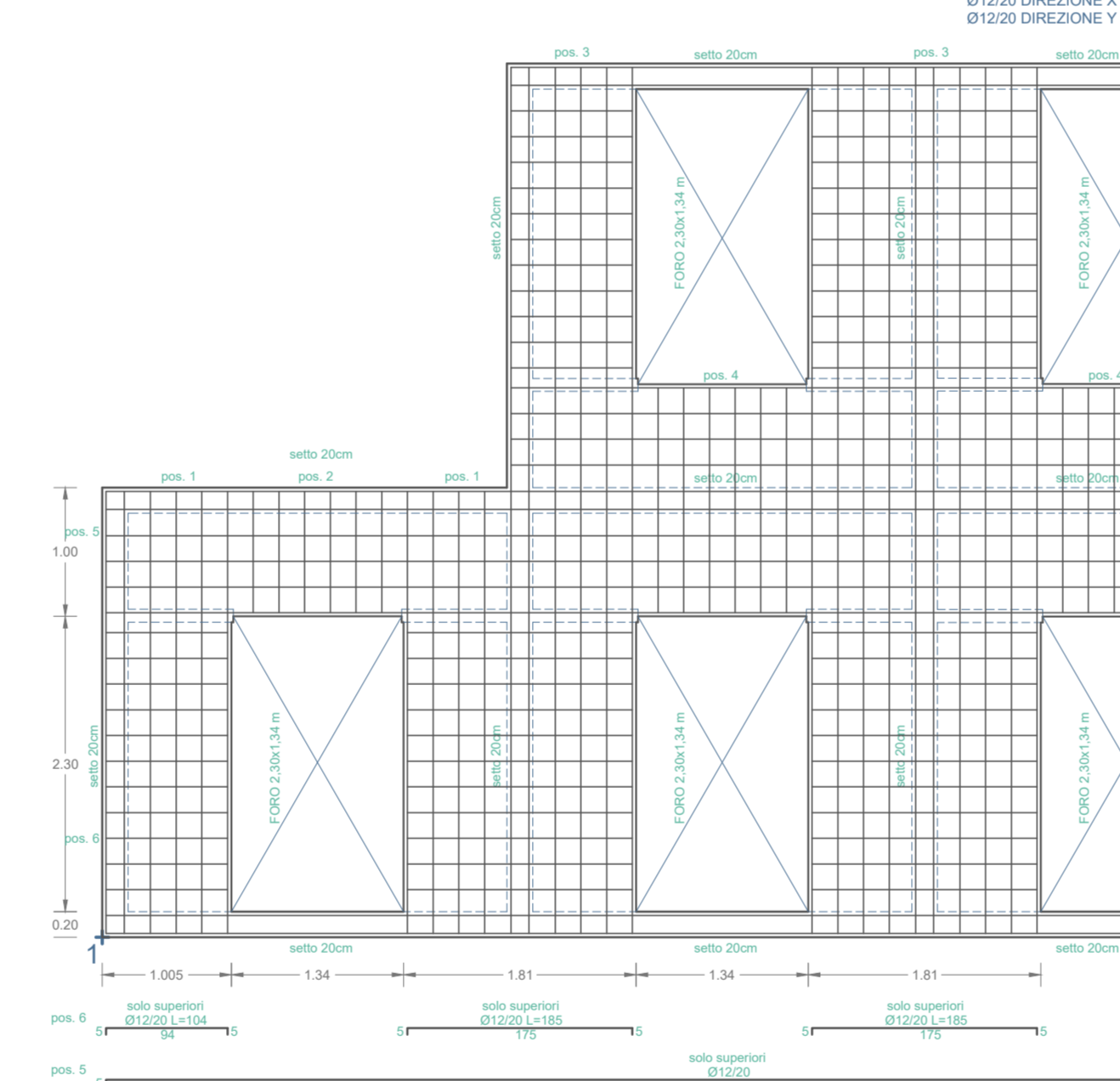
PIANTA FILI FISSI  
SCALA 1:50



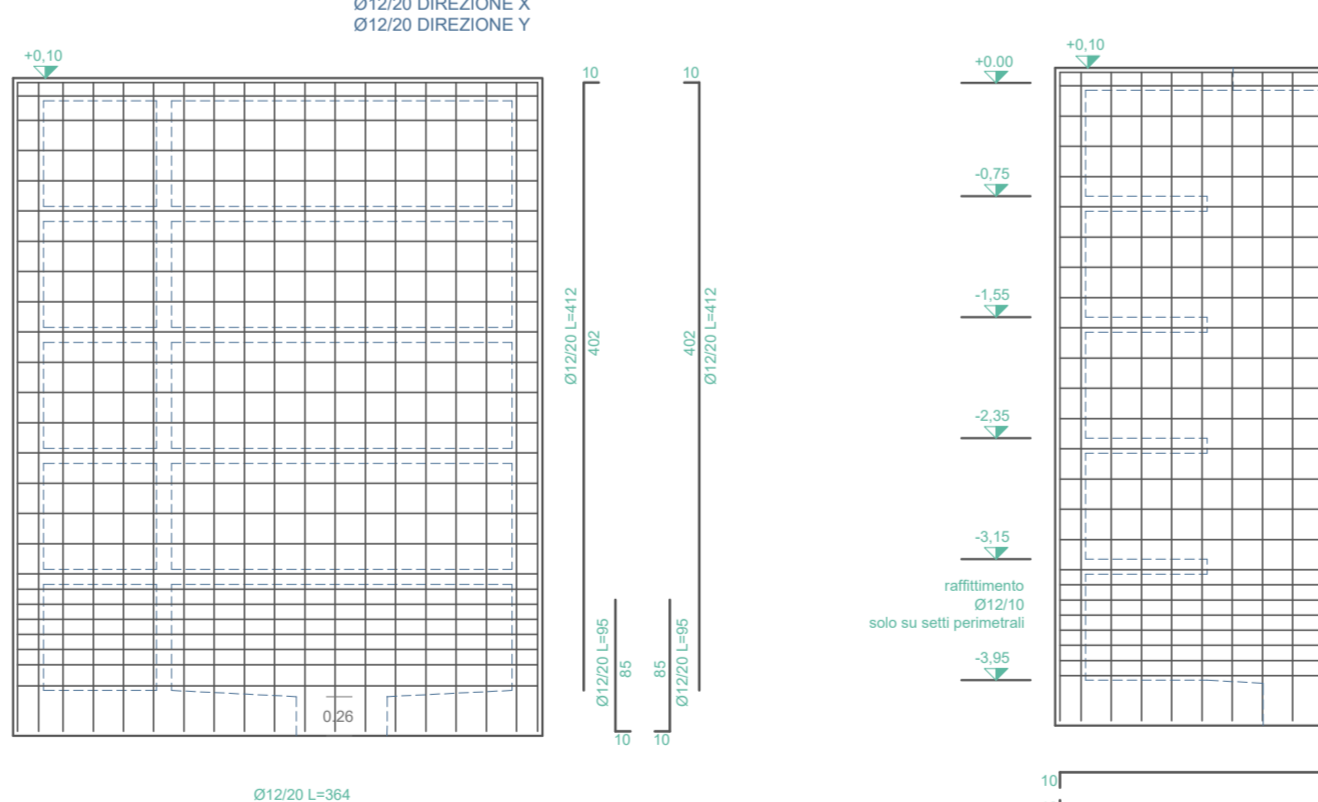
PIANTA FONDAZIONI  
PLATEA h=30cm - quota -3,95m  
SCALA 1:50



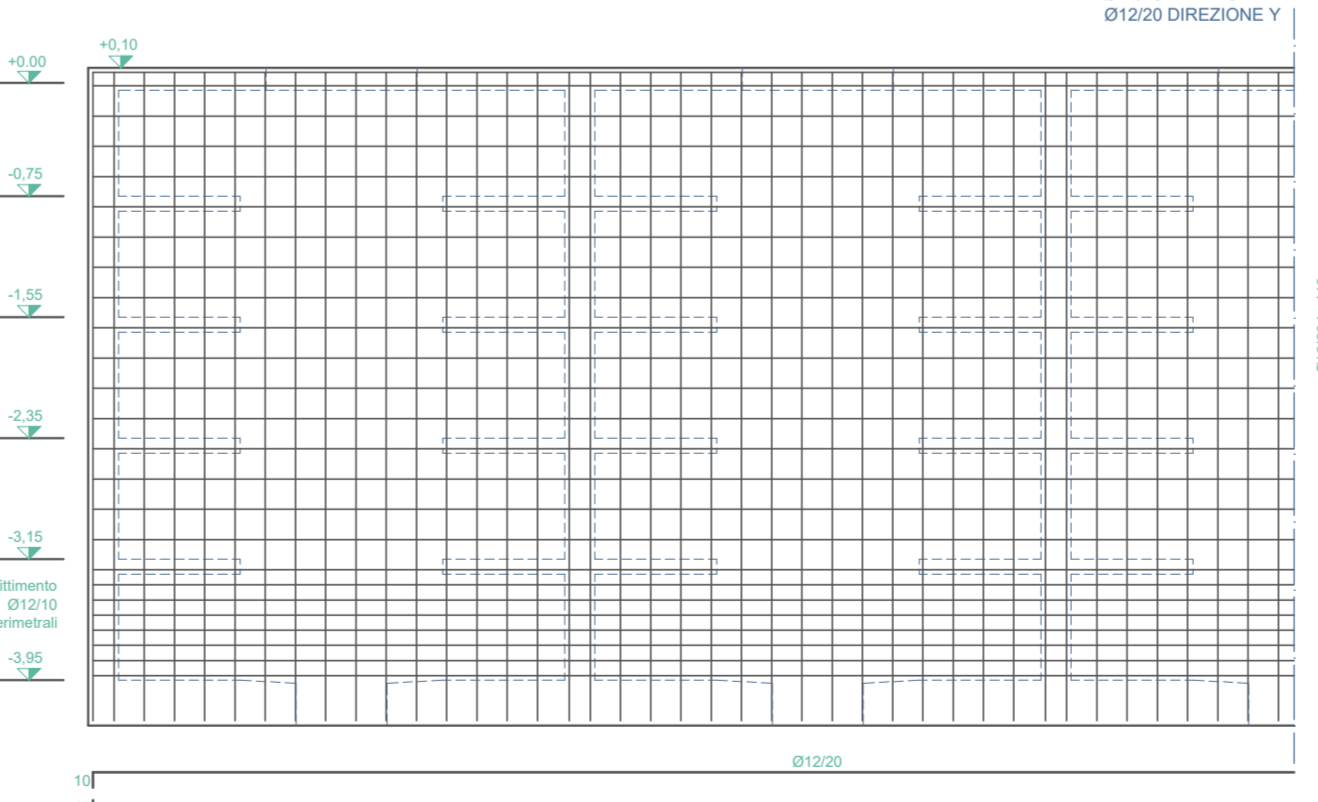
PIASTRE INTERMEDIE  
h=10cm - quote -3,15m; -2,35m; -1,55m; -0,75m  
SCALA 1:50



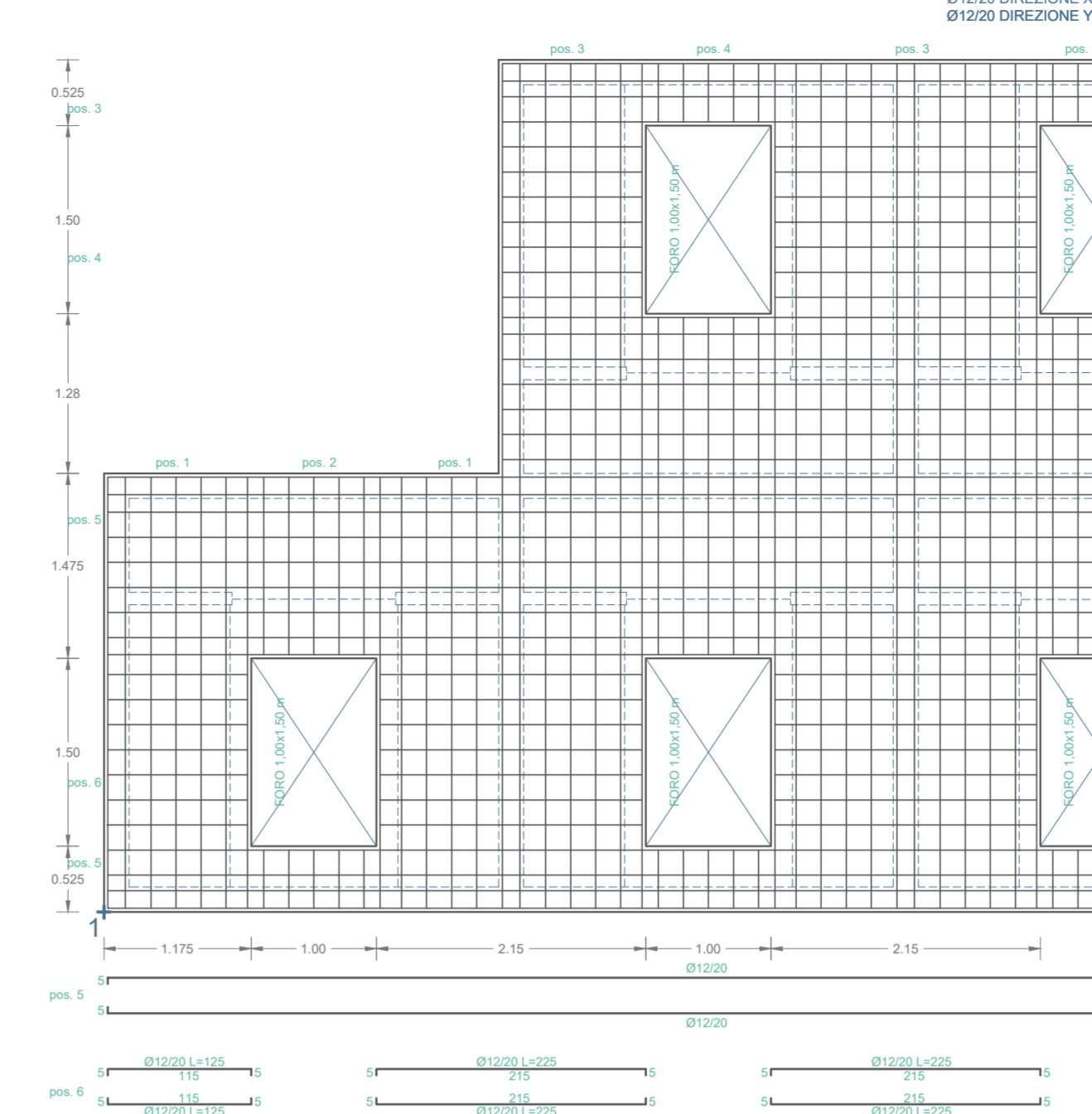
SETTO LATO CORTO  
s=20cm  
SCALA 1:50



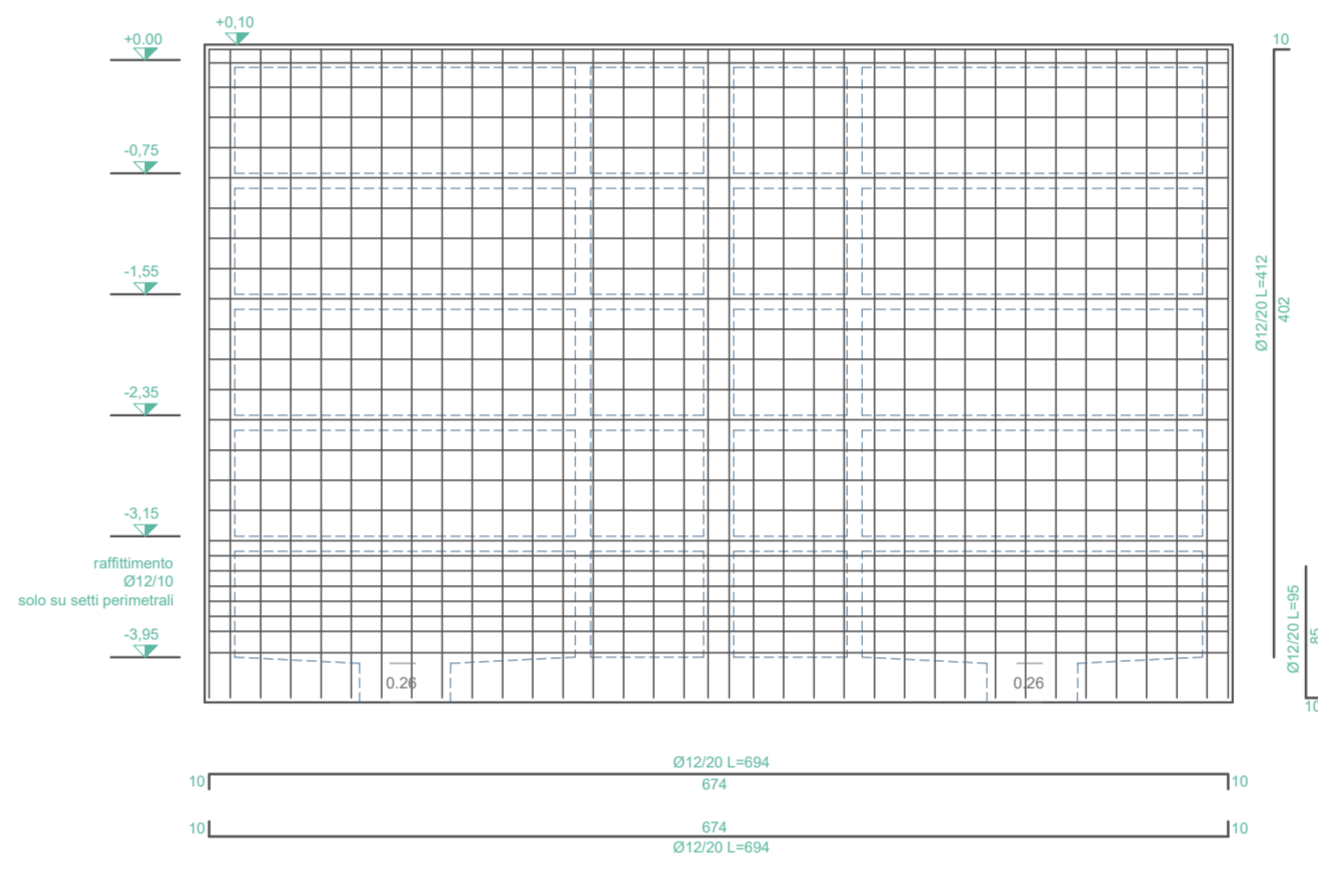
SETTO LUNGO  
s=20cm  
SCALA 1:50



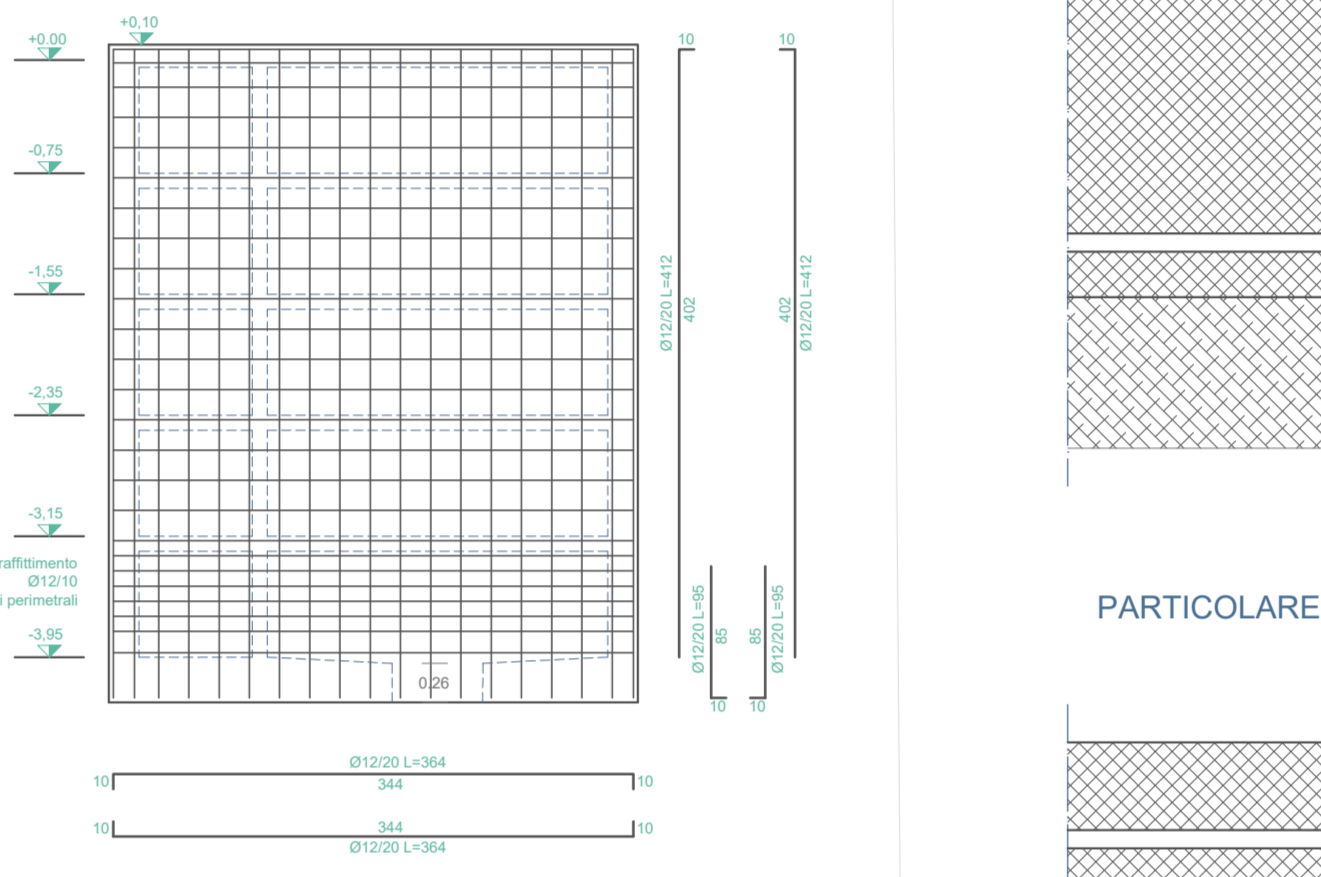
PIASTRA COPERTURA  
h=15cm - quota +0,10m  
SCALA 1:50



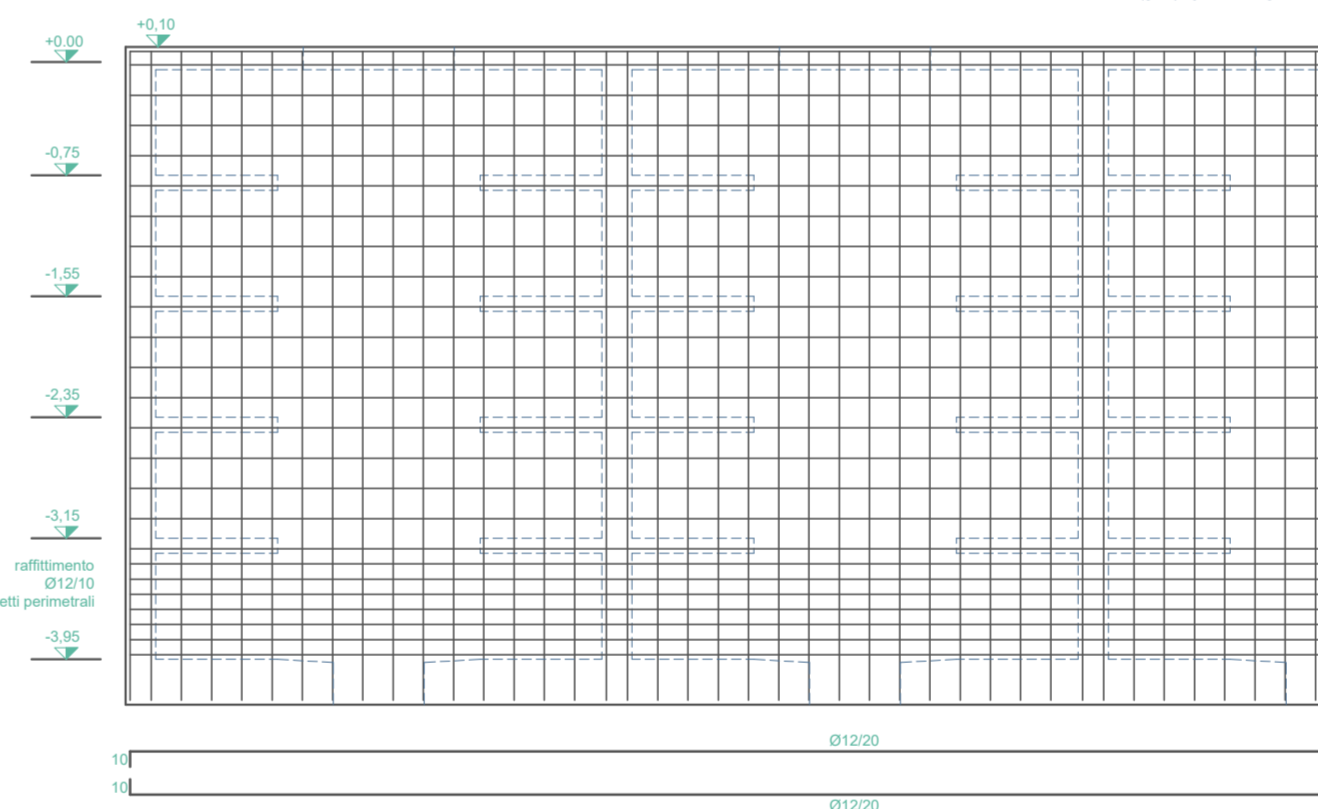
SETTO LATO CORTO  
s=20cm  
SCALA 1:50



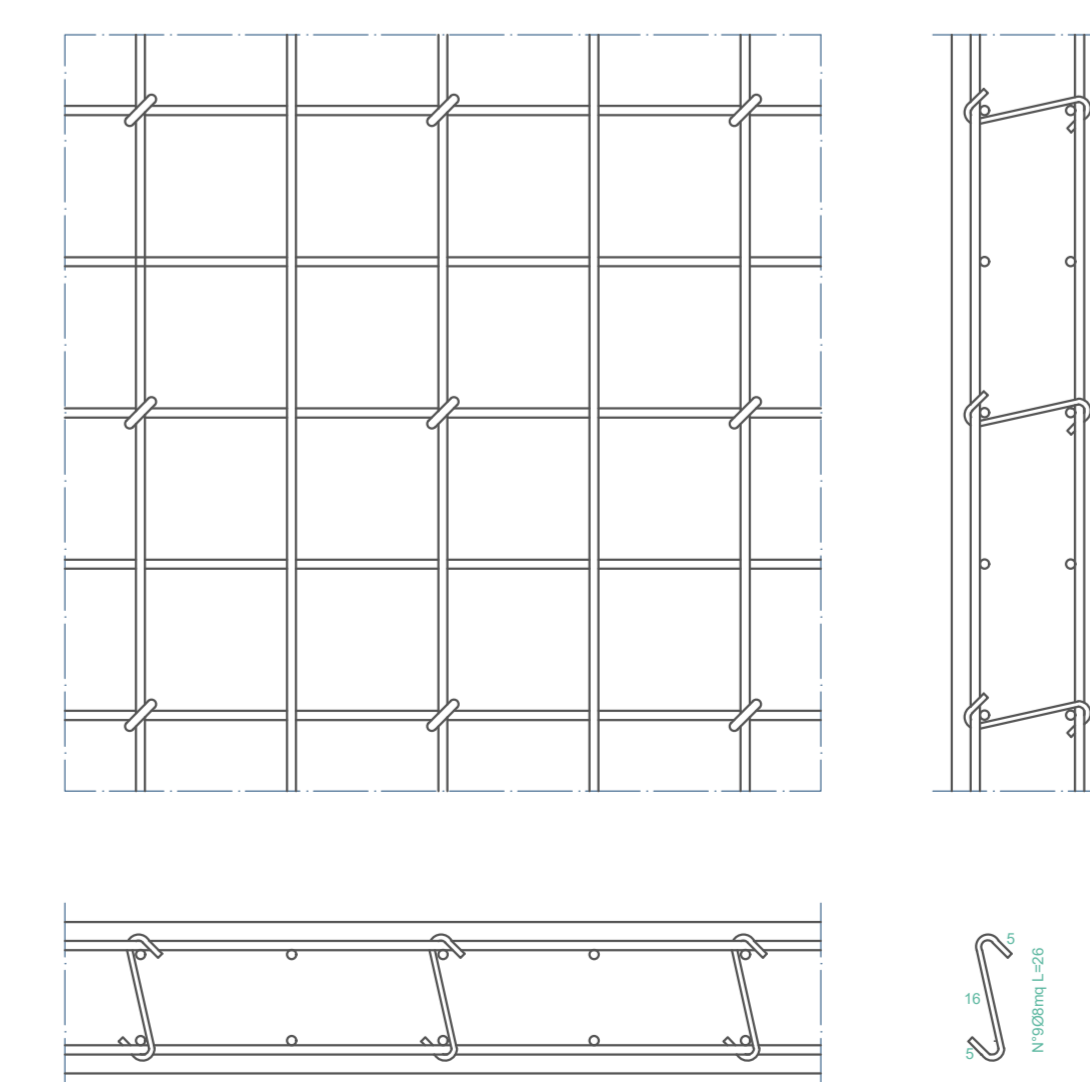
SETTO LATO CORTO  
s=20cm  
SCALA 1:50



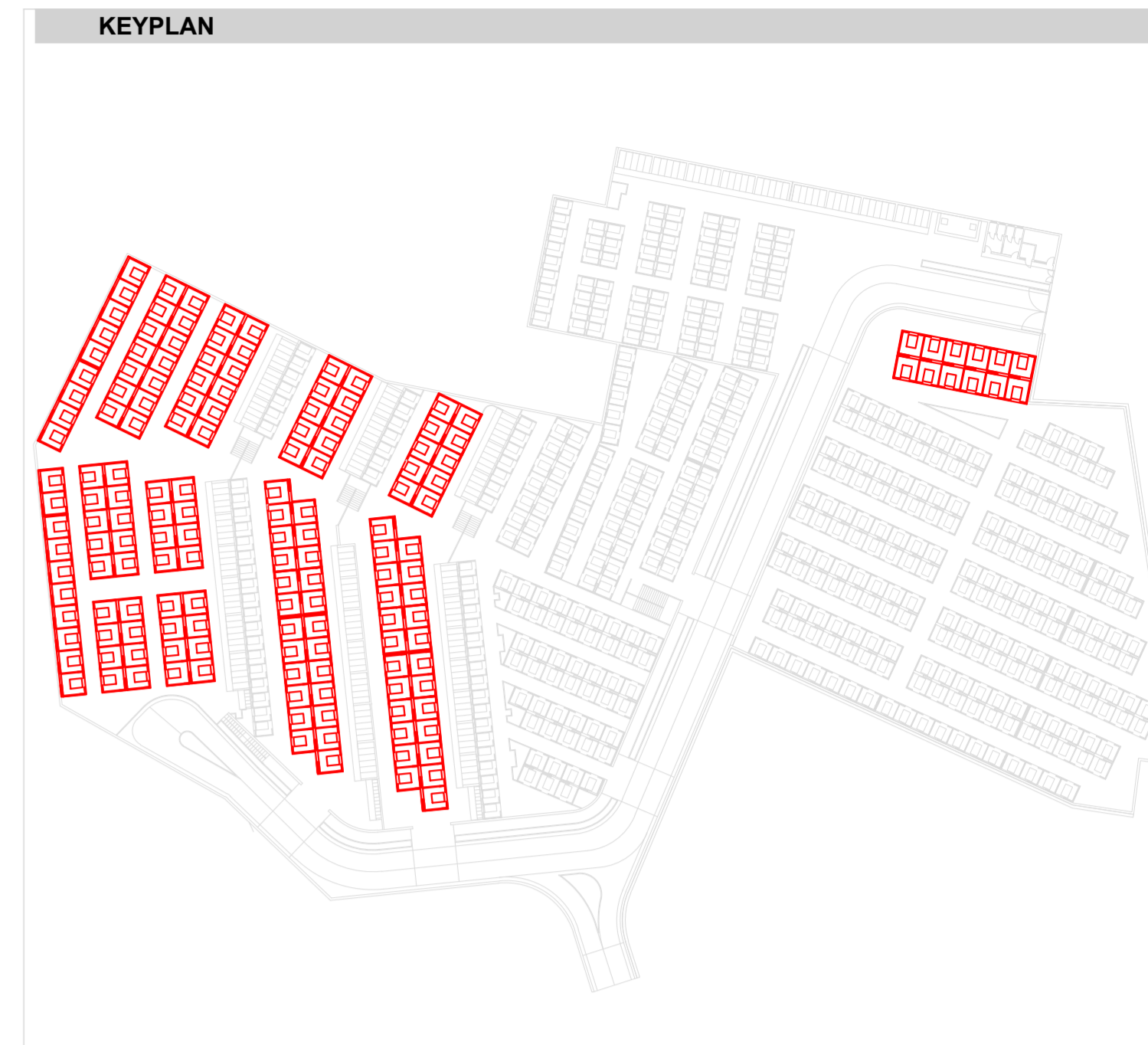
SETTO LUNGO  
s=20cm  
SCALA 1:50



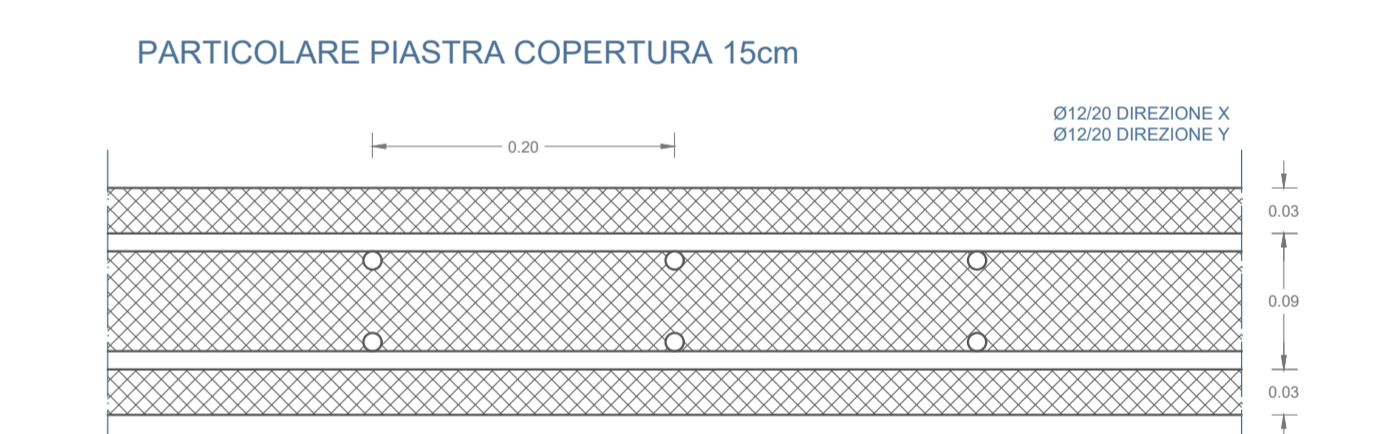
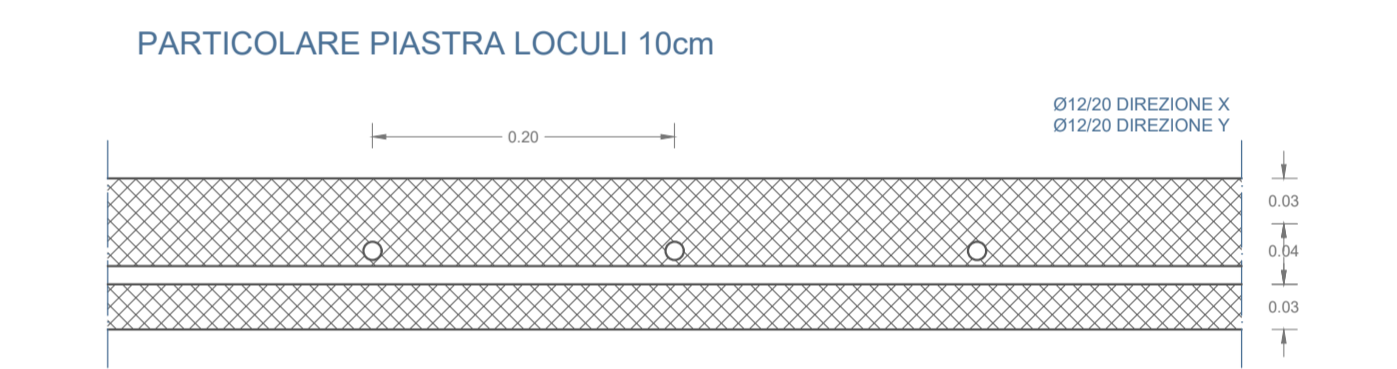
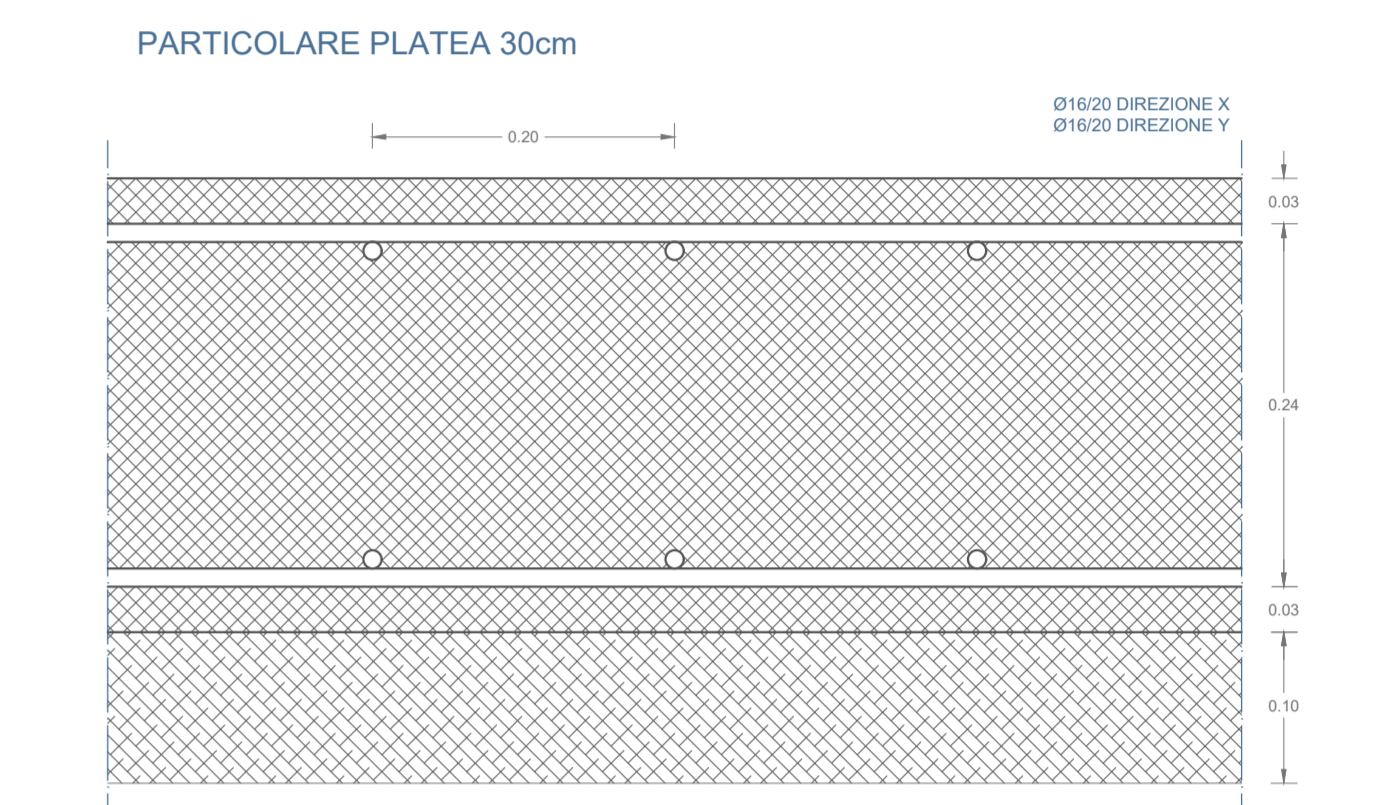
PARTICOLARE DISPOSIZIONE SPILLI NEI SETTI  
N°3 SPILLI AL METRO QUADRO  
SCALA 1:10



CARATTERISTICHE DEI MATERIALI	PRESCRIZIONI D' OPERA
FONDAZIONI: Platea ..... calcestruzzo C28/35 acciaio B450C	-Copriferro: 2,5 cm in fondazione ed in elevazione.
ELEVAZIONE: Setti e piastre ..... calcestruzzo C28/35 acciaio B450C	-Sovrapposizione armature: 40s



PARTICOLARI COSTRUTTIVI SCALE: 1:5



**PROGETTO ESECUTIVO**  
ai sensi degli articoli da 33 a 41 del D.P.R. 207/2010

**IL CONCESSIONARIO**

Service  
Termini Imerese Srl  
Amministratore Unico  
Luigi Cantone

**I PROGETTISTI**

**PROGECA**  
Ingegneria  
Architettura  
Urbanistica  
Vincenzo Caputo  
Ing. Vincenzo Caputo  
C.F. Ing. Caserta n° 4358

Ing. Domenico Portida  
Ord. Ing. Caserta n° 2652

Ing. Mario Parrì  
Ord. Ing. Caserta n° 4328

**TAV**  
S.16

**ESECUTIVI STRUTTURALI E PARTICOLARI COSTRUTTIVI**  
**SEPOLTURA GENTILIZIA**

**COMUNE DI TERMINI IMERESE**  
Provincia di Palermo

CONTRATTO PER L'AMPLIAMENTO CIMITERO E GESTIONE DEL NUOVO E VECCHIO CIMITERO DEL COMUNE DI TERMINI IMERESE  
(Contratto di concessione del 27 Settembre 2012 - Rep. n. 10829 - Racc. n. 31)

GENNAIO  
2019