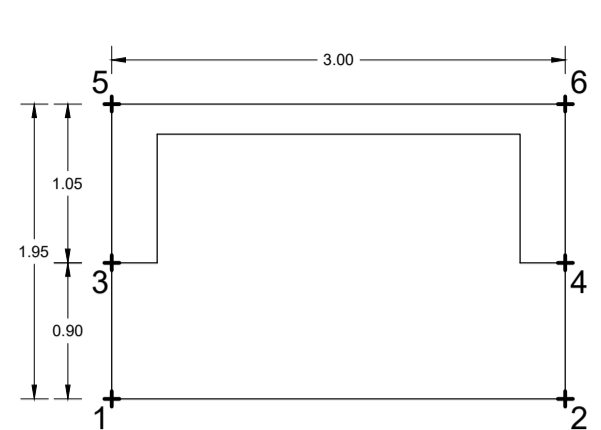
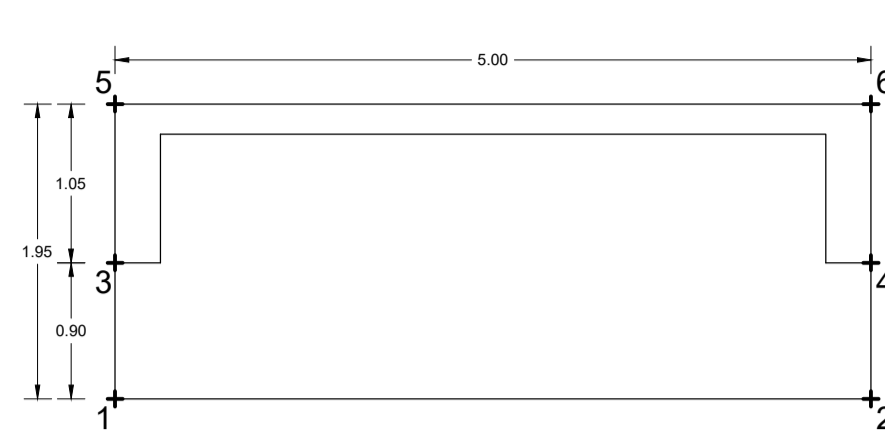


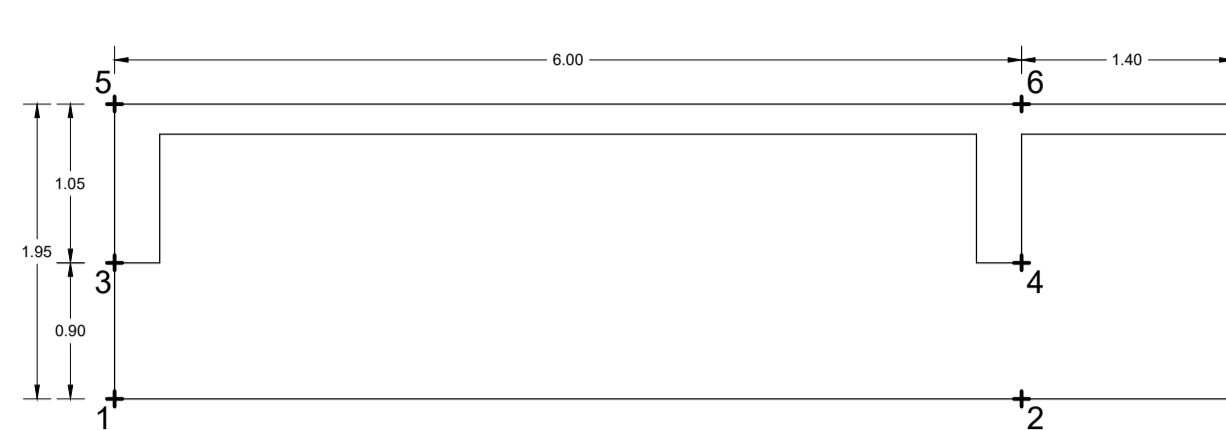
PIANTA FILI FISSI
SCALA 1:50



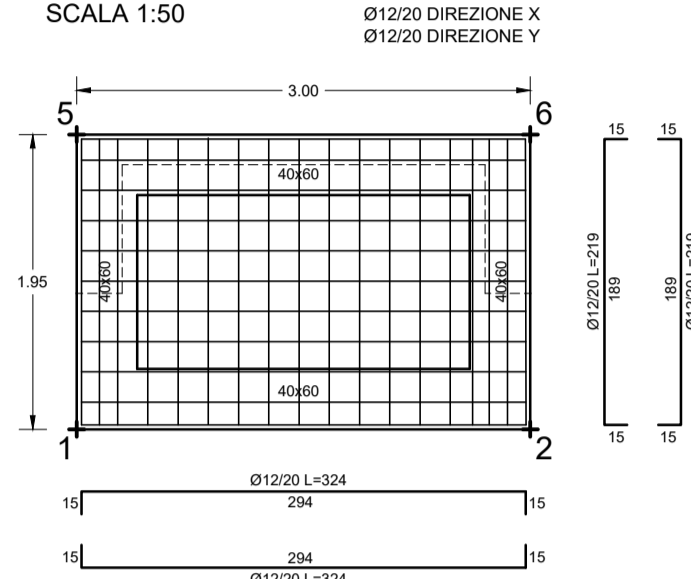
PIANTA FILI FISSI
SCALA 1:50



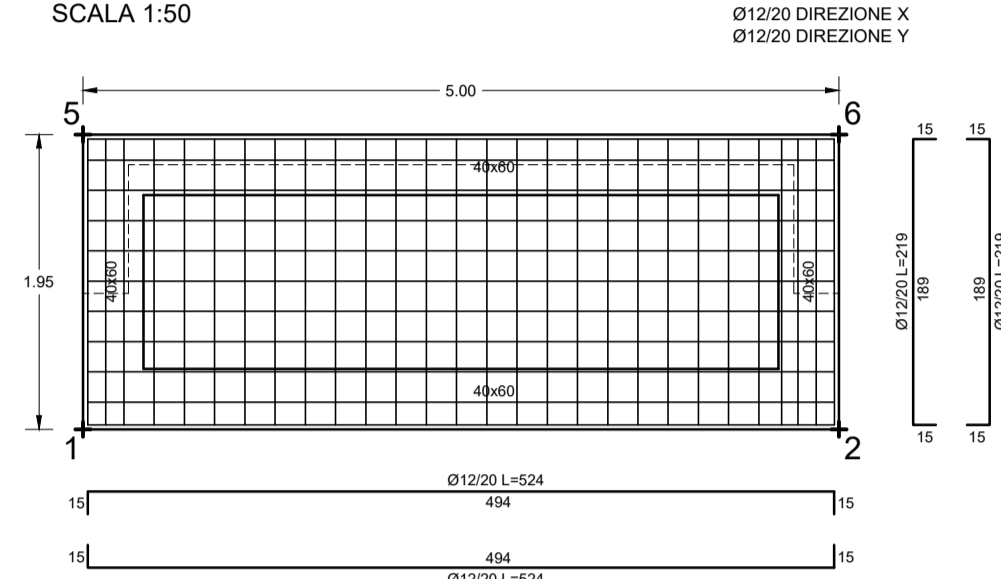
PIANTA FILI FISSI
SCALA 1:50



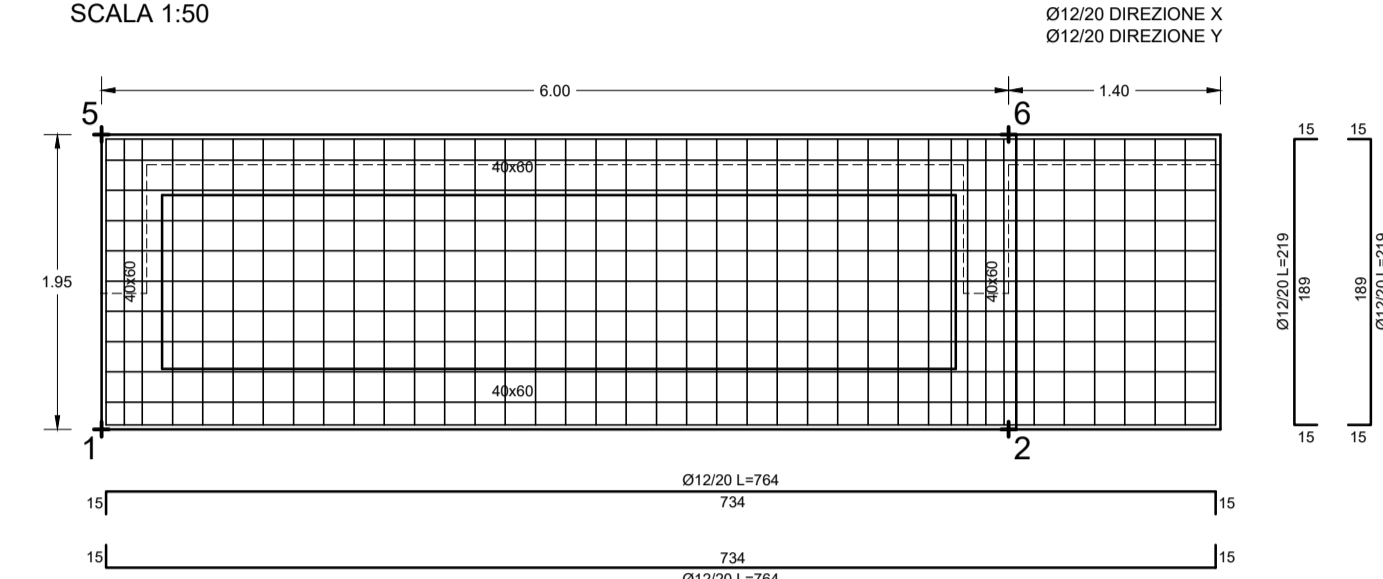
PIANTA FONDAZIONI
PLATEA h=30cm - quota -0,10m
SCALA 1:50



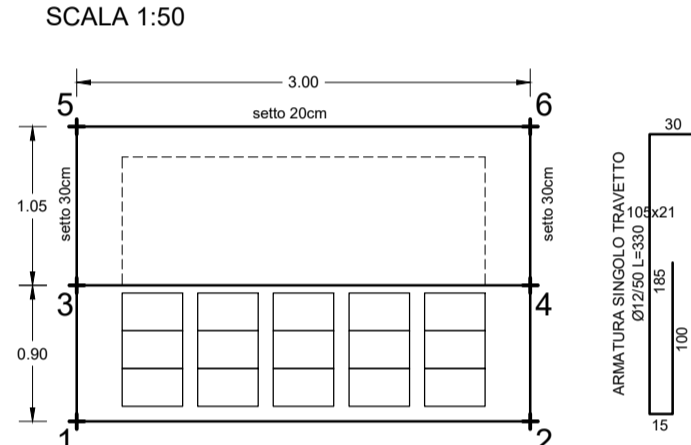
PIANTA FONDAZIONI
PLATEA h=30cm - quota -0,10m
SCALA 1:50



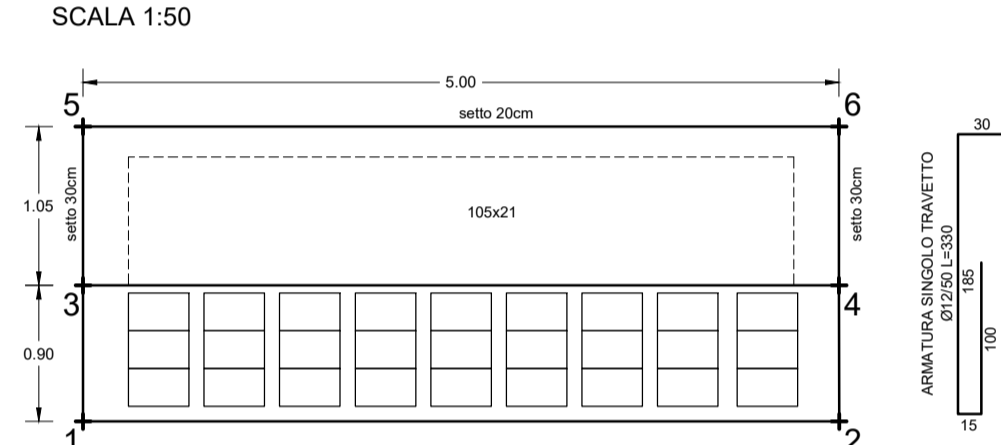
PIANTA FONDAZIONI
PLATEA h=30cm - quota -0,10m
SCALA 1:50



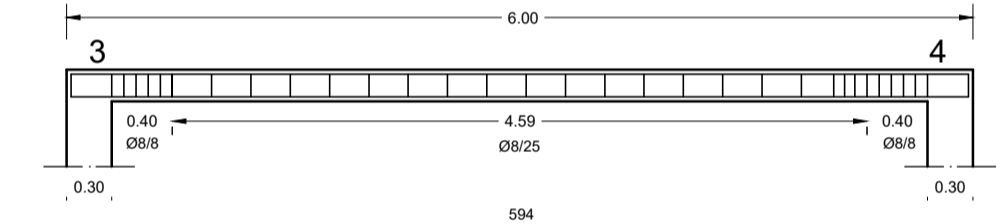
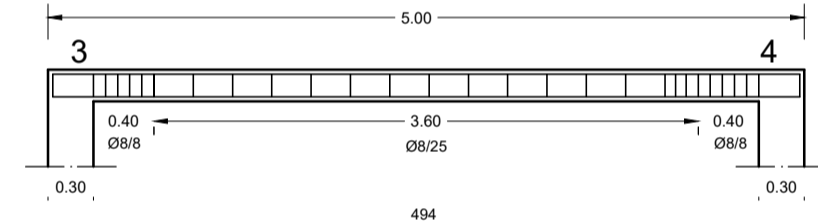
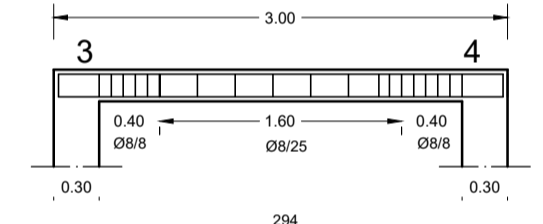
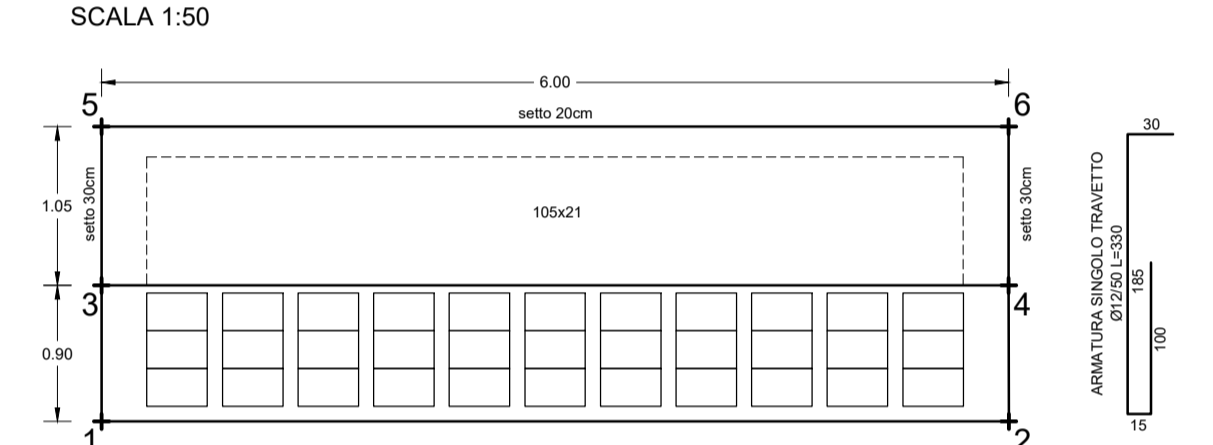
CARPENTERIA COPERTURA
h=16+5cm - quota +3,50m
SCALA 1:50



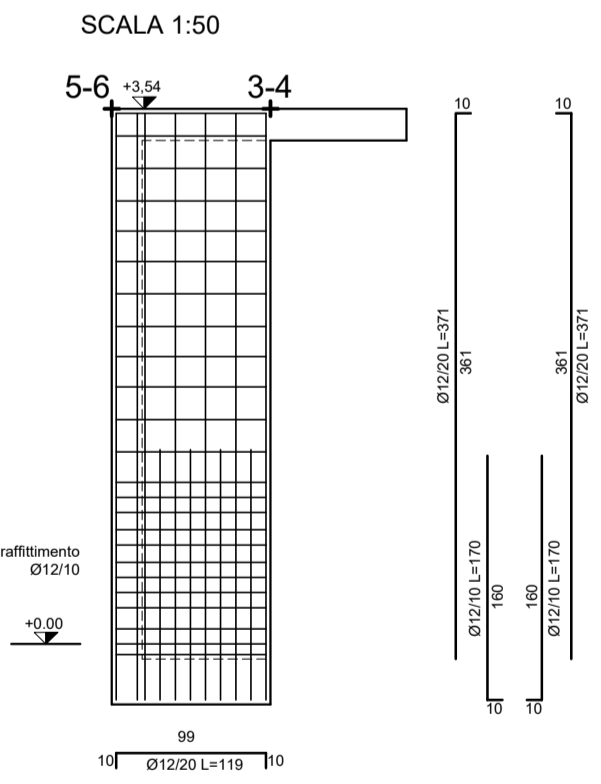
CARPENTERIA COPERTURA
h=16+5cm - quota +3,50m
SCALA 1:50



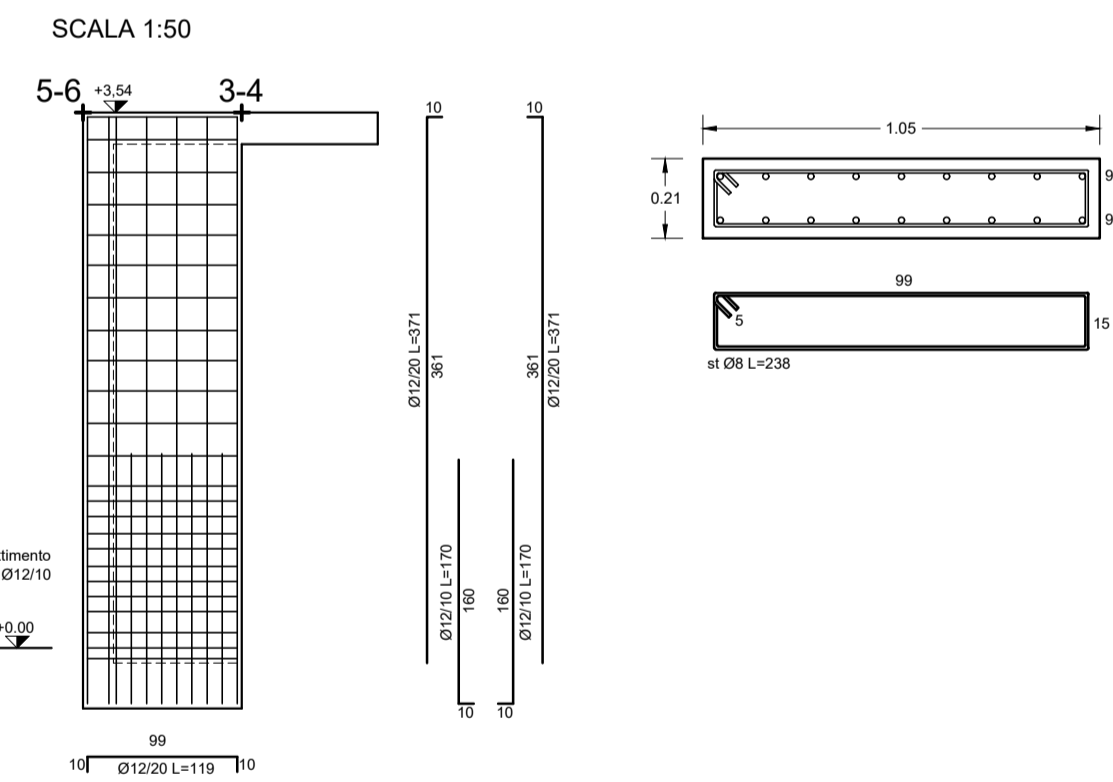
CARPENTERIA COPERTURA
h=16+5cm - quota +3,50m
SCALA 1:50



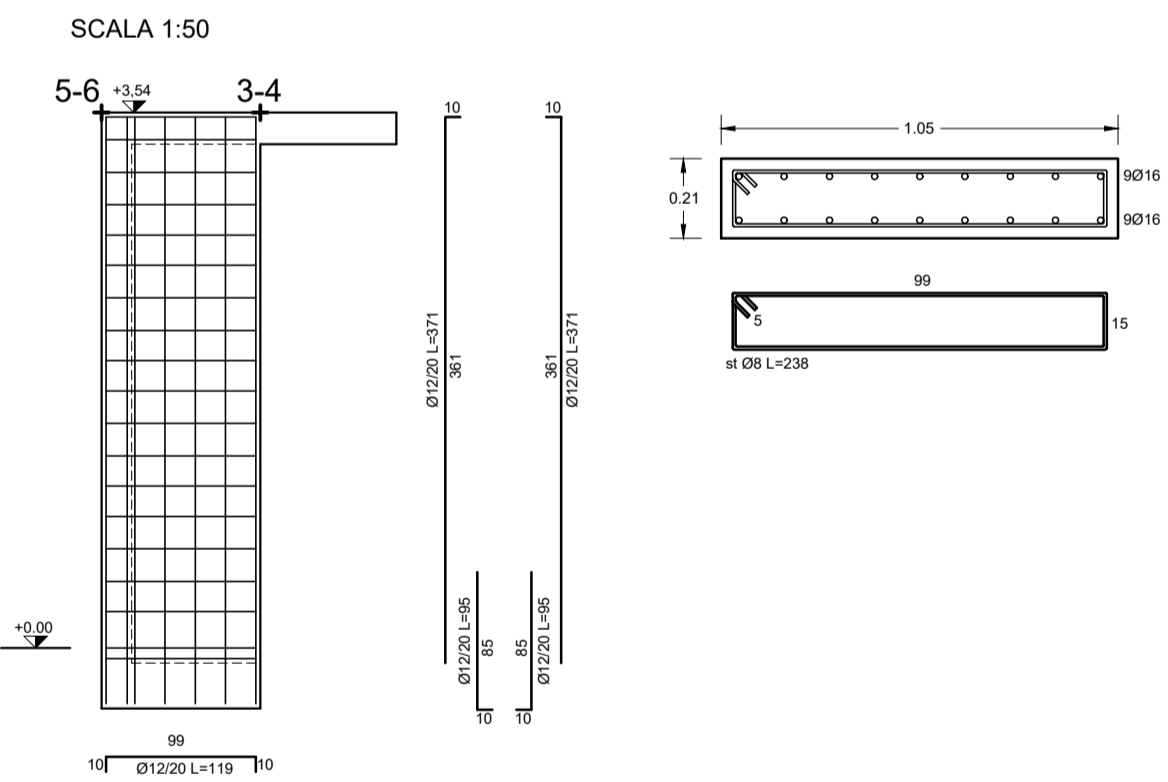
SETTO CORTO
s=30cm
SCALA 1:50



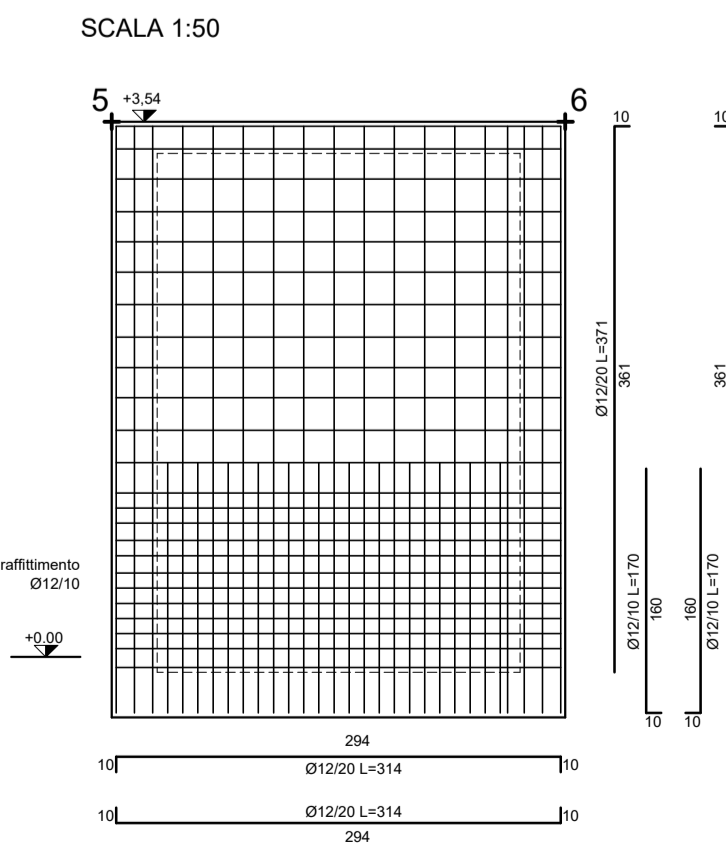
SETTO CORTO
s=30cm
SCALA 1:50



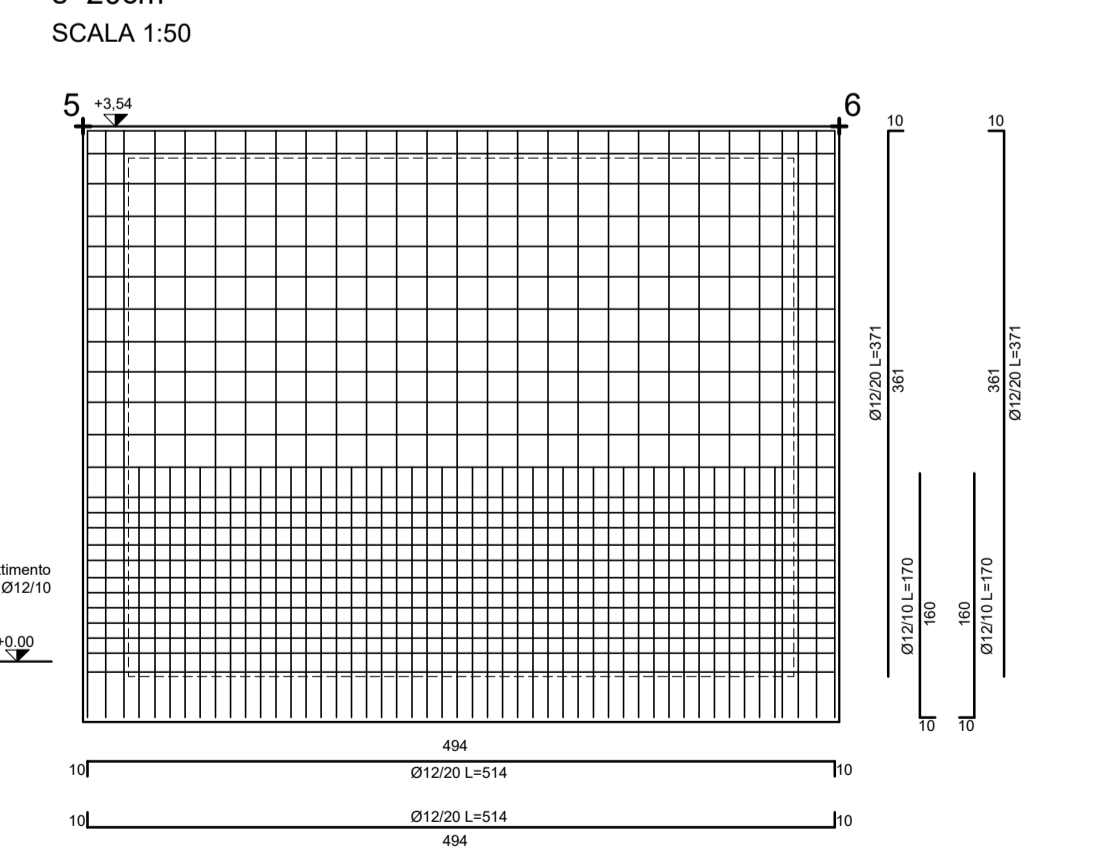
SETTO CORTO
s=30cm
SCALA 1:50



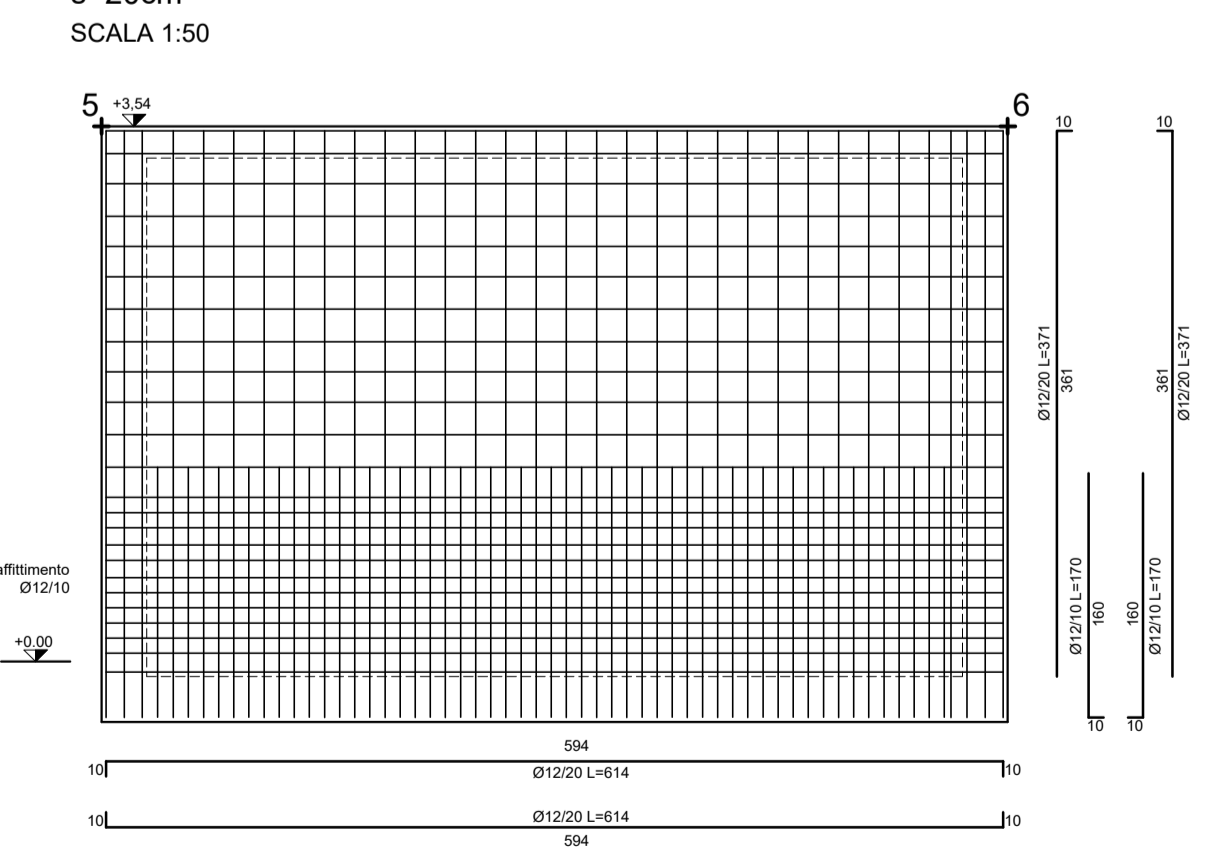
SETTO LUNGO
s=20cm
SCALA 1:50



SETTO LUNGO
s=20cm
SCALA 1:50

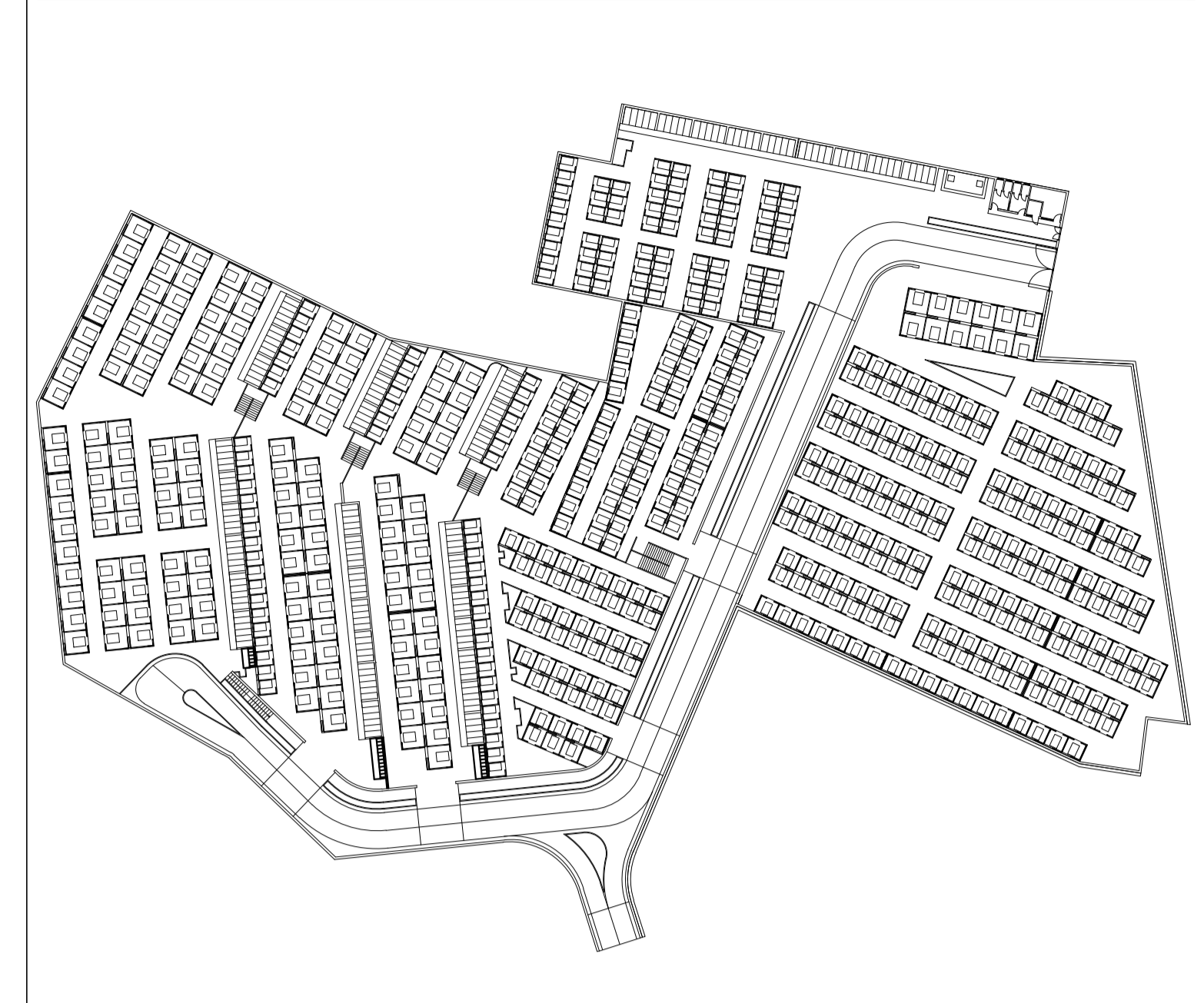


SETTO LUNGO
s=20cm
SCALA 1:50



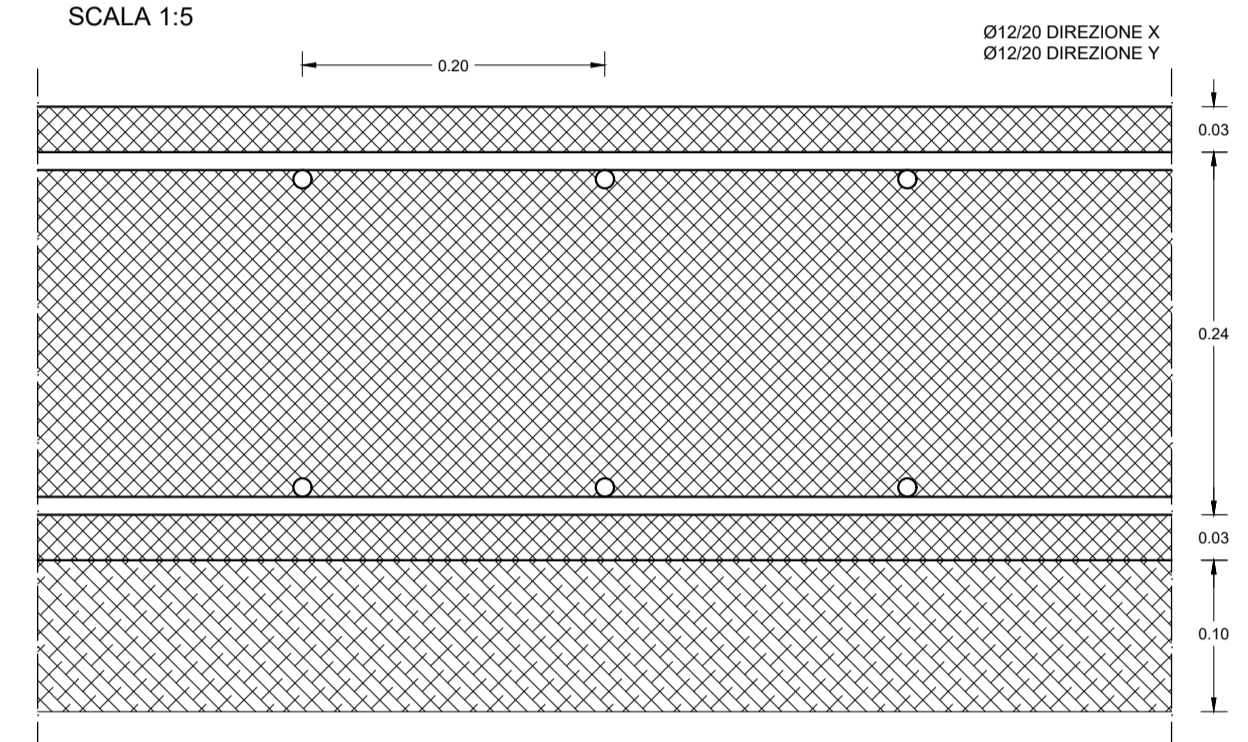
CARATTERISTICHE DEI MATERIALI	PRESCRIZIONI D'OPERA
FONDAZIONI: Plateacalcestruzzo C28/35 acciaio B450C	-Copriferro: 2,5 cm in fondazione ed in elevazione.
ELEVAZIONE: Setti, travi e solaio.....calcestruzzo C28/35 acciaio B450C	-Sovrapposizione armature: 40e

KEYPLAN

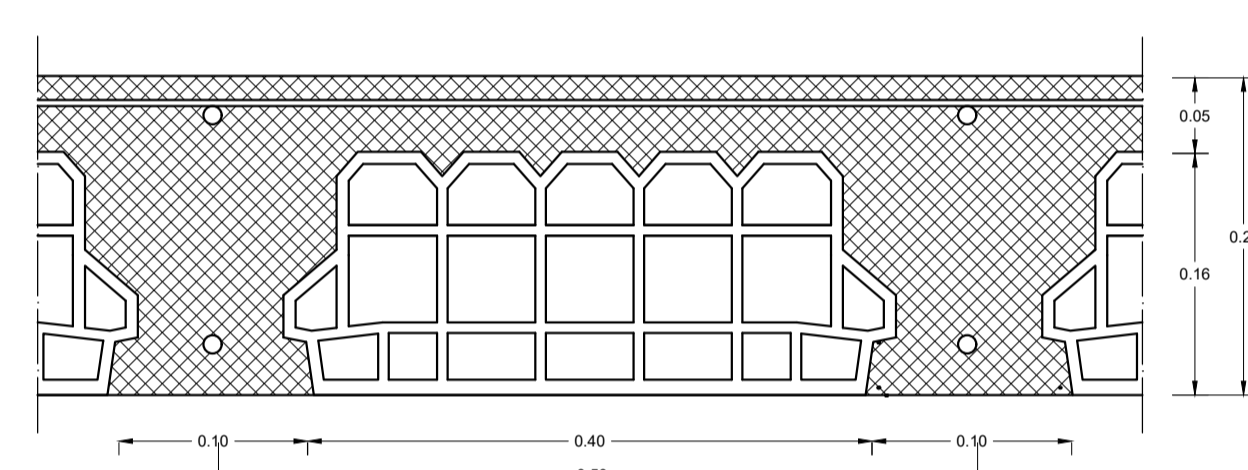


PARTICOLARI COSTRUTTIVI SCALE: 1:5

PARTICOLARE PLATEA 30cm
SCALA 1:5

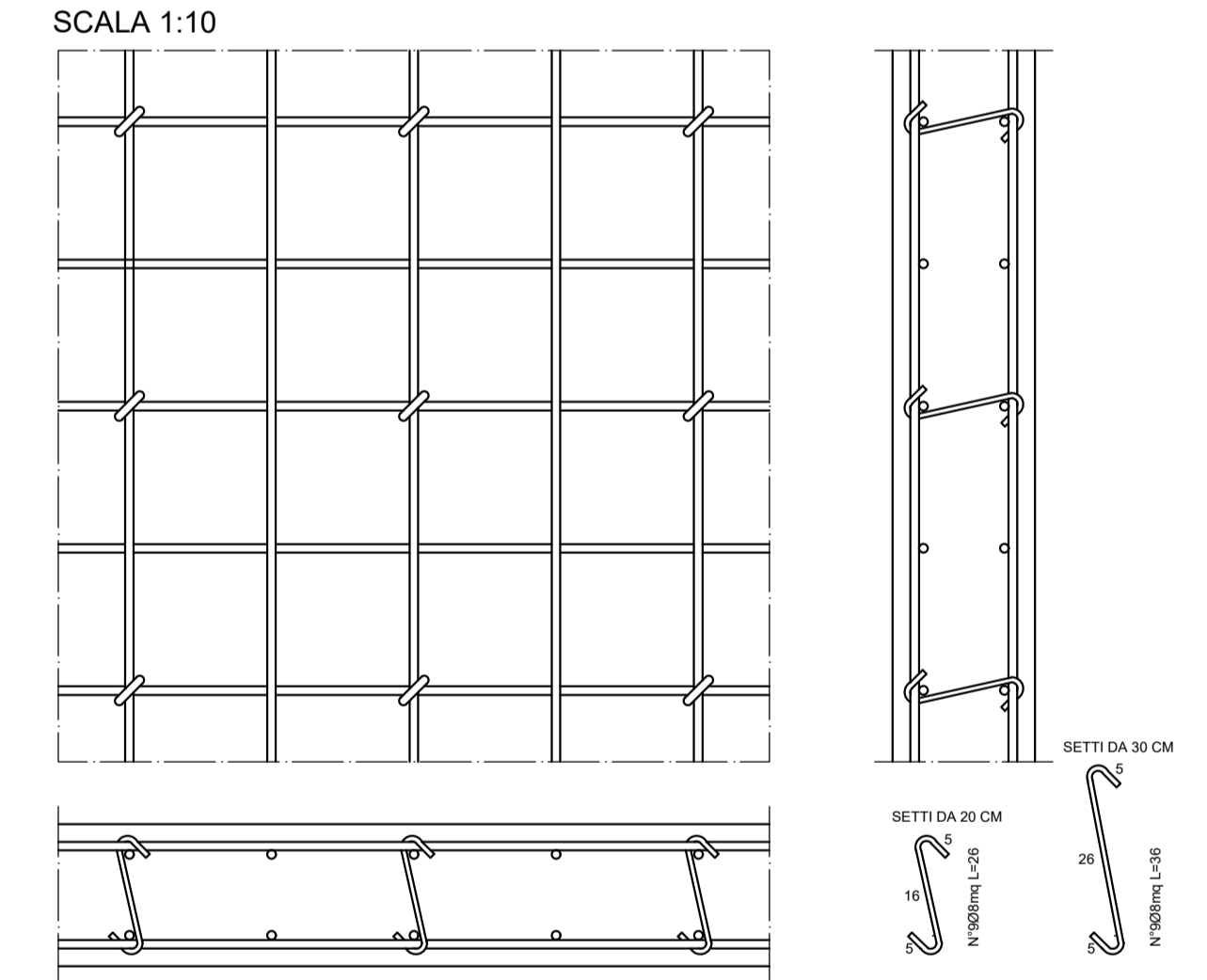


PARTICOLARE SOLAIO CON TRAVETTI IN OPERA
SCALA 1:5



Sezione solaio cm 16+4
Travetti in opera

PARTICOLARE DISPOSIZIONE SPILLI NEI SETTI
N°9 SPILLI AL METRO QUADRO
SCALA 1:10



PROGETTO ESECUTIVO
ai sensi degli articoli da 33 a 43 del D.P.R. 207/2010

IL CONCESSIONARIO

Service
Termini Imerese Srl

Amministratore Unico
Luigi Caputo

Service
Termini Imerese Srl
Amministratore Unico
Luigi Caputo

I PROGETTISTI

PROGECA
ING. DOMENICO PORFIDIA
ING. MARIO PERRI

ING. VINCENZO CAPUTO
Ord. Ing. Caserta n° 3355

ING. DOMENICO PORFIDIA
Ord. Ing. Caserta n° 2652

ING. MARIO PERRI
Ord. Ing. Caserta n° 4326

TAV S.19

ESECUTIVI STRUTTURALI E PARTICOLARI COSTRUTTIVI OSSARIO/CINERARIO

CONTRATTO PER L'AMPLIAMENTO CIMETERO E GESTIONE DEL NUOVO E VECCHIO CIMETERO DEL COMUNE DI TERMINI IMERESE
(Contratto di concessione del 27 Settembre 2012 - Rep. n. 10829 - Racc. n. 31)

COMUNE DI TERMINI IMERESE
Provincia di Palermo

GENNAIO 2019